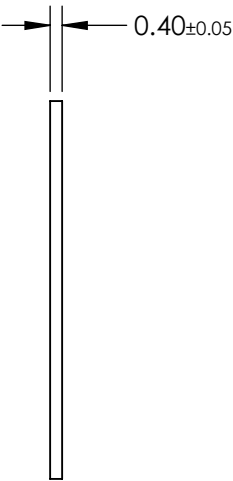
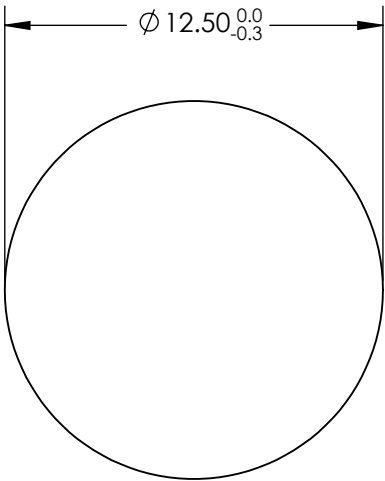
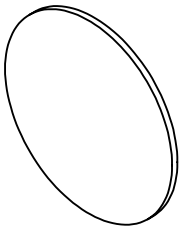


NOTES:

- 1. SUBSTRATE: Polymer Film XP42-40
- 2. WAVELENGTH RANGE: 400 - 700 nm
- 3. POLARIZATION EFFICIENCY (%):
>99.98 (nominal at 555nm)
- 4. TRANSMISSION (%):
SINGLE: 42 ±2
PARALLEL: 36.4
CROSSED: <0.004 (nominal at 555nm)
- 5. EXTINCTION RATIO: 9000:1 (nominal at 555nm)
- 6. ROHS COMPLIANT



**FOR INFORMATION ONLY:
DO NOT MANUFACTURE
PARTS TO THIS DRAWING**

SPECIFICATIONS SUBJECT TO CHANGE WITHOUT NOTICE
DIMENSIONS ARE FOR REFERENCE ONLY

THIRD ANGLE PROJECTION 		 Edmund Optics®	
TITLE		12.5mm Dia. Linear Polarizing Film (XP42-40)	
ALL DIMS IN	mm	DWG NO	SHEET
		29500	10 OF 12