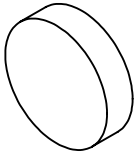


NOTES:

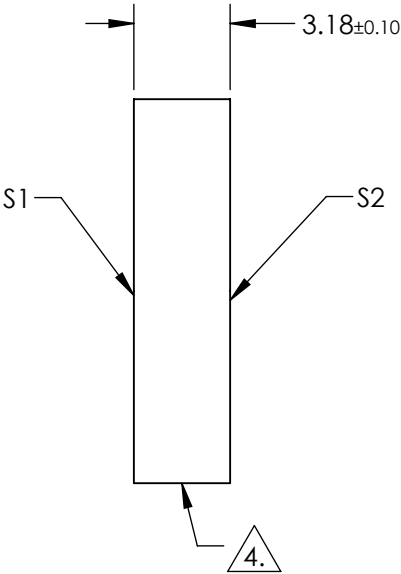
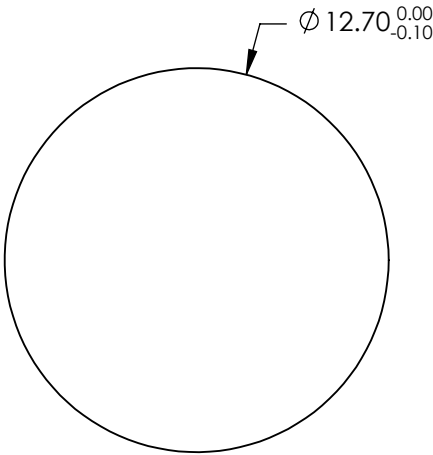
1. SUBSTRATE:
FUSED SILICA
2. SUFRACE S2 TO BE PARALLEL TO S1 TO WITHIN <3 ARCMIN
3. COATING (APPLY ACROSS CLEAR APERTURE)
S1: R(abs): >99% @ 532nm
T(abs): >95% @ 355nm

S2: R(abs): <0.5% @ 355nm
- DAMAGE THRESHOLD,PULSED:
S1: 5 J/cm² @ 532nm, 20ns, 20Hz
2.5 J/cm² @ 355nm, 20ns, 20Hz

S2: 7.5 J/cm² @ 355nm, 20ns, 20Hz


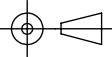


4. FINE GRIND SURFACE
5. ROHS COMPLIANT



**FOR INFORMATION ONLY:
DO NOT MANUFACTURE
PARTS TO THIS DRAWING**

SPECIFICATIONS SUBJECT TO CHANGE WITHOUT NOTICE
DIMENSIONS ARE FOR REFERENCE ONLY

| | S1 | S2 |  Edmund Optics® | | | |
|------------------|---------------------|---------------------|--|----|-------|---|
| SHAPE | PLANO | PLANO |  | | | |
| SURFACE QUALITY | 10 - 5 | COMMERCIAL POLISH | | | | |
| CLEAR APERTURE | Ø 11.43 | N/A | | | | |
| SURFACE FLATNESS | λ/10 | N/A | | | | |
| BEVEL | PROTECTED AS NEEDED | PROTECTED AS NEEDED | | | | |
| | | | ALL DIMS IN | mm | TITLE | 12.7mm Dia., 355nm T, 532nm R 45° Thin Harmonic Separator |
| | | | DWG NO | | | 29046 |
| | | | | | | SHEET 65 OF 86 |