

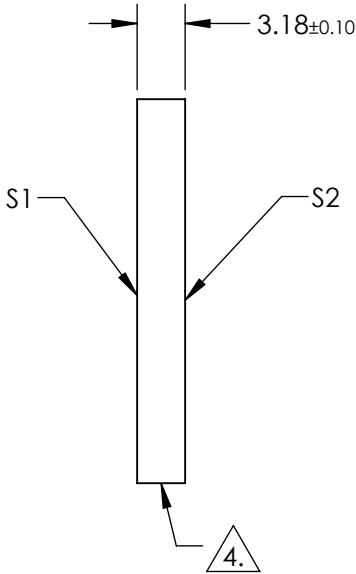
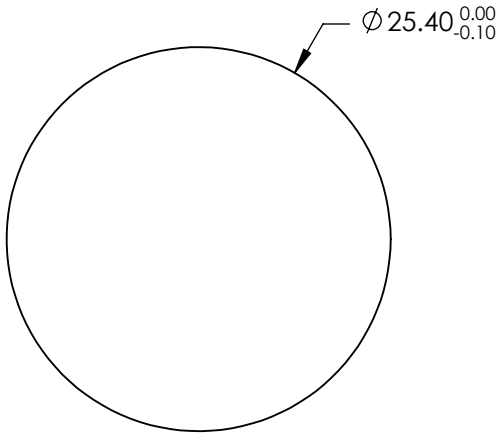
NOTES:

1. SUBSTRATE:  
FUSED SILICA
2. SUFRACE S2 TO BE PARALLEL TO S1 TO WITHIN <3 ARCMIN
3. COATING (APPLY ACROSS CLEAR APERTURE)  
S1: R(abs): >99% @ 532nm  
R(abs): >99% @ 1064nm  
T(abs): >70% @ 266nm
- S2: R(abs): <1.0% @ 266nm

DAMAGE THRESHOLD,PULSED:  
S1: 5 J/cm² @ 532nm, 20ns, 20Hz  
7.5 J/cm² @ 1064nm, 20ns, 20Hz  
2.5 J/cm² @ 355nm, 20ns, 20Hz  
S2: 7.5 J/cm² @ 355nm, 20ns, 20Hz




4. FINE GRIND SURFACE

5. ROHS COMPLIANT



**FOR INFORMATION ONLY:  
DO NOT MANUFACTURE  
PARTS TO THIS DRAWING**

SPECIFICATIONS SUBJECT TO CHANGE WITHOUT NOTICE  
DIMENSIONS ARE FOR REFERENCE ONLY

	S1	S2			 Edmund Optics®			
SHAPE	PLANO	PLANO						
SURFACE QUALITY	10 - 5	COMMERCIAL POLISH						
CLEAR APERTURE	Ø22.86	N/A	THIRD ANGLE PROJECTION		TITLE	25.4mm Dia., 355nm T, 532 & 1064nm R 45° Thin Harmonic Separator		
SURFACE FLATNESS	λ/10	N/A			DWG NO	29053	SHEET 72 OF 86	
BEVEL	PROTECTED AS NEEDED	PROTECTED AS NEEDED	ALL DIMS IN	mm				