

NOTES:

1. SUBSTRATE MATERIAL:  
FUSED SILICA

2. CENTERING BEAM DEVIATION:

S1 & S2 BEAM DEVIATION TO BE <3 ARCMIN  
S4 & S5 BEAM DEVIATION TO BE <3 ARCMIN

3. COATING (APPLY ACROSS CLEAR APERTURE)

S1, S2, S3 & S4: NONE

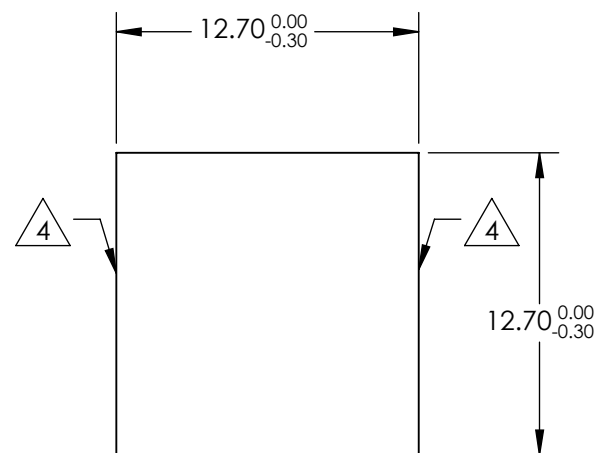
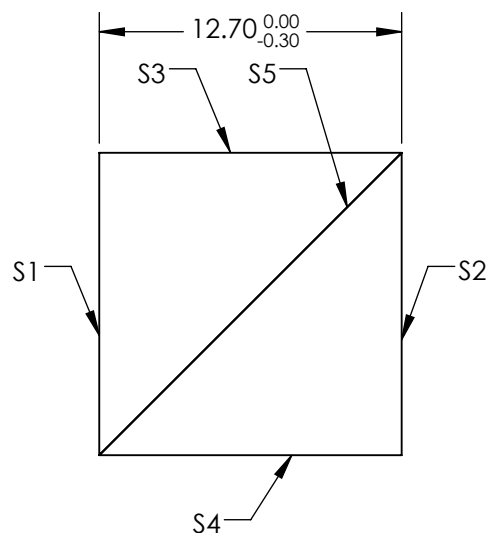
S5: EXTINCTION RATIO:  $T_p/T_s > 1000:1$  @ 1550nm  
TRANSMISSION:  $TP > 97\%$  @ 1550nm

DAMAGE THRESHOLD, PULSED:

TYPICAL: 20 J/cm<sup>2</sup> @ 1064nm 10ns, 20Hz

4. FINE GROUND SURFACE

5. ROHS COMPLIANT

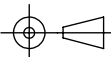


**FOR INFORMATION ONLY:  
DO NOT MANUFACTURE  
PARTS TO THIS DRAWING**

SPECIFICATIONS SUBJECT TO CHANGE WITHOUT NOTICE  
DIMENSIONS ARE FOR REFERENCE ONLY

	VALUE
SURFACE FLATNESS	$\lambda/6$
SURFACE QUALITY	20-10
MIN CLEAR APERTURE	11.43 x 11.43
BEVEL MAX FACE	PROTECTIVE AS NEEDED

THIRD ANGLE  
PROJECTION



ALL DIMS IN

mm

**EO**® Edmund Optics®

TITLE

12.7mm x 1550nm, HIGH ENERGY POLARIZIN  
CUBE BEAMSPLITTER

DWG NO

71029

SHEET  
1 OF 1