

NOTES:

1. SUBSTRATE MATERIAL:
FUSED SILICA

2. CENTERING TOLERANCE (AT 1550nm):

S1 & S2 BEAM DEVIATION TO BE <3 ARCMIN
S4 & S5 BEAM DEVIATION TO BE <3 ARCMIN

3. COATING (APPLY ACROSS CLEAR APERTURE)

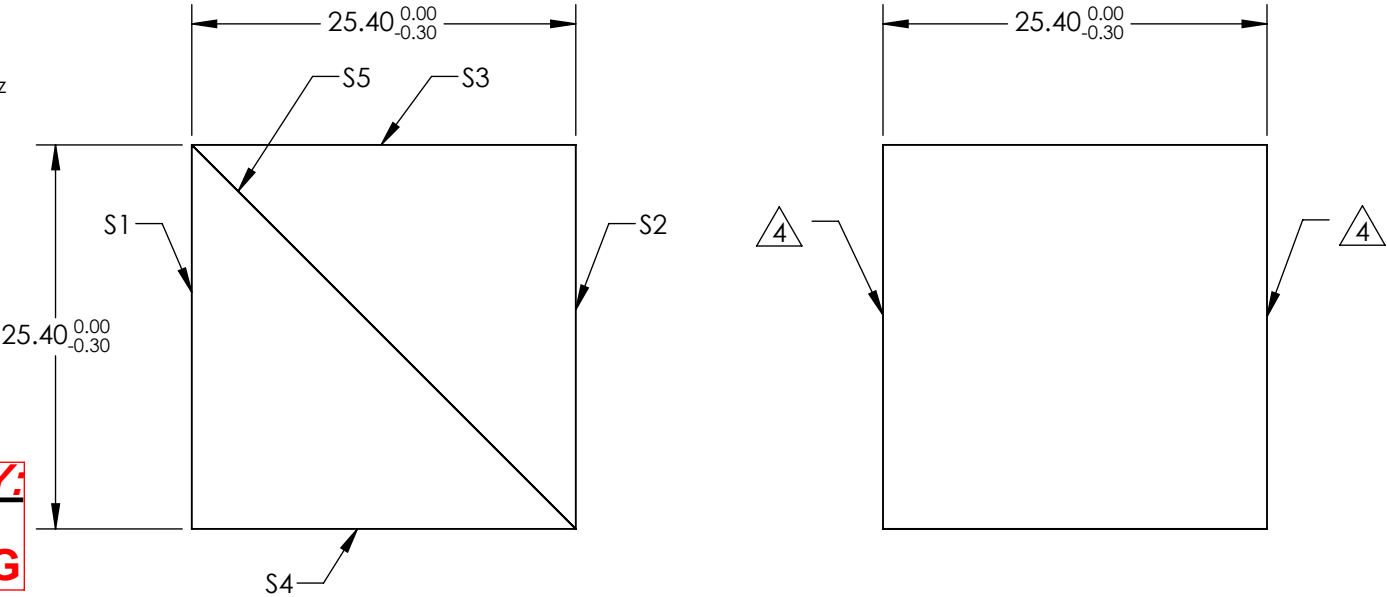
S1, S2, S3 & S4: NONE
S5: EXTINCTION RATIO: TP/TS >1000:1 @ 1550nm
TRANSMISSION: TP >96% @ 1550nm

DAMAGE THRESHOLD, PULSED:
Typical: 20 J/cm2 @ 1064nm 10ns, 20Hz

4 FINE GROUND SURFACE

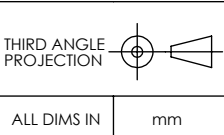
5. RoHS COMPLIANT

**FOR INFORMATION ONLY:
DO NOT MANUFACTURE
PARTS TO THIS DRAWING**



SPECIFICATIONS SUBJECT TO CHANGE WITHOUT NOTICE
DIMENSIONS ARE FOR REFERENCE ONLY

| | VALUE |
|--------------------|----------------------|
| SURFACE FLATNESS | $\lambda/6$ |
| SURFACE QUALITY | 40-20 |
| MIN CLEAR APERTURE | 22.86 x 22.86 |
| BEVEL MAX FACE | PROTECTIVE AS NEEDED |



EO® Edmund Optics®

| | |
|--------|---|
| TITLE | 25.4mm x 1550nm, HIGH ENERGY POLARIZIN CUBE BEAMSPLITTER |
| DWG NO | 71030 |
| SHEET | 1 OF 1 |