

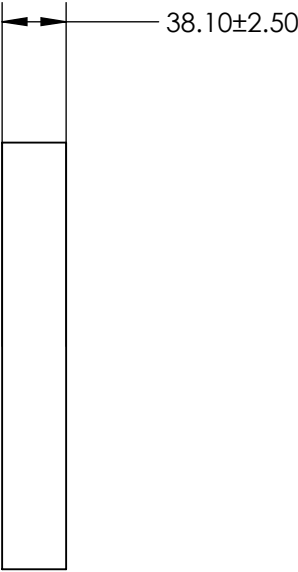
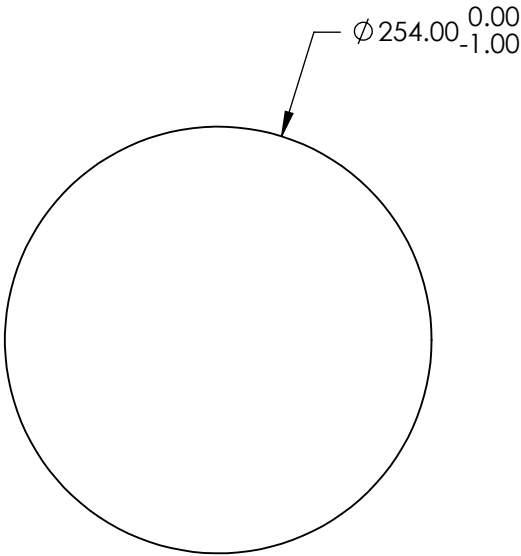
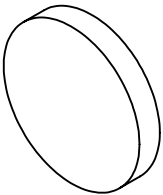
NOTES:

- 1. SUBSTRATE:
ZERODUR®
- 2. SURFACE S2 TO BE PARALLEL WITH SURFACE S1 TO <3 ARCMIN
- 3. COATING (APPLY ACROSS CLEAR APERTURE)
S1: Enhanced Aluminum (450-650nm)
R(avg) >95% @ 450 - 650nm
- S2: NONE

4. ARROW ON EDGE POINTING TOWARD SURFACE S1



5. FINE GRIND SURFACE

6. ROHS COMPLIANT



**FOR INFORMATION ONLY:
DO NOT MANUFACTURE
PARTS TO THIS DRAWING**

SPECIFICATIONS SUBJECT TO CHANGE WITHOUT NOTICE
DIMENSIONS ARE FOR REFERENCE ONLY

| | | | | | | | |
|------------------|----------------------|----------------------|---|-------|--|----------|------------------|
| | S1 | S2 | | |  Edmund Optics® | | |
| SHAPE | PLANO | PLANO | | | | | |
| SURFACE FLATNESS | $\lambda/10$ | N/A |  | TITLE | 10" Dia. Enhanced Aluminum, $\lambda/10$ Flat ZERODUR® | | |
| SURFACE QUALITY | 60-40 | COMMERICAL POLISH | | | | | |
| CLEAR APERTURE | $\varnothing 228.60$ | $\varnothing 228.60$ | | | | | |
| BEVEL | PROTECTED AS NEEDED | PROTECTED AS NEEDED | ALL DIMS IN | mm | DWG NO | 71108533 | SHEET 3 OF 20 |