

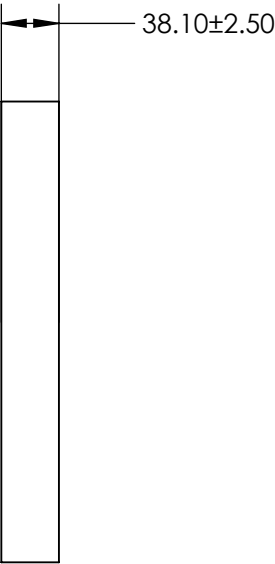
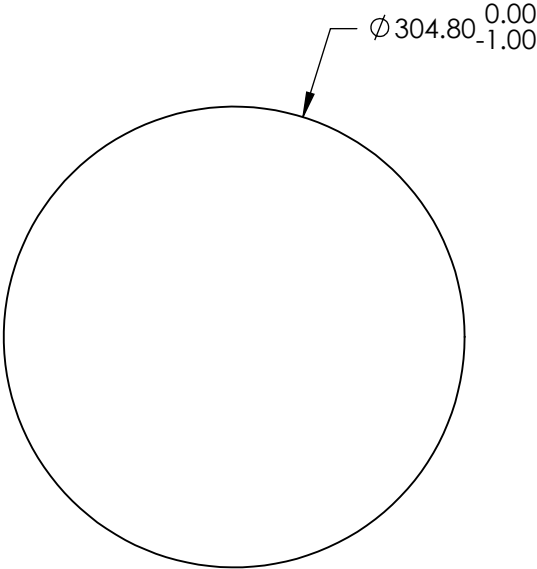
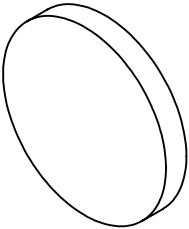
NOTES:

- 1. SUBSTRATE:  
ZERODUR®
- 2. SURFACE S2 TO BE PARALLEL WITH SURFACE S1 TO <3 ARCMIN
- 3. COATING (APPLY ACROSS CLEAR APERTURE)  
S1: Protected Aluminum (400-2000nm)  
R(avg) >85% @ 400 - 700nm  
R(avg) >90% @ 400 - 2000nm  
S2: NONE

4.  ARROW ON EDGE POINTING TOWARD SURFACE S1



5.  FINE GRIND SURFACE

6. ROHS COMPLIANT



**FOR INFORMATION ONLY:  
DO NOT MANUFACTURE  
PARTS TO THIS DRAWING**

SPECIFICATIONS SUBJECT TO CHANGE WITHOUT NOTICE  
DIMENSIONS ARE FOR REFERENCE ONLY

	S1	S2	 Edmund Optics®				
SHAPE	PLANO	PLANO					
SURFACE FLATNESS	λ/10	N/A		TITLE	12" Dia. Protected Aluminum, λ/10 Flat ZERODUR®		
SURFACE QUALITY	60-40	COMMERICAL POLISH					
CLEAR APERTURE	Ø 274.30	Ø 274.30					
BEVEL	PROTECTED AS NEEDED	PROTECTED AS NEEDED	ALL DIMS IN	mm	DWG NO	71109522	SHEET 7 OF 20