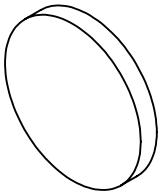
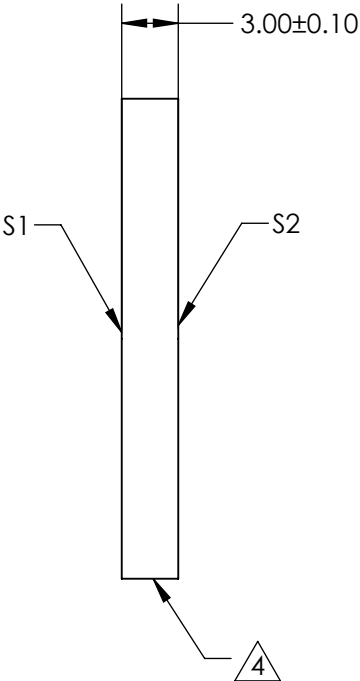
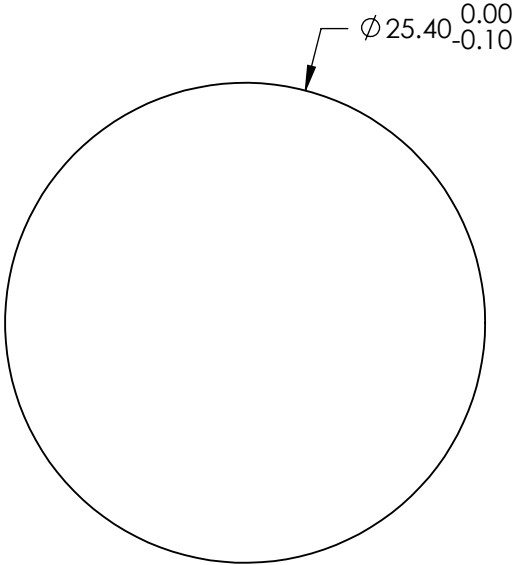


- NOTES:
- 1. SUBSTRATE:
FUSED SILICA (CORNING 7980)
 - 2. S1 TO BE PARALLEL WITH S2 TO WITHIN <1 ARCMIN
 - 3. COATING (APPLY ACROSS CLEAR APERTURE)
S1 & S2: NIR I (600-1050nm)
R(AVG) ≤0.5% @ 600 - 1050nm



4. FINE GRIND SURFACE

5. ROHS COMPLIANT



**FOR INFORMATION ONLY:
DO NOT MANUFACTURE
PARTS TO THIS DRAWING**

SPECIFICATIONS SUBJECT TO CHANGE WITHOUT NOTICE
DIMENSIONS ARE FOR REFERENCE ONLY

| | S1 | S2 |
|-----------------|---------------------|---------------------|
| SHAPE | PLANO | PLANO |
| SURFACE QUALITY | 40 - 20 | 40 - 20 |
| CLEAR APERTURE | Ø 22.86 | Ø 22.86 |
| BEVEL | PROTECTED AS NEEDED | PROTECTED AS NEEDED |



ALL DIMS IN mm

EO® Edmund Optics®

TITLE 25.4mm Dia., 3mm Thick, NIR I Coated, λ/4
Fused Silica Window

DWG NO 72380

SHEET
40 OF 84