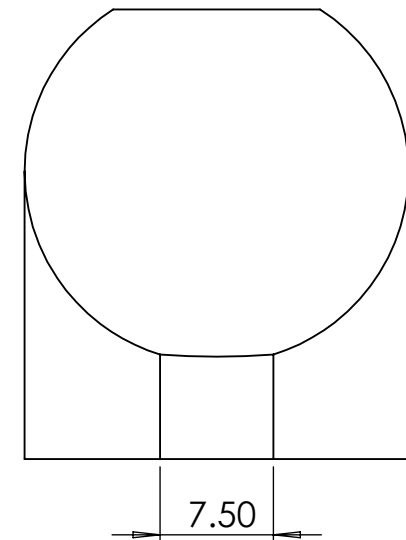
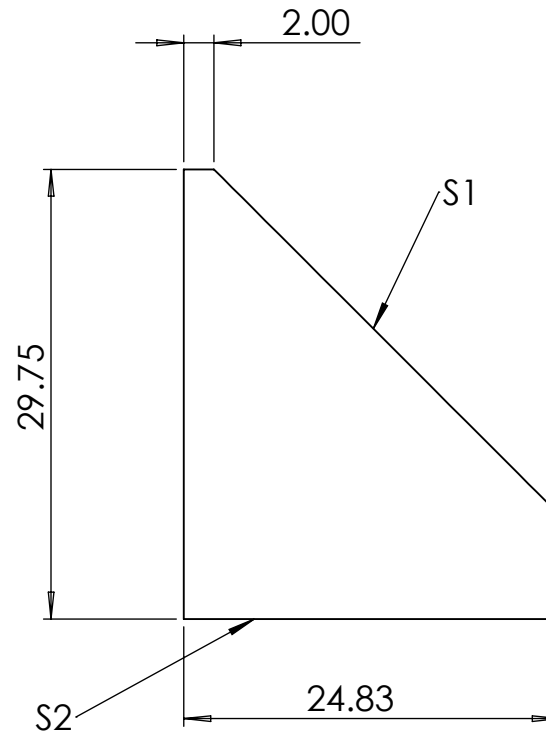
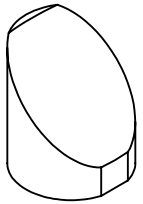


NOTES:

- SUBSTRATE:  
UV FUSED SILICA
- COATING (APPLY ACROSS COATING APERTURE)  
S1: VIS  
R(AVG) > 98% FROM 400-750nm @ 0°-45° AOI FOR ALL POLARIZATIONS  
  
S2: NONE  
  
SURFACE ROUGHNESS:  $< \overset{\pm}{\text{\AA}}$  RMS
- FOCAL LENGTH TOLERANCE: 1%
- ROHS: COMPLIANT



**FOR INFORMATION ONLY:  
DO NOT MANUFACTURE  
PARTS TO THIS DRAWING**


SPECIFICATIONS SUBJECT TO CHANGE WITHOUT NOTICE  
DIMENSIONS ARE FOR REFERENCE ONLY

	S1
SHAPE	PARABOLIC
SURFACE FIGURE AT 632.8NM (RMS)	$\lambda/8$
CLEAR APERTURE	90%
BEVEL	PROTECTED AS NEEDED

THIRD ANGLE  
PROJECTION

ALL DIMS IN

mm

 **Edmund Optics®**

TITLE

25.4 x 50.8mm EFL 90° VIS Coated  
Off-Axis Parabolic Mirror

DWG NO

18672

SHEET

1 OF 1