

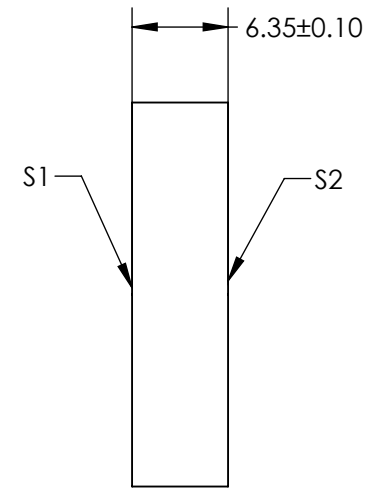
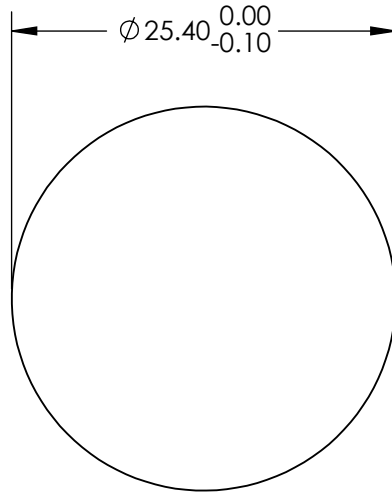
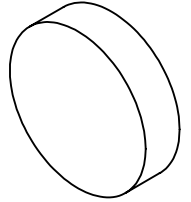
NOTES:

1. SUBSTRATE: OPTICAL GRADE SILICON
2. SURFACE S2 TO BE PARALLEL TO SURFACE S1 TO WITHIN <3 ARCMIN
3. COATING (APPLY ACROSS CLEAR APERTURE)
 - S1: Ultrafast-Enhanced Silver (800-1150nm)
 - Ravg >99% @ 850 - 1150nm, 0° AOI
 - Rs >99% @ 800 - 1150nm, 45° AOI
 - Rp >98.5% @ 850 - 1100nm, 45° AOI
 - GDD: 0 ±30 fs2 @ 800-1100 nm

S2: NONE

4.  FINE GRIND SURFACE

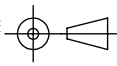
5. ROHS COMPLIANT



**FOR INFORMATION ONLY:
DO NOT MANUFACTURE
PARTS TO THIS DRAWING**

SPECIFICATIONS SUBJECT TO CHANGE WITHOUT NOTICE
DIMENSIONS ARE FOR REFERENCE ONLY

	S1	S2
SHAPE	PLANO	PLANO
SURFACE QUALITY	40 - 20	COMMERCIAL POLISH
SURFACE FLATNESS	$\lambda/10$	N/A
CLEAR APERTURE	22.86	N/A
BEVEL	0.05 - 0.25	0.05 - 0.25

THIRD ANGLE PROJECTION 

ALL DIMS IN mm

 **Edmund Optics®**

TITLE: 800 - 1150nm, 25.4mm Dia. Ultrafast-Enhanced Silver, Silicon, Laser Mirror

DWG NO: 90195

SHEET 8 OF 9