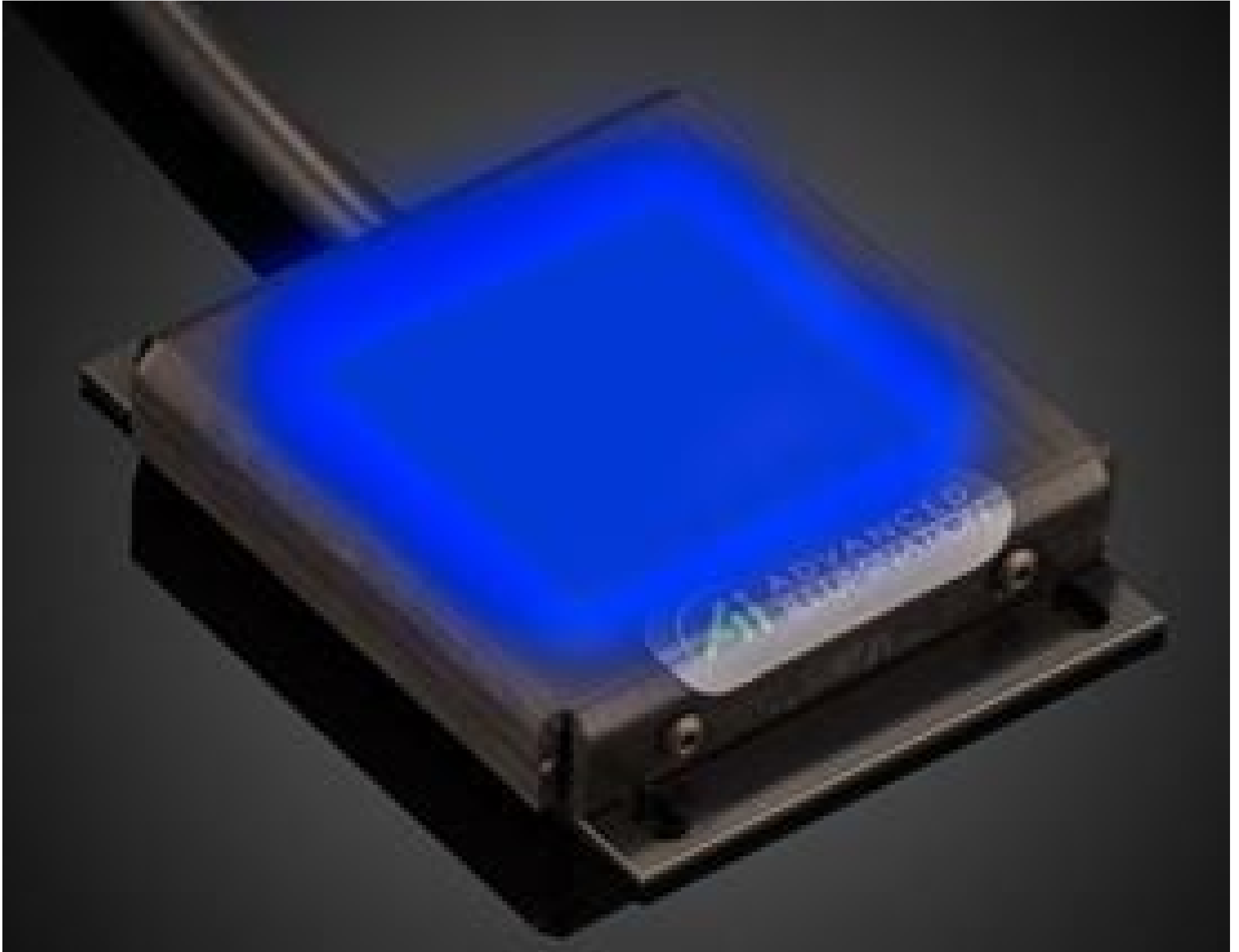


[See all 13 Products in Family](#)

## 100 x 100mm, Blue 455nm, MicroBrite High Intensity Edge-Lit Backlights

See More by [Advanced Illumination](#)



Stock #18-554 **1 In Stock**

⊖ 1 ⊕ €985<sup>00</sup>

**ADD TO CART**

Volume Pricing	
Qty 1+	€985,00 each
Need More?	<a href="#">Request Quote</a>

ⓘ Prices shown are exclusive of VAT/local taxes

### Product Downloads

### General

BT100100-455IC **Model Number:**

50,000 **LED Lifetime (hours):**

LED Illuminator **Type of Illumination:**

**Note:**  
Optional Manual Intensity Adjustment [#86-887](#) and [#89-555](#) are Available

Advanced Illumination	<b>Manufacturer:</b>
Backlight	<b>Geometry:</b>
Constant	<b>Illumination Mode:</b>
<b>Physical &amp; Mechanical Properties</b>	
120.02 x 104.60 x 11.25	<b>Dimensions (mm):</b>
195.04	<b>Weight (g):</b>
3.36 x 3.31	<b>Active Area (inches):</b>
<b>Optical Properties</b>	
Blue	<b>Color:</b>
455	<b>Wavelength (nm):</b>
<b>Hardware &amp; Interface Connectivity</b>	
Flying Leads	<b>Connector:</b>
24V	<b>Input Voltage (V):</b>
<b>Environmental &amp; Durability Factors</b>	
0 - 60	<b>Operating Temperature (°C):</b>
IP50	<b>Environmental Rating:</b>
<b>Regulatory Compliance</b>	
<a href="#">Exempt</a>	<b>RoHS 2015:</b>
<a href="#">View</a>	<b>Certificate of Conformance:</b>
<a href="#">Contains SVHC(s)</a>	<b>Reach 233:</b>

## Product Details

- High Intensity Machine Vision Illuminator
- Edge-to-Edge Uniform, Low Heat Illumination
- Thin, Compact Form Factor
- Optional Manual Intensity Adjustments ([#86-887](#) and [#89-555](#)) Recommended

Advanced Illumination MicroBrite High Intensity Edge-Lit Backlights offer high performance machine vision backlighting in thin, compact housings and outperform higher cost comparable surface mount lights. These bright backlights produce low heat, uniform lighting. To simplify system integration, these thin backlights include a panel mount and are available in the most common machine vision wavelengths. Advanced Illumination MicroBrite High Intensity Edge-Lit Backlights feature ultra-thin profiles and are ideal for applications including edge-detection, part location, hole detection and object gauging.

**Note:** Requires 24V power supply [#66-855](#). Manual Intensity Adjustment [#86-887](#) and [#89-555](#) are recommended and sold separately.