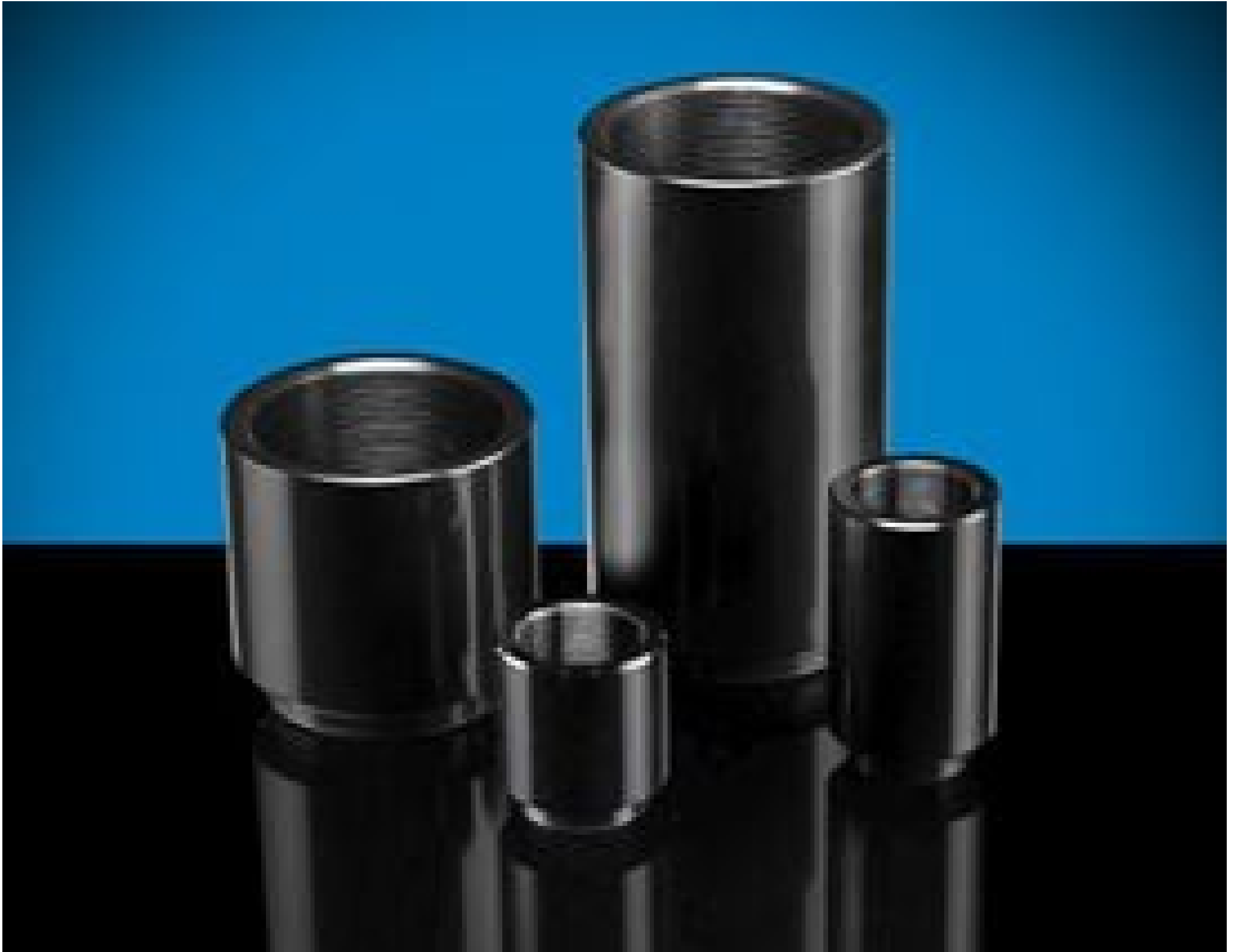


**TECHSPEC® 100mm SM05 Lens Tube**



TECHSPEC® ID Lens Tubes

Stock #35-782 **6 In Stock**

⊖ 1 ⊕ €35<sup>25</sup>

**ADD TO CART**

Volume Pricing	
Qty 1-5	€35,25 each
Qty 6-25	€31,70 each
Qty 26+	€29,30 each
Need More?	<a href="#">Request Quote</a>

**!** Prices shown are exclusive of VAT/local taxes

Product Downloads

**General**

Extension Tube **Type:**

Extension Tube (Fixed) **Function:**

**Physical & Mechanical Properties**

Extension Length (mm):

100.0

Clear Aperture CA (mm):

10.0

Construction:

Anodized Aluminum

Outer Diameter (mm):

16.0

## Threading & Mounting

Thread Type:

0.535 x40 TPI (SM05)

## Regulatory Compliance

RoHS 2015:

[Compliant](#)

Certificate of Conformance:

[View](#)

REACH 241:

[Compliant](#)

## Product Details

- Enables Mounting for 25/25.4mm and 12.5/12.7mm Optics
- Ideal for Optical System Creation and Integration
- Continuous SM1 or SM05 Barrel Thread for Mounting Multiple Components

The TECHSPEC® SMLens Tubes offer an efficient method for mounting single or multiple optical components. Featuring anodized aluminum construction for a light-weight mounting solution, these lens tubes include a barrel thread that extends through the barrel for continuous lens mounting space. The TECHSPEC SMLens Tubes utilize SM1 (1.035" x40 TPI) or SM05 (0.535" x40 TPI) threads and are ideal for integration with [TECHSPEC Plano-Convex](#) and [TECHSPEC Achromatic Lenses](#).

**Note:** Retainer ring sold separately. Spanner wrench [#11-046](#) has a specialized wrench head on one end designed for SMTube System retainer ring adjustment.