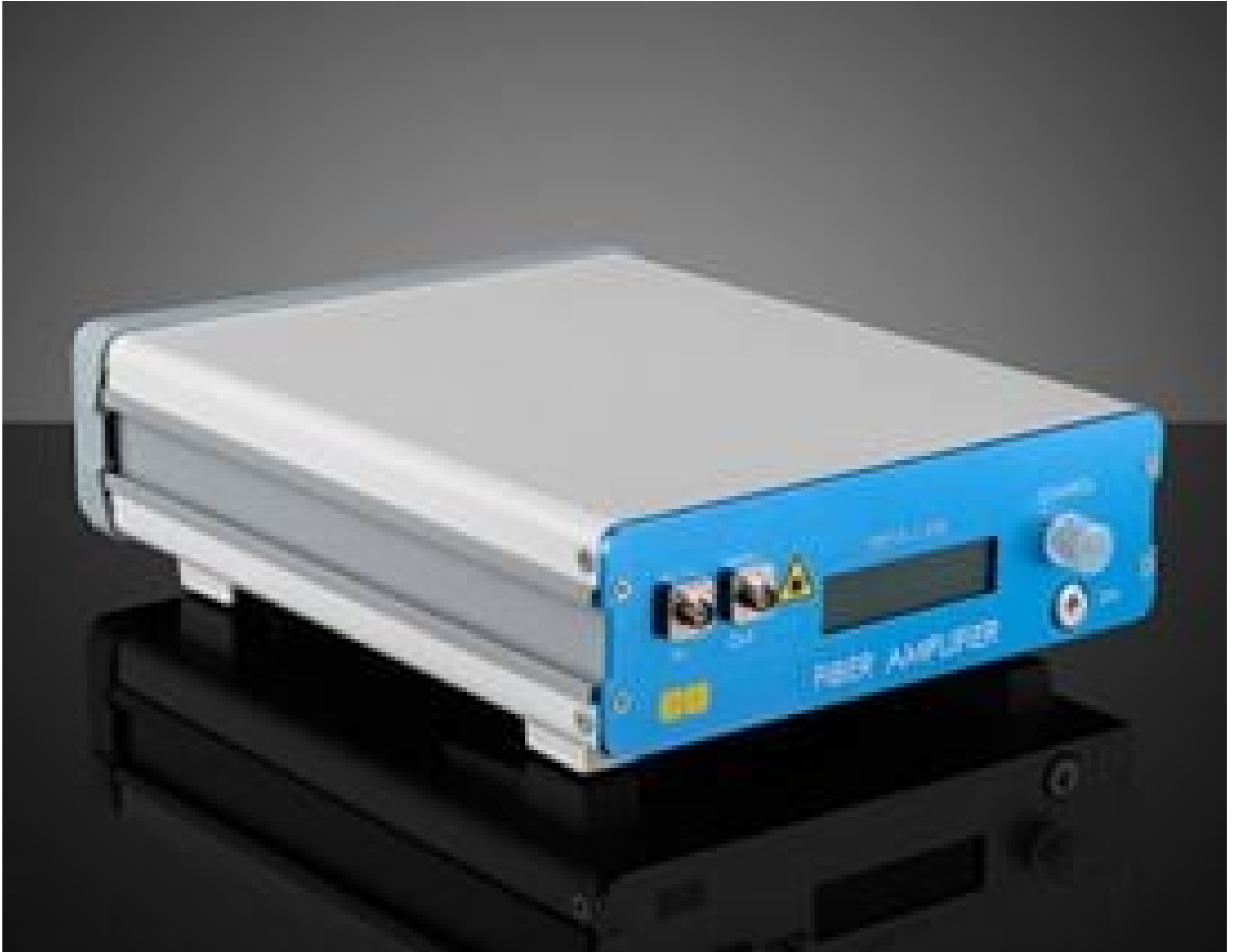


>100mW, SM Fiber, YDFA



Stock #75-539 **NEW** 1 In Stock

⊖ 1 ⊕ €6.230⁰⁰

ADD TO CART

Volume Pricing

Qty 1+	€6.230,00 each
Need More?	Request Quote

ⓘ Prices shown are exclusive of VAT/local taxes

Product Downloads

General

USB Type-A to Type-B Cable

Note:

Physical & Mechanical Properties

11 x 3 x 8 **Dimensions (inches):**

2 lbs **Weight (lbs):**

Optical Properties

1025 - 1075 **Wavelength Range (nm):**

Electrical

Gain (dB):
> 28 dB

Noise Level:
< 8 dB (1064 nm)

Hardware & Interface Connectivity

Connector:
USB Type-B Connector

Power Supply:
IEC Connector

Computer Interface:
USB 2.0 Compatible

Interface:
Optical Encoder with Knob

Regulatory Compliance

Certificate of Conformance:
[View](#)

Product Details

- Erbium (EDFA) or Ytterbium (YDFA) Doped Fiber Amplifier Options
- 1530 - 1565nm or 1025 - 1075nm Wavelength Options
- Manual and Digital (USB) Control

EDFA and YDFA Fiber Amplifiers are turnkey, bench-top Erbium (Er) or Ytterbium (Yb) doped fiber amplifiers operating within wavelength ranges of 1530 - 1565nm or 1025 - 1075nm, respectively. These amplifiers offer high-gain, low-noise amplification optimized for C-band and L-band optical communication systems with an up to >100mW output power. Able to be controlled directly from the front panel or via USB connection allowing for increased flexibility, these amplifiers are available in single mode (SM) or polarization maintaining (PM) configurations. EDFA and YDFA Fiber Amplifiers offer highly functional and intuitive control features enabling users to deploy the amplifier in various environments including research and development and automated manufacturing floors. These amplifiers are ideal for dense wavelength division multiplexing (DWDM), optical sensing, and fiber telecommunications.