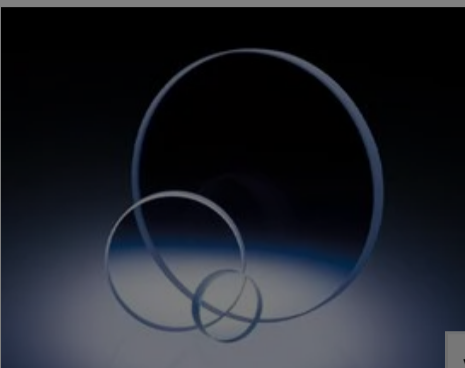


[All Products](#) / [Laser Optics](#) / [Laser Optics](#) / [λ/4 N-BK7 Laser Line Windows](#)

[See all 70 Products in Family](#)

**TECHSPEC® 10mm**

See More by [SCHOTT Optical Components](#)



Stock #49-127 **13 In Stock**

1

€99<sup>.50</sup>

**ADD TO CART**

Volume Pricing	
Qty 1-5	€99,50 each
Qty 6-25	€80,00 each
Qty 26-49	€74,50 each
Need More?	<a href="#">Request Quote</a>

Prices shown are exclusive of VAT/local taxes

Product Downloads

- STEP:step
- Curve:pdf
- PDF Drawing:pdf
- IGES:igs
- Curve (xlsx):xlsx
- eDrawing:eprt
- EO Spec Sheet
- [Download All](#)

General

**Type:** Laser Line Window

**Type of Window:** Glass

Physical & Mechanical Properties

**Clear Aperture CA (mm):** 9.00

**Diameter (mm):** 10.00  
+0.00/-0.25

**Thickness (mm):** 2.00 ±0.20

**Parallelism (arcmin):** ≤1

**Bevel:** Protective as needed

**Clear Aperture (%):** 90

**Edges:** Fine Ground

**Poisson's Ratio:** 0.21

**Young's Modulus (GPa):** 82

**Knoop Hardness (kg/mm<sup>2</sup>):** 610.00

Optical Properties

**Coating:** Laser V-Coat (532nm)

**Design Wavelength DWL (nm):** 532

**Substrate:** [N-BK7](#)

**Index of Refraction (n<sub>d</sub>):** 1.516

**Surface Quality:** 60-40

**Abbe Number (v<sub>d</sub>):** 64.17

**Coating Specification:** R<sub>abs</sub> <0.25% @ 532nm

**Surface Flatness (P-V):** λ/4

Material Properties

Density (g/cm<sup>3</sup>): 2.51

Coefficient of Thermal Expansion CTE (10<sup>-6</sup>/°C): 7.1 (-30 to +70°C)  
8.3 (+20 to +300°C)

## Regulatory Compliance

RoHS 2015: **Compliant**

Reach 235: **Compliant**

Please select your shipping country to view the most accurate inventory information, and to determine the correct Edmund Optics sales office for your order.

**Select Your Country/Region:**

## Need different specs or modifications?

Edmund Optics offers comprehensive custom manufacturing services for optical and imaging components tailored to your specific application requirements. Whether in the prototyping phase or preparing for full-scale production, we provide flexible solutions to meet your needs. Our experienced engineers are here to assist—from concept to completion.

Our capabilities include:

- Custom dimensions, materials, coatings, and more
- High-precision surface quality and flatness
- Tight tolerances and complex geometries
- Scalable production—from prototype to volume

Learn more about our [custom manufacturing capabilities](#) or submit an inquiry [here](#).

## Product Details

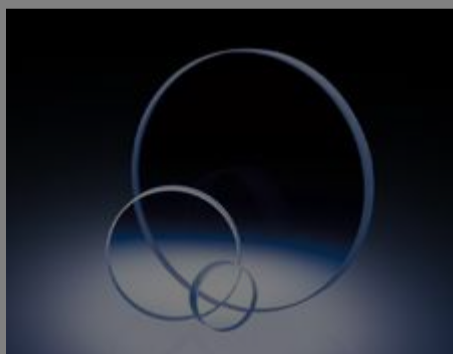
- <0.25% Reflection at Design Wavelength
- Coatings Available for HeNe, Diode, and Nd:YAG Laser Sources
- Precision N-BK7 Substrate
- Also Available **Uncoated**, **MgF<sub>2</sub> Coated** and **VIS 0° Coated**

TECHSPEC® λ/4 N-BK7 Laser Line Windows are ideally suited for industrial and low power laser applications. The high tolerance design yields minimal beam distortion and scatter. Anti-reflection coatings provide <0.25% reflection at the coating's design wavelengths.



## Technical Information

### Frequently Purchased Together



#49-128 - 12.5mm Diameter, 532nm V-Coat, λ/4 N-BK7 Window  
€99,50

Qty 



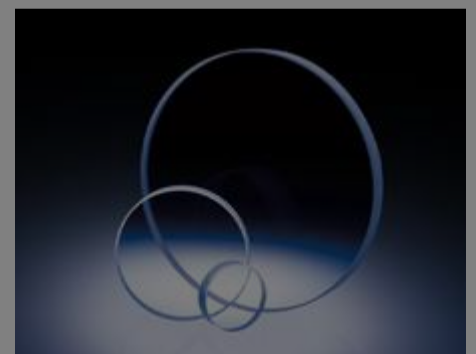
#32-917 - 25mm Dia. x 200mm FL, MgF<sub>2</sub> Coated, Achromatic Doublet Lens  
€122,00

Qty 



#48-720 - 6.0mm Dia. x 24.0mm FL, NIR I Coated, Plano-Convex Lens  
€42,50

















Qty 



#49-125 - 5mm Diameter, 532nm V-Coat, λ/4 N-BK7 Window  
€99,50

Qty 

## Compatible Mounts

	Title	Type	Compare	Stock Number	Price	Buy
<a href="#">MORE+</a>	 10.0mm Optic Dia., Optic Mount				€32,75	20+ In Stock <input type="text" value="1"/> 
<a href="#">MORE+</a>	 5.0 - 25.0mm Optic Height, Metric Bar-Type Optic Holder					20+ In Stock <input type="text" value="1"/> 
<a href="#">MORE+</a>	 7.0 - 40.0mm Optic Height, English Bar-Type Optic Holder	Fixed		#03-676	€106,00 <a href="#">Request Quote</a>	20+ In Stock <input type="text" value="1"/> 
<a href="#">MORE+</a>	 10.0 - 60.0mm Optic Height, Metric Bar-Type Optic Holder	Fixed		#55-530	€108,00 <a href="#">Request Quote</a>	<a href="#">CONTACT US</a> <input type="text" value="1"/> 
<a href="#">MORE+</a>	 7.0 - 67.0mm Optic Height, English Bar-Type Optic Holder	Fixed		#03-669	€116,00 <a href="#">Request Quote</a>	20+ In Stock <input type="text" value="1"/> 
<a href="#">MORE+</a>	 8.0 - 118.0mm Optic Height, English Bar-Type Optic Holder	Fixed		#03-666	€120,00 <a href="#">Request Quote</a>	20+ In Stock <input type="text" value="1"/> 
<a href="#">MORE+</a>	 4.0 - 36.0mm Optic Dia., Self-Centering Jaw Clamp	Fixed		#16-077	€157,00 <a href="#">Request Quote</a>	5 In Stock <input type="text" value="1"/> 
<a href="#">MORE+</a>	 5.0 - 100.0mm Optic Dia., Self-Centering Jaw Clamp	Fixed		#16-078	€410,00 <a href="#">Request Quote</a>	<a href="#">CONTACT US</a> <input type="text" value="1"/> 

Please select your shipping country to view the most accurate inventory information, and to determine the correct Edmund Optics sales office for your order.

**Select Your Country/Region:**

Check out our full selection of mounts [here](#).

# Resources

## Media Type

- Application Note
- Technical Tool
- Published Article
- Glossary
- Video
- FAQ
- Scientific Paper

 APPLICATION NOTE

Anti-Reflection (AR) Coatings

 APPLICATION NOTE

An Introduction to Optical Coatings

 TECHNICAL TOOL

Gaussian Beams Calculator

 APPLICATION NOTE

Understanding Surface Roughness

 APPLICATION NOTE

Common Laser Optics Materials

 APPLICATION NOTE

Importance of Beam Diameter on Laser Damage

[View More](#)

Please select your shipping country to view the most accurate inventory information, and to determine the correct Edmund Optics sales office for your order.

**Select Your Country/Region:**