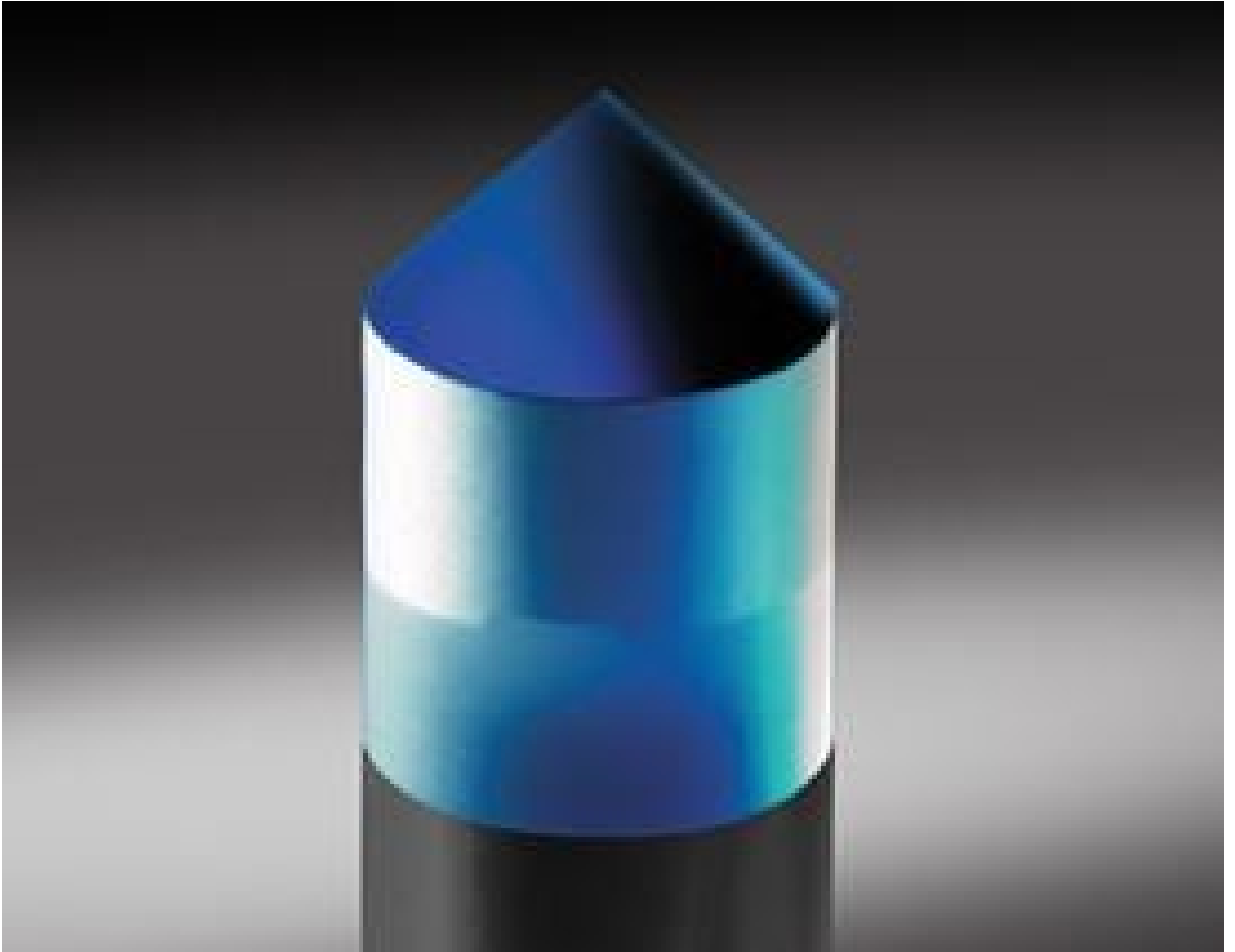


[See all 1 Products in Family](#)

TECHSPEC® 10mm Diameter, Aluminum Coated, Cone Mirror



Stock #45-939 **20+ In Stock**

- 1 + €432.⁰⁰

ADD TO CART

Volume Pricing	
Qty 1-5	€432,00 each
Qty 6-25	€346,00 each
Qty 26-49	€324,00 each
Need More?	Request Quote

ⓘ Prices shown are exclusive of VAT/local taxes

Product Downloads

General

Specialty Mirror **Type:**

Coating on Cone Surface **Note:**

Physical & Mechanical Properties

10.00 +0.00/-0.05 **Diameter (mm):**

10.00	Length (mm):
±0.1	Length Tolerance (mm):
15.0	Total Length (mm):

Optical Properties

±6	Angle Tolerance (arcmin):
Protected Aluminum (400-700nm)	Coating:
R _{avg} > 85% @ 400 - 700nm	Coating Specification:
Metal	Coating Type:
N-BK7	Substrate: <input type="checkbox"/>
40-20	Surface Quality:
400 - 700	Wavelength Range (nm):

Regulatory Compliance

Compliant	RoHS 2015:
Compliant	Reach 219:
View	Certificate of Conformance:

Product Details

- Ideal for 360° Applications
- ±6 Arcmin Apex Angle Tolerance
- Protected Aluminum Coating

TECHSPEC® Cone Mirrors are ideal for laser and imaging systems, and for applications requiring 360° illumination. The mirrors feature a ±6 arcmin apex angle tolerance. The cone mirrors have a polished cone top and base, and a fine ground circumference. TECHSPEC® Cone Mirrors are coated in protected aluminum (400-700nm). These mirrors have a 10mm diameter.

Technical Information

