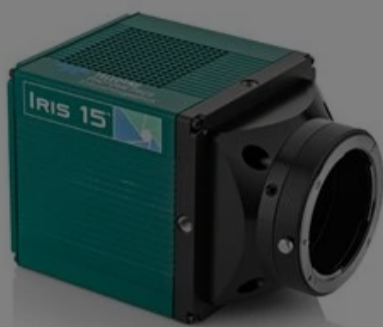


[All Products](#) / [Cameras](#) / [Scientific](#)

[See all 7 Products in Family](#)

Photometrics Iris 15

E-M-16-C



#90-391 Photometrics Iris 15 PCIe Camera



Please select your shipping country to view the most accurate inventory information, and to determine the correct Edmund Optics sales office for your order.

Select Your Country/Region: European Union

Submit

1

€16.500^{,00}

ADD TO CART

Volume Pricing

Qty 1+ €16.500,00 each

Need More? [Request Quote](#)

Prices shown are exclusive of VAT/local taxes

Product Downloads

- Spec Sheets:pdf
- User Manual:pdf [Software](#)
- EO Spec Sheet

Spectrum: Monochrome

General

Type: Monochrome Camera

Model Number: 01-IRIS-15-PCIE-M-16-C

Manufacturer: Teledyne Photometrics

Camera Series: Iris

Note: Includes:
 PCI Express (PCIe) interface card
 PCI Express data cable
 12V/ 5A power supply with international power cord set
 (2) Single-line MMCX trigger cables
 USB memory device containing PVCAM library and drivers
 Quick installation guide

Physical & Mechanical Properties

Dimensions (mm): 78 x 78 x 118

Weight (g): 680

Housing: Full

Optical Properties

Wavelength Range (nm): 400 - 1000

Sensor

Sensor Format: 1.5"

Resolution (Megapixels): 14.90

Frame Rate (fps):	30.00	Pixels (H x V):	5,056 x 2,960
Sensing Area, H x V (mm):	21.49 x 12.58	Imaging Sensor:	GPixel Gsense 5130
Type of Sensor:	Progressive Scan CMOS	<div style="border: 1px solid black; padding: 5px; text-align: center;"> <p>Please select your shipping country to view the most accurate inventory information, and to determine the correct Edmund Optics sales office for your order.</p> <p>Select Your Country/Region:</p> </div>	
Pixel Depth:	16 bit		
Dynamic Range (dB):	78		

Hardware & Interface Connectivity

Connector:	PCIe	Power Supply:	GPIO with #90-400
GPIOs:	1 configurable input, 3 configurable outputs	Synchronization:	Hardware Trigger (GPIO) or Software Trigger
Interface Port Orientation:	Back Panel	GPIO Connector Type:	BNC

Threading & Mounting

Mount:	F-Mount	Mounting Threads:	(1) ¼–20 thread per side
---------------	---------	--------------------------	--------------------------

Environmental & Durability Factors

Operating Temperature (°C):	0 to 30	Storage Temperature (°C):	–20 to 60
------------------------------------	---------	----------------------------------	-----------

Regulatory Compliance

RoHS 2015:	Exempt	Certificate of Conformance:	View
Reach 247:	Contains SVHC(s)		

Product Details

GPixel Gsense 5130

- High Resolution Imaging Even at Low Magnifications
- Small 4.25µm Pixels Across Large Arrays
- Advanced Triggering
- Scientific Cameras for High Sensitivity Microscopy Applications



**Teledyne
Authorized
Distributor**

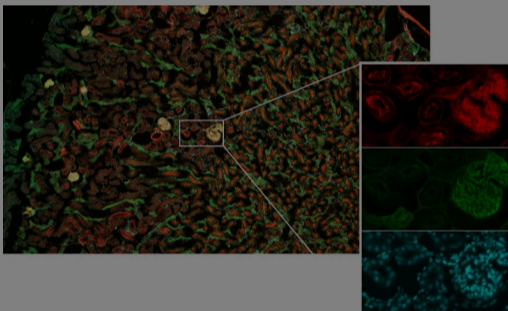
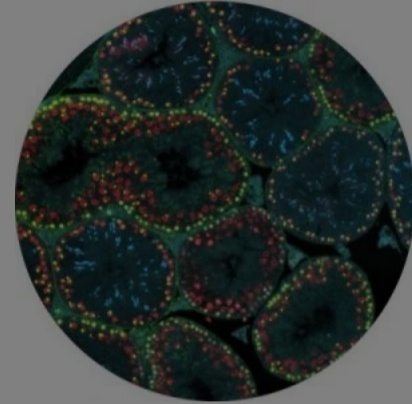
Teledyne Photometrics Iris PCIe Cameras utilize high-resolution sCMOS sensors with 4.25 µm pixels and large sensor formats. This enables precise imaging at low magnifications by maximizing spatial sampling across wide fields of view without sacrificing sensitivity or frame rate. These cameras also feature programmable scan and readout modes that allow precise control of exposure timing and sensor readout direction. Additionally, their advanced triggering capabilities enable seamless synchronization with external devices for high-speed or time-critical imaging applications. Teledyne Photometrics Iris PCIe Cameras are available in C-Mount and F-Mount configurations and are ideal for light-sheet microscopy, live-cell fluorescence, or imaging large samples at high resolutions. These cameras include Teledyne's proprietary-designed software platforms, Beacon and PVCAM, for optimizing camera performance and ease of system integration.

Please select your shipping country to view the most accurate inventory information, and to determine the correct Edmund Optics sales office for your order.

Select Your Country/Region:

High Resolution

The small, 4.25 μm pixels provide highly detailed images across the imaging plane, which allows for the highest resolution when using lower magnification objectives.

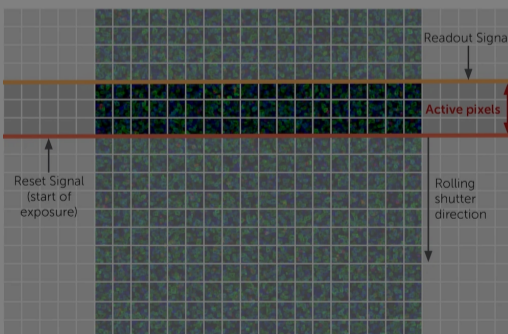
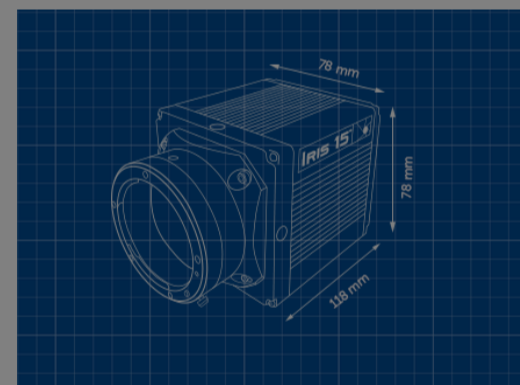


Large Field of View

The larger format 25 mm sensor of the Iris 15 is designed to increase throughput, maximize the amount of data captured and take full advantage of new, larger field of view microscopes.

Compact Form Factor

The Iris 9 (76 x 76 x 88 mm) and Iris 15 (78 x 78 x 108 mm) cameras feature optimized cooling for the size, ideal for integration into new or existing configurations.

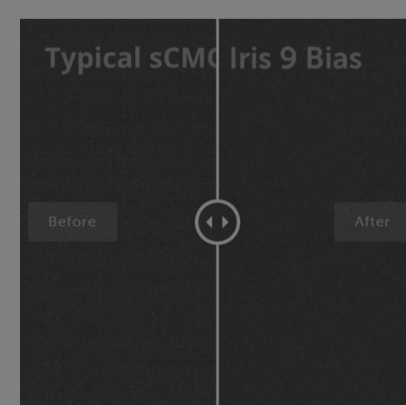


Advanced Triggering

Programmable Scan Mode provides increased control over the rolling shutter exposure and read-out functionality of CMOS sensors by providing access to the sensor timing settings to allow optimization around applications that require control over the line time.

Superior Background Quality

The Iris Family feature Pattern Noise Reduction Technology and Correlated Noise Reduction Technology to ensure that they deliver clean, pattern-free images with minimal pixel defects, delivering improved image quality in low light conditions.



Accessories

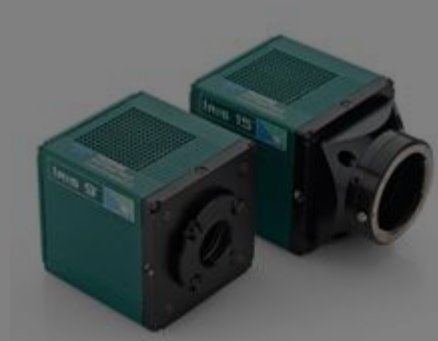
Note: Compatible accessories for in... r products, please contact us [here](#).

Please select your shipping country to view the most accurate inventory information, and to determine the correct Edmund Optics sales office for your order.

Select Your Country/Region:

	Title			Buy
MORE+	Iris PCIe Accessory Kit	#90-396 NEW	Request Quote	1 In Stock <input type="text" value="1"/>
MORE+	Iris PCIe Interface Card	#90-397 NEW	€775,00 Request Quote	2 In Stock <input type="text" value="1"/>
MORE+	Iris PCIe Cable, 3m	#90-398 NEW	€330,00 Request Quote	2 In Stock <input type="text" value="1"/>
MORE+	Power Supply Kit for Iris Scientific Cameras	#90-400 NEW	€220,00 Request Quote	2 In Stock <input type="text" value="1"/>
MORE+	1m Length, BNC to MMCX Cable	#90-404 NEW	€50,00 Request Quote	1 In Stock <input type="text" value="1"/>

Related Products



Teledyne Photometrics Iris USB 3.0 Cameras



LF Series Fixed Focal Length Lenses



Microscopy



Microscopy Lighting