

[All Products](#) / [Imaging Lenses](#) / [F-Mount Lenses](#) / [Wide Angle Large Format F-Mount Lenses](#)

[See all 3 Products in Family](#)

24mm FL Wide Angle Large Format F-Mount Lens



Wide Angle Large Format F-Mount Lens

Please select your shipping country to view the most accurate inventory information, and to determine the correct Edmund Optics sales office for your order.

Select Your Country/Region: European Union

Submit

1

€1.260^{,00}

ADD TO CART

Volume Pricing	
Qty	€1.260,00
1+	each
Need More?	Request Quote

Prices shown are exclusive of VAT/local taxes

Product Downloads

Spec Sheets:pdf

EO Spec Sheet [Download All](#)

General

Product Family: Wide Angle Large Format F-Mount Lenses

Type: Fixed Focal Length Lens

Physical & Mechanical Properties

Iris Option: Variable

Length (mm): 95.00

Maximum Diameter (mm): 83

Outer Diameter (mm): 83

Weight (g): 565

Optical Properties

Horizontal Field of View, 35mm Sensor: 84.1°

Horizontal Field of View, APS-C Sensor: 61.8°

Maximum Image Circle (mm): 43.30

Focal Length FL (mm): 24.00

Working Distance (mm): 110 - ∞

Aperture (f/#): f/1.4 - f/22

Distortion (%): <4

Maximum Distortion (%): <4

Lens Wavelength Range: VIS

Sensor

Maximum Sensor Format: 35mm (43.3mm Image Circle)

Threading & Mounting

Filter Thread: M77 x 0.75

Mount: F-Mount

Regulatory Compliance

Certificate of Conformance: [View](#)

Please select your shipping country to view the most accurate inventory information, and to determine the correct Edmund Optics sales office for your order.

Select Your Country/Region:

Product Details

- Up to 43.3mm Diagonal (35mm Full Frame) Large Format Sensor
- Wide Angles and Large Fields of View
- Lockable Manual Focus and Iris
- 8mm to 24mm Focal Length

Wide Angle Large Format F-Mount Lenses are designed with ultra large fields of view for mid and large format sensors and are ideal for applications requiring short focal lengths. The 8mm focal length lens is designed for creating a fisheye image on APS-C (27.9mm diagonal) sensors, enabling large objects to be in focus throughout the field of view with limited refocusing. Both the 14mm and 24mm focal length lenses are designed for 35mm (43.3mm diagonal) large format sensors. The 14mm lens is versatile with superb image quality even at its full f/2.8 aperture, while the 24mm lens features a fast f/1.4 aperture. Wide Angle Large Format F-Mount Lenses have multi-layer AR coatings to minimize flare and ghosting to ensure excellent image quality and contrast. Each lens features a lockable manual focus and iris.

Related Products



#85-199 - 28mm Short Working Distance, LF Series Fixed Focal Length Lens
€1.965,00

Qty



#85-200 - 28mm Long Working Distance, LF Series Fixed Focal Length Lens
€1.965,00

Qty

Frequently Purchased Together



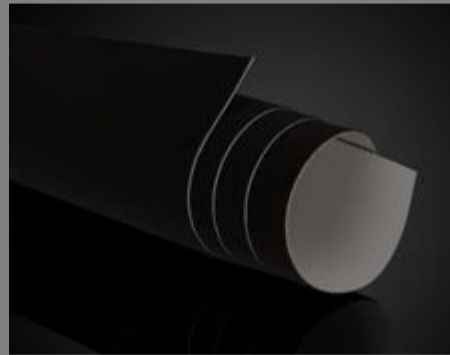
#03-655 - Sliding 2" x 3" Base Plate
€25,25

Qty



#54-580 - #40, 27" x 36", 25 Sheets, Non-Adhesive Flock Paper
€188,00

Qty



#54-586 - #55, 20" x 30", 25 Sheets, Adhesive Flock Paper
€270,00

Qty



#85-200 - 28mm Long Working Distance, LF Series Fixed Focal Length Lens
€1.965,00

Qty

Resources

Media Type

- Application Note
- Video

APPLICATION NOTE

Anti-Reflection (AR) Coatings

APPLICATION NOTE

An Introduction to Optical Coatings

VIDEO

Wavelength and f#

Published Article

FAQ

Glossary

Technical Tool

Please select your shipping country to view the most accurate inventory information, and to determine the correct Edmund Optics sales office for your order.

Select Your Country/Region:

and Field
of View

Transfer
Function

WEBINARS

Choosing the
Right Machine
Vision Lens

[View More](#)