

[All Products](#) / [Optics](#) / [Optical Mirrors](#) / [Yb:YAG Laser Line Mirrors](#)

[See all 76 Products in Family](#)

**TECHSPEC® 25.4 x 25.4 mm**



TECHSPEC® Yb:YAG Laser Line Mirrors

Please select your shipping country to view the most accurate inventory information, and to determine the correct Edmund Optics sales office for your order.

Select Your Country/Region: European Union

Submit

1

€179<sup>00</sup>

ADD TO CART

| Volume Pricing |                               |
|----------------|-------------------------------|
| Qty 1-5        | €179,00 each                  |
| Qty 6-25       | €162,00 each                  |
| Qty 26-49      | €144,00 each                  |
| Need More?     | <a href="#">Request Quote</a> |

Prices shown are exclusive of VAT/local taxes

Product Downloads

- STEP:step
- Curve:pdf
- PDF Drawing:pdf
- IGES:igs
- eDrawing:eprt
- EO Spec Sheet
- [Download All](#)

General

Type: Laser Mirror

Physical & Mechanical Properties

Parallelism (arcmin): <3

Clear Aperture (%): 85

Back Surface: Commercial Polish

Dimensions (mm): 25.4 x 25.4 +0.00/-0.10

Thickness (mm): 6.35 ±0.20

Optical Properties

Surface Quality: 10-5

Reflection at DWL (%): 99.8

Coating Specification: R<sub>abs</sub> >99.8% @ 515nm  
R<sub>avg</sub> >99.5% @ 509 - 520nm

Wavelength Range (nm): 509 - 520

Surface Flatness (P-V): λ/10

Coating Type: Dielectric

Coating: Laser Mirror (509-520nm)

Design Wavelength DWL (nm): 515

Angle of Incidence (°): 45

Substrate: [Fused Silica](#) (Corning 7980)

Damage Threshold, By Design: 15 J/cm<sup>2</sup> @ 515nm, 20ns, 20Hz

Regulatory Compliance

Please select your shipping country to view the most accurate inventory information, and to determine the correct Edmund Optics sales office for your order.

**Select Your Country/Region:**

## Need different specifications?

Edmund Optics offers comprehensive custom manufacturing capabilities for a wide range of applications and requirements. Whether in the prototyping phase or preparing for full-scale production, we provide flexible solutions to meet your needs. Our experienced engineers are here to assist—from concept to completion.

Our capabilities include:

- Custom dimensions, materials, coatings, and more
- High-precision surface quality and flatness
- Tight tolerances and complex geometries
- Scalable production—from prototype to volume

Learn more about our [custom manufacturing capabilities](#) or submit an inquiry [here](#).

## Product Details

- >99.8% Reflectivity at Yb:YAG Harmonic Frequencies
- Guaranteed High Laser Damage Thresholds
- 10-5 Surface Quality for Reduced Scatter in Laser Applications
- **TECHSPEC® Laser Mirror Substrates** and **TECHSPEC® Nd:YAG Laser Line Mirrors** Also Available

TECHSPEC® Yb:YAG Laser Line Mirrors are designed to meet the demanding requirements of Ytterbium doped fiber (Yb:doped fiber) and thin-disk laser systems. These mirrors feature laser grade substrates with  $\lambda/10$  surface flatness and 10-5 surface quality to minimize scattering effects. The durable dielectric coatings are designed for high reflectivity at their design wavelengths as well as high damage thresholds at both continuous wave and pulsed laser operating conditions. TECHSPEC Yb:YAG Laser Line Mirrors are ideal for laser applications that include laser ablation, welding, drilling, cutting, and sintering. Dielectric Yb:YAG mirror coatings for applications which require 343nm, 515nm, and 1030nm are available.

**Note:** Contact us for customizable wavelengths, sizes, and varying AOI versions.

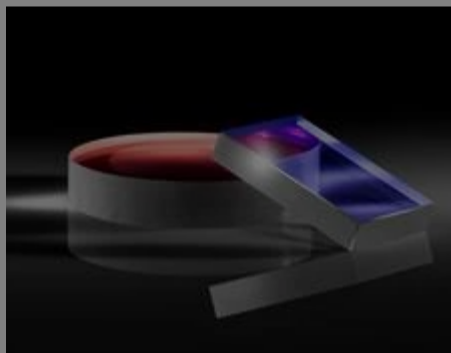
## Related Products



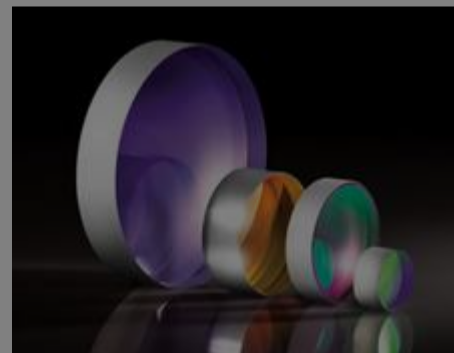
Kinematic Optical Mirror Mounts



Kinematic Square Optical Mounts



Laser Mirror Substrates



Nd:YAG Laser Line Mirrors

## Compatible Mounts

|                       | Title                                   | Type                  | Compare | Stock Number | Price                                    | Buy   |
|-----------------------|---|-----------------------|---------|--------------|--|---|
| <a href="#">MORE+</a> | 1.5" Reverse Angle Mirror Mount         | Adjustable - Tip-Tilt |         | #37-922      | €86,00<br><a href="#">Request Quote</a>  | 12 In Stock <input type="text" value="1"/>  |
| <a href="#">MORE+</a> | 25/25.4mm Sq. Kinematic Mount, 2 Screws | Adjustable - Tip-Tilt |         | #58-857      | €104,00<br><a href="#">Request Quote</a> | 20+ In Stock <input type="text" value="1"/> |
| <a href="#">MORE+</a> | 25/25.4mm Sq. Kinematic Mount, 3 Screws | Adjustable - Tip-Tilt |         | #58-860      | €114,00<br><a href="#">Request Quote</a> | 16 In Stock <input type="text" value="1"/>  |
| <a href="#">MORE+</a> | 60mm sq - Rectangular Bar Clamp         | Fixed                 |         | #54-995      | €126,00<br><a href="#">Request Quote</a> | 20+ In Stock <input type="text" value="1"/> |
| <a href="#">MORE+</a> | 3.0" Angle Mirror Mount                 | Adjustable - Tip-Tilt |         | #36-481      | €250,00<br><a href="#">Request Quote</a> | 20+ In Stock <input type="text" value="1"/> |

Please select your shipping country to view the most accurate inventory information, and to determine the correct Edmund Optics sales office for your order.

**Select Your Country/Region:**

**Media Type**

- Application Note
- Technical Tool
- Trending in Optics
- Video
- Published Article
- FAQ
- Glossary
- Scientific Paper

**APPLICATION NOTE**

An Introduction to Optical Coatings

**TECHNICAL TOOL**

Gaussian Beams Calculator

**APPLICATION NOTE**

Effects of Laser Mirror Surface Flatness

**TRENDING IN OPTICS**

High Reflectivity Mirrors for Laser...

**WEBINARS**

High Reflectivity Mirrors for Laser...

**APPLICATION NOTE**

Highly Reflective Coatings

[View More](#)