

[All Products](#) / [Optics](#) / [Optical Lenses](#) / [Zinc Selenide \(ZnSe\) Aspheric Lenses](#)

[See all 16 Products in Family](#)

**TECHSPEC®**

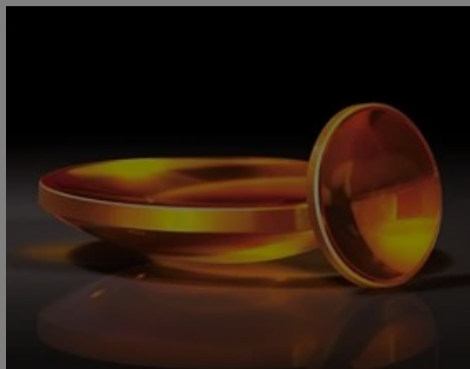
# 25.4mm Dia. x 1.83mm Thick Aspheric Lens

See More by [Coherent®](#)

Please select your shipping country to view the most accurate inventory information, and to determine the correct Edmund Optics sales office for your order.

Select Your Country/Region: European Union

Submit



TECHSPEC Zinc Selenide (ZnSe) Aspheric Lenses

Stock #39-510 **7 In Stock** [Other Coating Options](#)

- 1 +

€1.345<sup>,00</sup>

ADD TO CART

### Volume Pricing

Qty 1-10	each	€1.345,00
Qty 11-25	each	€1.215,00
Qty 26-49	each	€1.145,00
Need More?		<a href="#">Request Quote</a>

Prices shown are exclusive of VAT/local taxes

### Product Downloads

- STEP:step
- Curve:pdf
- PDF Drawing:pdf
- IGES:igs
- Zemax:zar
- eDrawing:eprt
- Code V:seq
- EO Spec Sheet
- [Download All](#)

## General

Type: Aspheric Lens

## Physical & Mechanical Properties

<b>Diameter (mm):</b>	25.40 +0.00/-0.10	<b>Centering (arcmin):</b>	≤3
<b>Centering, ETD (µm):</b>	≤12.7	<b>Clear Aperture CA (mm):</b>	22.86
<b>Edge Thickness ET (mm):</b>	1.83	<b>Center Thickness CT (mm):</b>	6.00 ±0.10
<b>Bevel:</b>	Protective as needed	<b>Shape of Back Surface:</b>	Plano
<b>Surface Roughness (Å):</b>	<50 RMS		

## Optical Properties

<b>Effective Focal Length EFL (mm):</b>	12.70	<b>Numerical Aperture NA:</b>	1.00
<b>Back Focal Length BFL (mm):</b>	10.21	<b>Substrate:</b>	Coherent® Infrared ZnSe
<b>Asphere Figure Error, RMS @ 632.8nm:</b>	λ/2	<b>Coating:</b>	BBAR (8000-12000nm)
<b>Coating Specification:</b>	R <sub>avg</sub> <0.5% @ 8 - 12µm	<b>Surface Quality:</b>	40-20

<b>f/#:</b>	0.5	<b>Index of Refraction (n<sub>d</sub>):</b>	2.631
<b>Wavelength Range (nm):</b>	8000 - 12000	<b>Conjugate:</b>	Infinite
<b>Power (P-V) @ 632.8nm:</b>	λ/10	<div style="border: 1px solid black; padding: 5px; text-align: center;"> <p>Please select your shipping country to view the most accurate inventory information, and to determine the correct Edmund Optics sales office for your order.</p> <p><b>Select Your Country/Region:</b></p> </div>	
<b>Electrical</b>			
<b>Power (P-V) @ 10.6μm:</b>	λ/10		
<b>Material Properties</b>			
<b>Coefficient of Thermal Expansion CTE (10<sup>-6</sup>/°C):</b>	7.57		
<b>Regulatory Compliance</b>			
<b>RoHS 2015:</b>	<b>Compliant</b>	<b>Reach 224:</b>	<b>Compliant</b>
<b>Certificate of Conformance:</b>	<b>View</b>		

## Need different specs or modifications?

Edmund Optics offers comprehensive custom manufacturing services for optical and imaging components tailored to your specific application requirements. Whether in the prototyping phase or preparing for full-scale production, we provide flexible solutions to meet your needs. Our experienced engineers are here to assist—from concept to completion.

Our capabilities include:

- Custom dimensions, materials, coatings, and more
- High-precision surface quality and flatness
- Tight tolerances and complex geometries
- Scalable production—from prototype to volume

Learn more about our [custom manufacturing capabilities](#) or submit an inquiry [here](#).

## Product Details

- Edmund Optics Designed, Coherent® Manufactured
- Premier Grade ZnSe Material
- Uncoated or Broadband 8-12μm AR Coating Available

TECHSPEC® Zinc Selenide (ZnSe) Aspheric Lenses are designed to provide diffraction-limited focusing performance for 10.6μm CO<sub>2</sub> lasers. Manufactured from Coherent® Infrared ZnSe material featuring <math>0.0005\text{ cm}^{-1}</math> bulk absorption at 10.6μm, these lenses are available uncoated or with a broadband anti-reflection coating providing superior transmission from 8 - 12μm. The precision designs are ideal for integration into laser systems, thermal imaging assemblies, and FTIR devices. TECHSPEC Zinc Selenide Aspheric Lenses feature an irregularity of <math>< \lambda/20</math> at 10.6μm, 40-20 surface quality, and <math>< 50\text{Å}</math> surface roughness.

**Notes:** II-VI Incorporated is now Coherent Corp.

Special care should be taken when handling Zinc Selenide as it is a toxic material. Always wear rubber or plastic gloves to avoid risk of contamination.

## Technical Information

## Special Handling

These optics require special handling to avoid damage and ensure long-term performance. Proper handling, cleaning, and storage are essential to maintain optical quality. Explore our [Optics Cleaning Resources](#) for step-by-step guides and best practices. For personalized assistance, [Email us](#) or [Chat](#) with our technical support team.

Please select your shipping country to view the most accurate inventory information, and to determine the correct Edmund Optics sales office for your order.

**Select Your Country/Region:**

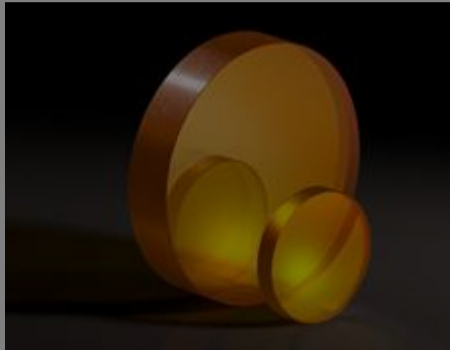


**Component Handling Tools**

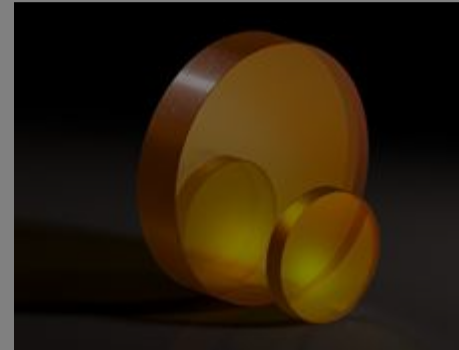
## Related Products



Coherent® CO<sub>2</sub> Beam Expanders



Zinc Selenide (ZnSe) Windows



Zinc Selenide (ZnSe) Optics

## Frequently Purchased Together



#43-834 - 25mm Dia. x 10mm FL Protected Gold, Concave Mirror  
€66,50

Qty



#45-730 - 20 x 20mm Protected Gold, λ/4 Mirror  
€92,50

Qty



#53-983 - 9" x 16.75" Cloths, (150 Count) Pop-n-Wipe Cleaning Cloths  
€70,50

Qty














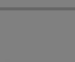
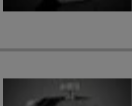
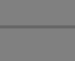


#57-098 - 0.9mW 635nm, Micro LDM Laser Diode  
€143,00

Qty

## Compatible Mounts

	Title	Type	Compare	Stock Number	Price	Buy
<a href="#">MORE+</a>	25.0/25.4mm Optic Dia., SM1 Thin Mount, M4	Fixed		#13-787	€21,00 <a href="#">Request Quote</a>	8 In Stock <input type="text" value="1"/>
<a href="#">MORE+</a>	25.0/25.4mm Optic Dia., SM1 Thin Mount, 8-32	Fixed		#13-788	€21,00 <a href="#">Request Quote</a>	20+ In Stock <input type="text" value="1"/>
<a href="#">MORE+</a>	25.4mm Optic Dia., 10mm Max Optic Thickness, Optic Mount	Fixed		#64-561	€32,75 <a href="#">Request Quote</a>	20+ In Stock <input type="text" value="1"/>
<a href="#">MORE+</a>	25.4mm Optic Dia., 13mm Max Optic Thickness, Optic Mount	Fixed		#64-562	€32,75 <a href="#">Request Quote</a>	20+ In Stock <input type="text" value="1"/>
<a href="#">MORE+</a>	25mm Thick Inner Single Optic Mount	Fixed		#38-758	€41,00 <a href="#">Request Quote</a>	7 In Stock <input type="text" value="1"/>

	Title	Type	Compare	Stock Number	Price	Buy
<a href="#">MORE+</a>	 25.4mm Inner Single Optic Mount				€41,00	20+ In Stock <input type="text" value="1"/> 
<a href="#">MORE+</a>	 25.0/25.4mm Optic Dia., Direct Mount					15 In Stock <input type="text" value="1"/> 
<a href="#">MORE+</a>	 25.0/25.4mm Optic Dia., Side Flange Direct Mount	Fixed		#36-414	€71,00 <a href="#">Request Quote</a>	20+ In Stock <input type="text" value="1"/> 
<a href="#">MORE+</a>	 25/25.4mm Diameter, C-Mount Thin Optic Mount	Fixed		#56-353	€99,00 <a href="#">Request Quote</a>	20+ In Stock <input type="text" value="1"/> 
<a href="#">MORE+</a>	 25.0/25.4mm Optic Dia., L-Slot and Rotation Direct Mount	Adjustable - Rotary		#36-411	€102,00 <a href="#">Request Quote</a>	5 In Stock <input type="text" value="1"/> 
<a href="#">MORE+</a>	 25.0/25.4mm Optic Dia., X-Y Translating Optic Mount	Adjustable - Linear (XY)		#62-956	€276,00 <a href="#">Request Quote</a>	2 In Stock <input type="text" value="1"/> 
<a href="#">MORE+</a>	 25.0/25.4mm Optic Dia., X-Y-Z Translating Optic Mount	Adjustable - Linear (XYZ)		#62-959	€540,00 <a href="#">Request Quote</a>	6 In Stock <input type="text" value="1"/> 
<a href="#">MORE+</a>	 25.0/25.4mm Optic Dia., 5 Axes Optical Mount	Adjustable - Linear (XYZ) & Tip-Tilt		#13-776	€755,00 <a href="#">Request Quote</a>	2 In Stock <input type="text" value="1"/> 

Please select your shipping country to view the most accurate inventory information, and to determine the correct Edmund Optics sales office for your order.

**Select Your Country/Region:**

Check out our full selection of mounts [here](#).

# Resources

## Media Type

- Application Note
- Scientific Paper
- Video
- Glossary
- FAQ
- Trending in Optics
- Published Article

**APPLICATION NOTE**

### Anti-Reflection (AR) Coatings

**APPLICATION NOTE**

### An Introduction to Optical Coatings

**APPLICATION NOTE**

### Lens Geometry Performance Comparison

**CASE STUDIES**

### Laser Optics for Eye Surgery

**APPLICATION NOTE**

### All About Aspheric Lenses

**WEBINARS**

### Design Considerations for Custom Aspheres

[View More](#)

Please select your shipping country to view the most accurate inventory information, and to determine the correct Edmund Optics sales office for your order.

**Select Your Country/Region:**