

[All Products](#) / [Optics](#) / [Optical Lenses](#) / [UV and IR Plano-Convex \(PCX\) Lenses](#)

[See all 133 Products in Family](#)

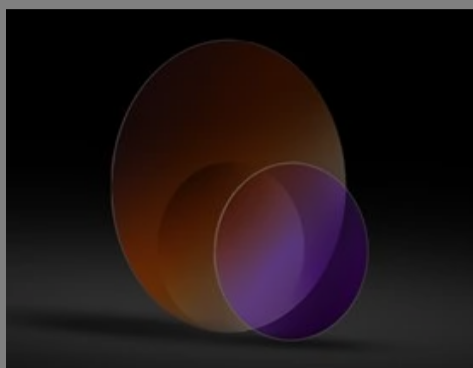
**TECHSPEC®**

# 25.4mm Diameter Thin PCX Lens

Please select your shipping country to view the most accurate inventory information, and to determine the correct Edmund Optics sales office for your order.

Select Your Country/Region: European Union

Submit



Stock #11-664 **17 In Stock** [Other Coating Options](#)

- 1 +

€151<sup>00</sup>

ADD TO CART

Volume Pricing	
Qty 1-5	€151,00 each
Qty 6-25	€133,00 each
Qty 26-49	€120,80 each
Need More?	<a href="#">Request Quote</a>

Prices shown are exclusive of VAT/local taxes

### Product Downloads

- STEP:step
- Curve:pdf
- PDF Drawing:pdf
- IGES:igs
- Zemax:zar
- eDrawing:eprt
- Code V:seq
- EO Spec Sheet
- [Download All](#)

## General

**Type:** Plano-Convex Lens

## Physical & Mechanical Properties

**Diameter (mm):** 25.40  
+0.00/-0.10

**Centering (arcmin):** <3

**Center Thickness CT (mm):** 1.60 ±0.10

**Edge Thickness ET (mm):** 1.16

**Clear Aperture CA (mm):** 22.86

**Bevel:** Protective as needed

## Optical Properties

**Effective Focal Length EFL (mm):** 400.47 @ 587.6nm

**Back Focal Length BFL (mm):** 399.37

**Coating:** BBAR (700-900nm)

**Coating Specification:** R<sub>abs</sub> <0.2% @ 700 - 900nm

**Substrate:** [Fused Silica \(Corning 7980\)](#)

**Surface Quality:** 20-10

**Power (P-V) @ 632.8nm:** 1.5λ

**Irregularity (P-V) @ 632.8nm:** λ/8

**Focal Length Tolerance (%):** ±1

**Radius R<sub>1</sub> (mm):** 183.60

<b>f/#:</b>	15.75	<b>Numerical Aperture NA:</b>	0.03
<b>Design Wavelength DWL (nm):</b>	800	<b>Wavelength Range (nm):</b>	700 - 900
<b>Angle of Incidence (°):</b>	0		

Please select your shipping country to view the most accurate inventory information, and to determine the correct Edmund Optics sales office for your order.

**Select Your Country/Region:**

### Regulatory Compliance

<b>RoHS 2015:</b>	<b>Compliant</b>	<b>Reach 219:</b>	<b>Compliant</b>
<b>Certificate of Conformance:</b>	<b>View</b>		

## Need different specs or modifications?

Edmund Optics offers comprehensive custom manufacturing services for optical and imaging components tailored to your specific application requirements. Whether in the prototyping phase or preparing for full-scale production, we provide flexible solutions to meet your needs. Our experienced engineers are here to assist—from concept to completion.

Our capabilities include:

- Custom dimensions, materials, coatings, and more
- High-precision surface quality and flatness
- Tight tolerances and complex geometries
- Scalable production—from prototype to volume

Learn more about our [custom manufacturing capabilities](#) or submit an inquiry [here](#).

## Product Details

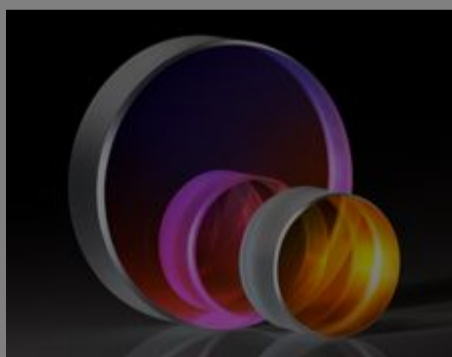
- Ultra-Thin Center Thickness to Limit GDD
- Low Loss Broadband IBS Anti-Reflection Coating
- Ideal for Ultrafast and Laser Optics Applications
- UV or IR Grade Fused Silica Substrates

TECHSPEC® Ultrafast Thin Plano-Convex Lenses are designed with an ultra-thin center thickness to provide a low group delay dispersion (GDD) for ultrafast laser pulses. TECHSPEC Ultrafast Thin Plano-Convex Lenses are ideal for collecting and focusing light from laser sources and their corresponding harmonics, including Ti:sapphire, Yb:YAG, and Nd:YAG, Holmium, and Thulium lasers. These thin PCX lenses are available in standard sizes with effective focal lengths from 50mm to 2000mm.

IR grade fused silica differs from UV grade fused silica by its reduced amount of OH<sup>-</sup> ions, resulting in higher transmission throughout the NIR spectrum and reduction of transmission in the UV spectrum.

## Technical Information

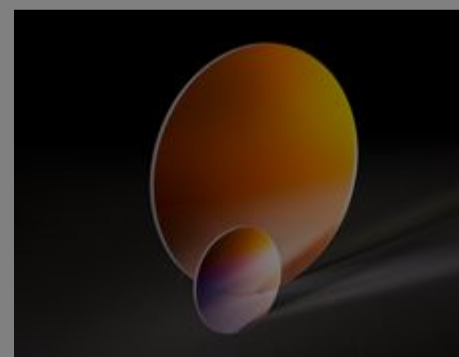
### Related Products



Ultrafast Optics

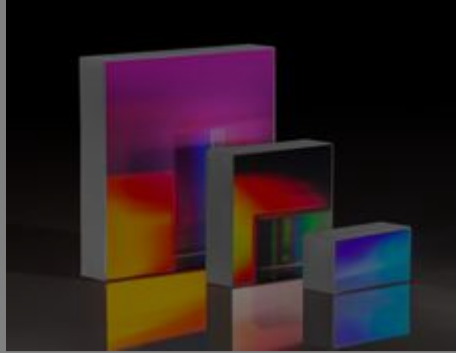


Thin Fused Silica Plano-Convex (PCX) Laser Lenses



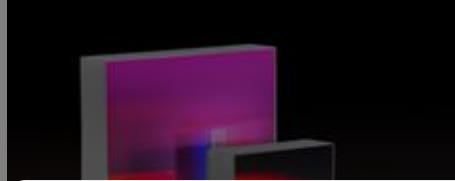
Ultrafast Thin Windows

## Frequently Purchased Together



#41-021 - 600 Grooves,  
12.5 x 25mm, 400nm Ruled  
Diffraction Grating  
€120,00

Qty



Diffraction Grating  
€120,00

Qty



Convex Lens  
€166,00

Qty



#64-560 - 25.0mm Optic Dia.,  
Optic Mount  
€32,75

Qty

Please select your shipping country to view the most accurate inventory information, and to determine the correct Edmund Optics sales office for your order.

**Select Your Country/Region:**

## Compatible Mounts

	Title	Type	Compare	Stock Number	Price	Buy
	25.4mm Optic Dia., 10mm Max Optic Thickness, Optic Mount	Fixed		#64-561	€32,75 Request Quote	20+ In Stock <input type="text" value="1"/>
	25.4mm Optic Dia., 13mm Max Optic Thickness, Optic Mount	Fixed		#64-562	€32,75 Request Quote	20+ In Stock <input type="text" value="1"/>
	25.0/25.4mm Optic Dia., X-Y Translating Optic Mount	Adjustable - Linear (XY)		#62-956	€276,00 Request Quote	2 In Stock <input type="text" value="1"/>
	25.0/25.4mm Optic Dia., X-Y-Z Translating Optic Mount	Adjustable - Linear (XYZ)		#62-959	€540,00 Request Quote	6 In Stock <input type="text" value="1"/>
	25.0/25.4mm Optic Dia., 5 Axes Optical Mount	Adjustable - Linear (XYZ) & Tip-Tilt		#13-776	€755,00 Request Quote	2 In Stock <input type="text" value="1"/>

Check out our full selection of mounts [here](#).

## Resources

### Media Type

- Application Note
- Technical Tool
- Trending in Optics
- Video
- Published Article
- FAQ
- Glossary
- Scientific Paper

**APPLICATION NOTE**

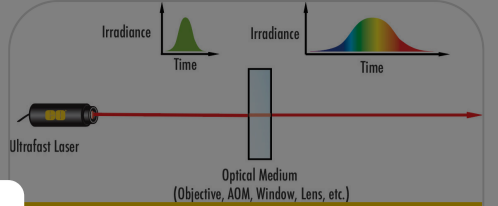
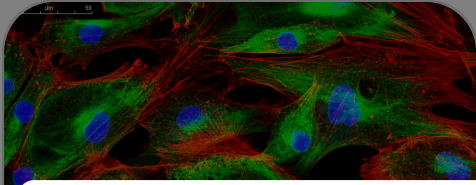
### An Introduction to Optical Coatings

**TECHNICAL TOOL**

### Gaussian Beams Calculator

**CASE STUDIES**

### Laser Optics for Eye Surgery



Please select your shipping country to view the most accurate inventory information, and to determine the correct Edmund Optics sales office for your order.

**Select Your Country/Region:**

**APPLICATION NOTE**

**Group Delay Dispersion and White Light Interferometry**

[View More](#)