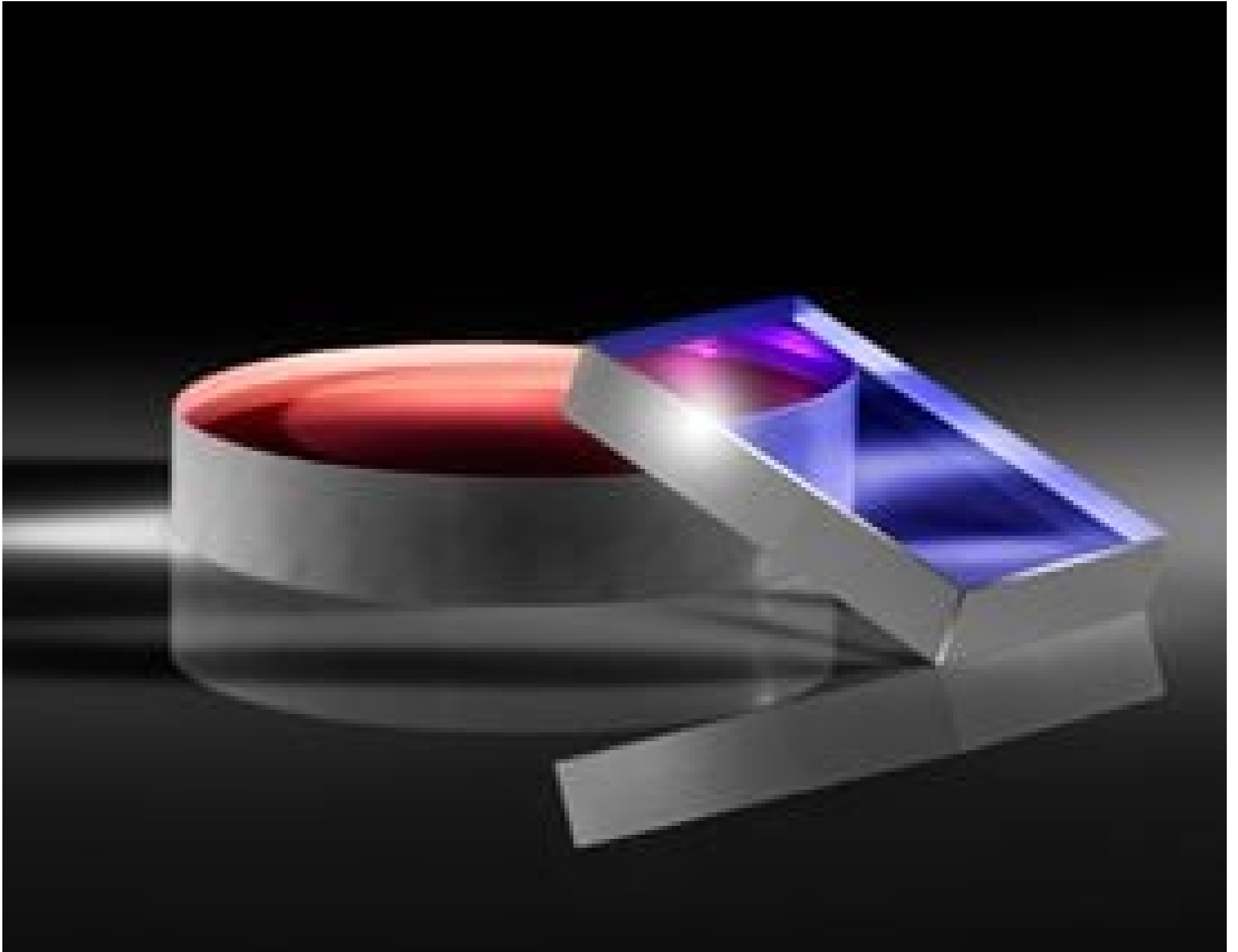


[See all 22 Products in Family](#)

TECHSPEC® 25.4 x 6.35mm, 10' Wedge, Mirror Substrate



TECHSPEC® Laser Mirror Substrates

Stock #21-252 **16 In Stock**

⊖ 1 ⊕ €115⁰⁰

ADD TO CART

Volume Pricing	
Qty 1-10	€115,00 each
Qty 11-25	€103,00 each
Qty 26-50	€91,50 each
Need More?	Request Quote

ⓘ Prices shown are exclusive of VAT/local taxes

Product Downloads

General

Laser Mirror Substrate **Type:**

Physical & Mechanical Properties

10 ±5 **Parallelism (arcmin):**

Clear Aperture (%):

Commercial Polish **Back Surface:**

25.40 +0.00/-0.10 **Diameter (mm):**

6.35 ±0.01 **Thickness (mm):**

Optical Properties

10-5 **Surface Quality:**

λ/10 **Surface Flatness (P-V):**

Uncoated **Coating:**

[Fused Silica](#) (Corning 7980) **Substrate:**

Regulatory Compliance

[View](#) **Certificate of Conformance:**

Product Details

- λ/10 and λ/20 Surface Flatness and 10-5 Surface Quality
- High Quality Fused Silica Substrates
- Imperial Sizes with Circular or Rectangular Geometries
- [Window Substrates](#) Also Available

TECHSPEC® Laser Mirror Substrates are manufactured from high quality fused silica and are designed for use with high power laser sources. These mirrors feature excellent surface specifications, including λ/10 and λ/20 surface flatness and 10-5 surface quality, to limit the possibility of reduced performance due to surface defects. The high surface quality of these mirror blanks also makes them ideal for use in demanding intra-cavity laser applications. TECHSPEC Laser Mirror Substrates are available in standard imperial sizes, with either circular or rectangular geometries. Please contact us if your application requires a custom size laser mirror substrate.

Compatible Mounts
