

[All Products](#) / [Optomechanics](#) / [Beamsplitters](#) / [Prism and Beamsplitter Mounts](#)

[See all 8 Products in Family](#)

TECHSPEC® 25mm



25mm Cube Beamsplitter Adapter, #58-877

Please select your shipping country to view the most accurate inventory information, and to determine the correct Edmund Optics sales office for your order.

Select Your Country/Region: European Union

Submit

1

€49^{,75}

ADD TO CART

Volume Pricing	
Qty 1-4	€49,75 each
Qty 5-9	€45,10 each
Qty 10+	€41,80 each
Need More?	Request Quote

Prices shown are exclusive of VAT/local taxes

Product Downloads

- STEP:step
- PDF Drawing:pdf
- IGES:igs
- eDrawing:eprt
- EO Spec Sheet
- [Download All](#)

General

Type: Fixed

Type of Optics: Cube

Type of Accessory: Cube Adapter

Physical & Mechanical Properties

Construction: Black Anodized Aluminum

Size of Compatible Mount (mm): 25.0/25.4 Circular Optical Mounts

Threading & Mounting

Size of Compatible Optics (mm): 25.0 - 25.4

Regulatory Compliance

RoHS 2015: **Compliant**

Reach 224: **Compliant**

Certificate of Conformance: [View](#)

Product Details

- Compatible with **TECHSPEC® Kinematic Mounts**
- Range of Accessories for Cube and Plate Beamsplitters
- Additional Adjustment Lead Screws, Locking Nuts, and Hardware
- Adapters for Plate Mounting
- Compatible with English/Metric Equivalent Component Sizes

TECHSPEC® Kinematic Mount Accessories are used to increase the versatility of TECHSPEC® Kinematic Mounts.

25mm Cube Beamsplitter Adapter (#58-877)

This adapter is for mounting a 25mm cube beamsplitter into a 25/25.4mm TECHSPEC® Kinematic Mount (#58-851 or #58-854). The adapter is placed in the kinematic mount aperture and is secured using the mount's set screw. Two set screws are included in the adapter, for securely mounting the cube beamsplitter.

25mm Diameter 45° Mirror/ Beamsplitter Mount (#58-878)

This mount can install a 25.4mm or 25mm circular mirror or beamsplitter into a 25/25.4mm TECHSPEC® Kinematic Mount (#58-851 or #58-854) at a 45° angle. The mount design retains the open aperture through the kinematic mount aperture and is secured using the kinematic mount's set screw. A set screw and two set screws are included in the adapter, for securely mounting the cube beamsplitter.

Horizontal Plate Adapters (#58-879, #58-880, #58-885)

Horizontal Plate Adapters are used to orient a kinematic mount's counterbored mounting holes. The Horizontal Plate Adapter #58-879 features 8-32 and M4 tapped mounting holes, and is used for 50/50.8mm Kinematic Mounts. Adapter #58-880 features 8-32 and M4 tapped mounting holes, and is used for 50/50.8mm Kinematic Mounts. Adapter #58-885 features both 8-32 and M4 tapped mounting holes, and is used for 50/50.8mm Kinematic Mounts.

Please select your shipping country to view the most accurate inventory information, and to determine the correct Edmund Optics sales office for your order.

Select Your Country/Region:

Note: Adjustment Screw for 50/50.8mm Kinematic Mounts #58-882 is designed specifically for use with 50/50.8mm TECHSPEC® Kinematic Mounts and T-Mount TECHSPEC® Kinematic Mounts. If used with other size kinematic mounts, it will damage the springs used in the mount.

Related Products



Kinematic Optical Mirror Mounts



Kinematic Square Optical Mounts

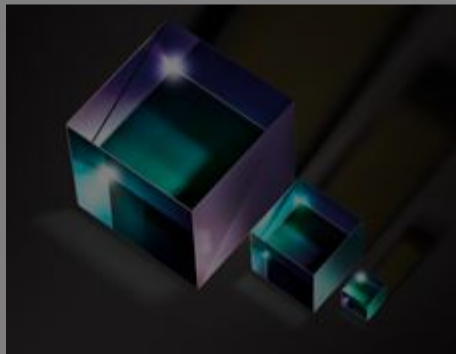


Kinematic Table Platforms



Compact Kinematic Mounts

Frequently Purchased Together



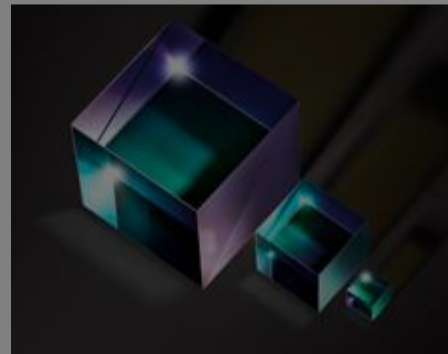
#32-505 - 25mm 50R/50T Cube Beamsplitter
€278,00

Qty



#32-550 - 25mm, Aluminum, High Tolerance N-BK7 Right Angle Prism
€146,00

Qty



#32-702 - 35mm 50R/50T Cube Beamsplitter
€389,00

Qty



#34-552 - English Ball Point Hex Driver Set
€112,00

Qty

Resources

Media Type

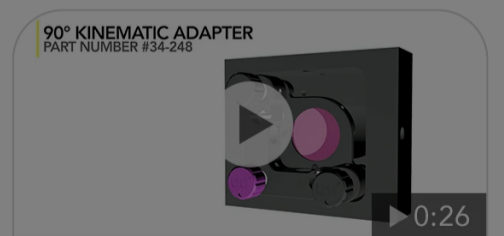
- Application Note
- Video
- FAQ
- Glossary
- Trending in Optics



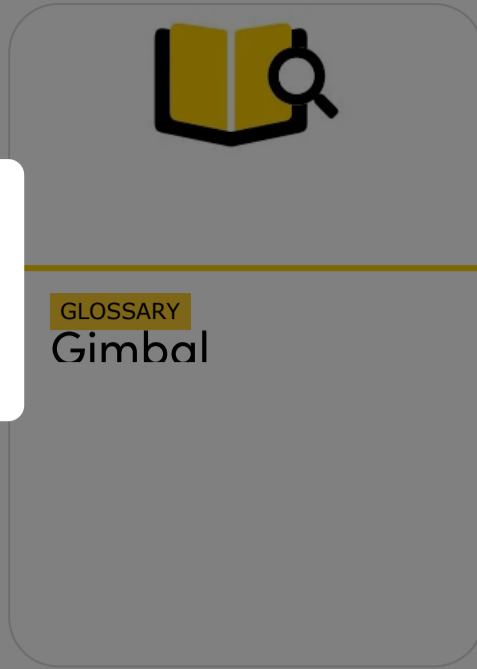
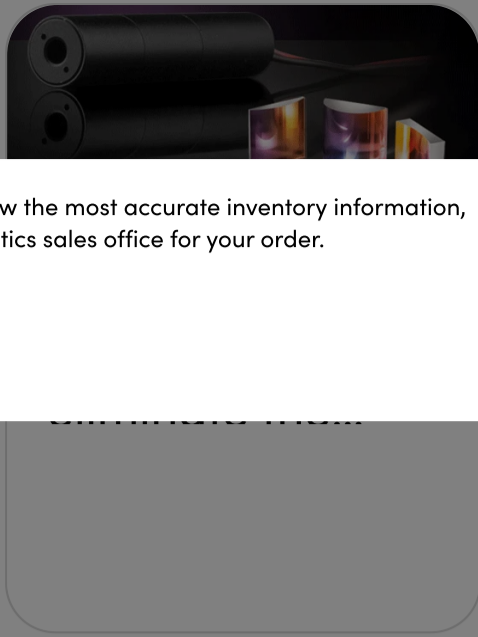
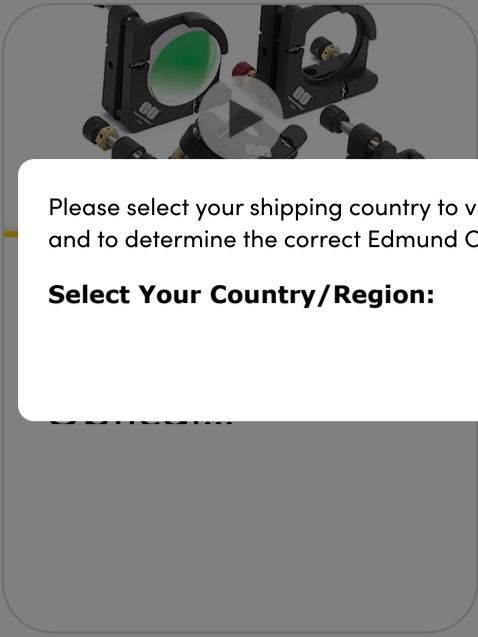
APPLICATION NOTE
A Closer Look at Kinematic Movement



VIDEO
E-Series Kinematic Optical Mirror Mounts



VIDEO
TECHSPEC® 90° Kinematic Adapter



Please select your shipping country to view the most accurate inventory information, and to determine the correct Edmund Optics sales office for your order.

Select Your Country/Region:

[View More](#)