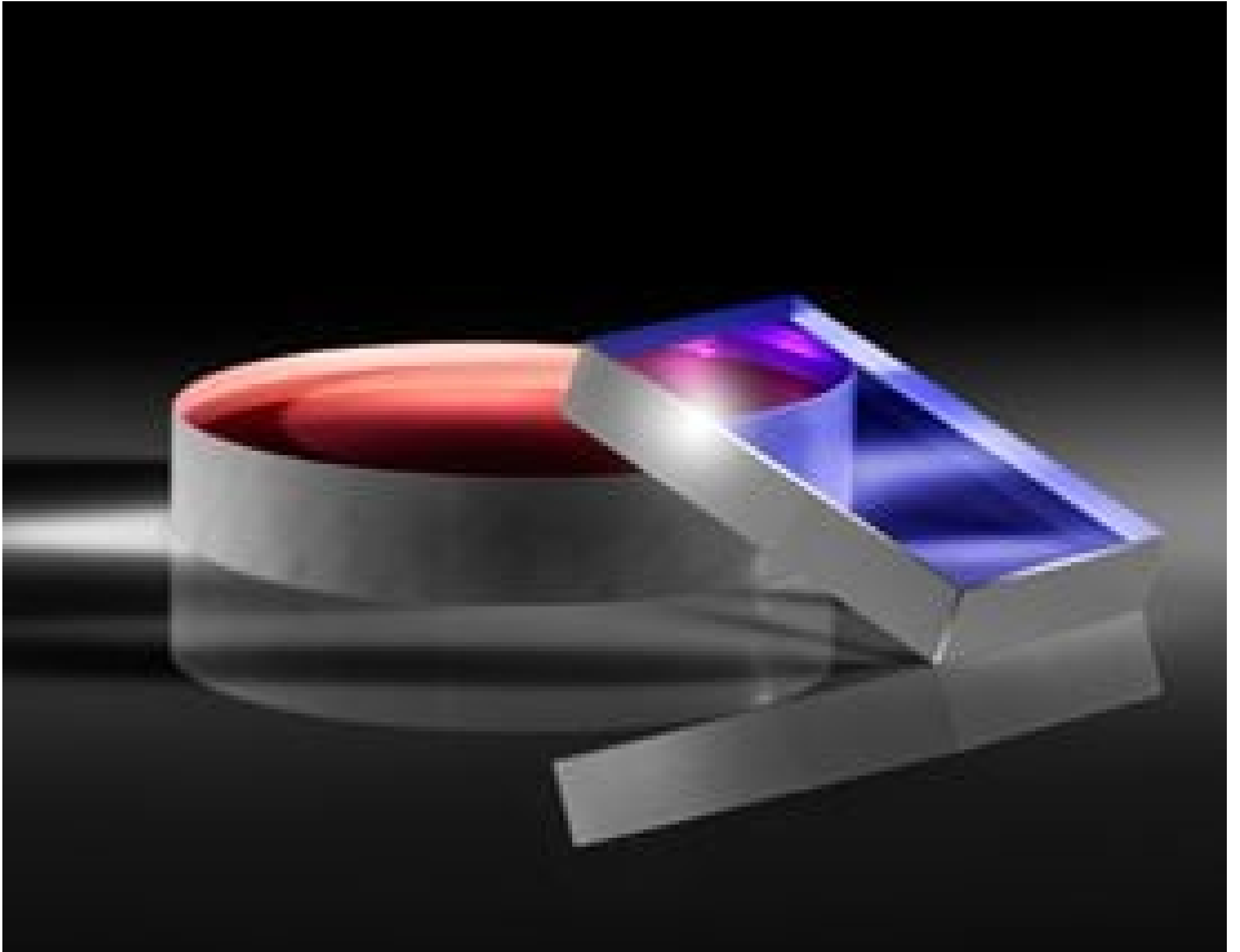


**TECHSPEC® 25mm Dia. Laser Mirror Substrate**



TECHSPEC® Laser Mirror Substrates

Stock #47-018 **20+ In Stock**

⊖ 1 ⊕ €107.<sup>00</sup>

**ADD TO CART**

Volume Pricing	
Qty 1-10	€107,00 each
Qty 11-25	€95,00 each
Qty 26-50	€84,00 each
Need More?	<a href="#">Request Quote</a>

ⓘ Prices shown are exclusive of VAT/local taxes

Product Downloads

**General**

Laser Mirror Substrate **Type:**

**Physical & Mechanical Properties**

<3 **Parallelism (arcmin):**

**Clear Aperture (%):**

Ground **Back Surface:**

25.00 +0.00/-0.20 **Diameter (mm):**

6.00 ±0.20 **Thickness (mm):**

Ground, protective bevel as needed **Edges:**

## Optical Properties

10-5 **Surface Quality:**

λ/10 **Surface Flatness (P-V):**

Uncoated **Coating:**

[Fused Silica](#) (Coming 7980) **Substrate:**

## Regulatory Compliance

[Compliant](#) **RoHS 2015:**

[Compliant](#) **Reach 219:**

[View](#) **Certificate of Conformance:**

## Product Details

- λ/10 and λ/20 Surface Flatness and 10-5 Surface Quality
- High Quality Fused Silica Substrates
- Imperial Sizes with Circular or Rectangular Geometries
- [Window Substrates](#) Also Available

TECHSPEC® Laser Mirror Substrates are manufactured from high quality fused silica and are designed for use with high power laser sources. These mirrors feature excellent surface specifications, including λ/10 and λ/20 surface flatness and 10-5 surface quality, to limit the possibility of reduced performance due to surface defects. The high surface quality of these mirror blanks also makes them ideal for use in demanding intra-cavity laser applications. TECHSPEC Laser Mirror Substrates are available in standard imperial sizes, with either circular or rectangular geometries. Please contact us if your application requires a custom size laser mirror substrate.

## Compatible Mounts