

[All Products](#) / [Optics](#) / [Optical Lens](#) / [Illumination Grade Cylinder Lens](#)

[See all 227 Products in Family](#)

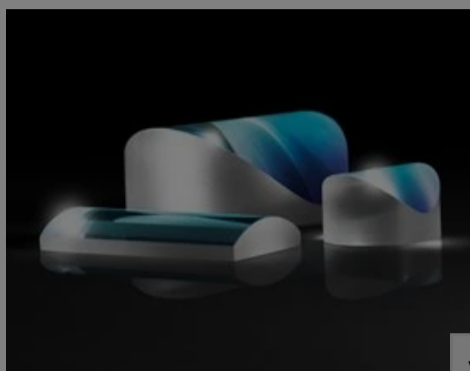
TECHSPEC®

25mm H x 50mm W Illumination Grade PCX Cylinder Lens

Please select your shipping country to view the most accurate inventory information, and to determine the correct Edmund Optics sales office for your order.

Select Your Country/Region: European Union

Submit



Stock #46-022 [CONTACT US](#)

1

€103^{,00}

ADD TO CART

Volume Pricing	
Qty 1-5	€103,00 each
Qty 6-25	€91,00 each
Qty 26-49	€89,00 each
Need More?	Request Quote

Prices shown are exclusive of VAT/local taxes

Product Downloads

- STEP:step
- PDF Drawing:pdf
- IGES:igs
- Zemax:zar
- Zemax:zmx
- eDrawing:eprt
- Code V:seq
- EO Spec Sheet
- [Download All](#)

General

Type: Cylinder Lens, Plano-Convex

Physical & Mechanical Properties

Center Thickness CT (mm): 3.06

Center Thickness Tolerance (mm): ±0.1

Dimensional Tolerance (mm): +0.0/-0.2

Dimensions (mm): 25.0 x 50.0

Edge Thickness ET (mm): 1.00

Optical Properties

Effective Focal Length EFL (mm): 75.00

Substrate: [N-BK7](#)

f/#: 3

Numerical Aperture NA: 0.17

Coating: Uncoated

Wavelength Range (nm): 350 - 2200

Back Focal Length BFL (mm): 72.89

Focal Length Tolerance (%): ±3

Radius R₁ (mm): 38.89

Surface Quality: 60-40

Regulatory Compliance

RoHS 2015: **Compliant**

Reach 224: **Compliant**

Certificate of Conformance: [View](#)

Please select your shipping country to view the most accurate inventory information, and to determine the correct Edmund Optics sales office for your order.

Select Your Country/Region:

Need different specs or measurements?

Edmund Optics offers comprehensive custom manufacturing services for optical and imaging components tailored to your specific application requirements. Whether in the prototyping phase or preparing for full-scale production, we provide flexible solutions to meet your needs. Our experienced engineers are here to assist—from concept to completion.

Our capabilities include:

- Custom dimensions, materials, coatings, and more
- High-precision surface quality and flatness
- Tight tolerances and complex geometries
- Scalable production—from prototype to volume

Learn more about our [custom manufacturing capabilities](#) or submit an inquiry [here](#).

Product Details

- N-BK7 Substrate for Broadband Performance
- Cost-Effective for OEM Integration
- Multiple Coating Options Available

TECHSPEC® Illumination Grade PCX Cylinder Lenses are similar to Plano-Convex (PCX) lenses in profile, but include a portion of a cylinder instead of a sphere. These lenses focus light in one dimension and can transform a point of light into a line. TECHSPEC® Illumination Grade PCX Cylinder Lenses are available in circular and rectangular versions, along with multiple coating options. Cylinder lenses are ideal for line projection in machine vision applications or guidance systems.

Note: For negative focal length cylinder lenses, see our [TECHSPEC® Illumination Grade PCV Cylinder Lenses](#).

LASER OPTICS MADE BY EDMUND OPTICS®

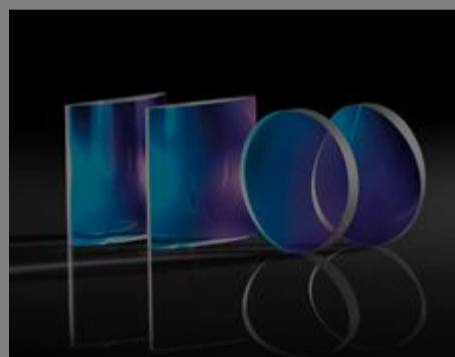
[LEARN MORE](#)

Technical Information

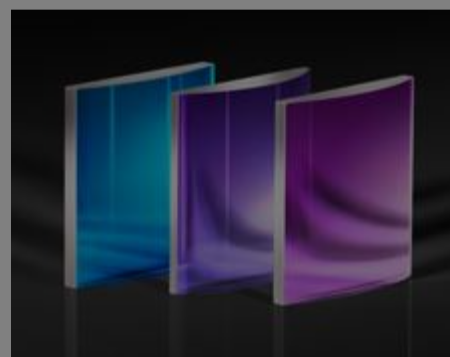
Related Products



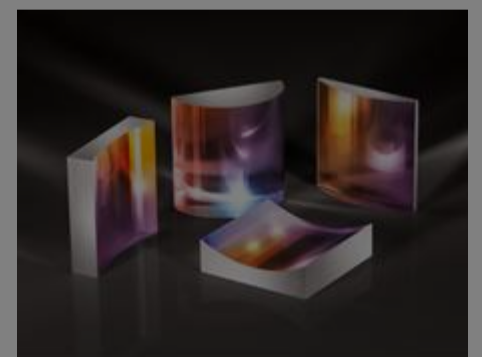
Illumination Grade PCV
Cylinder Lenses



Imaging Grade PCX
Cylinder Lenses



Laser Grade Laser Line
Cylinder Lenses



Laser Grade Broadband
Cylinder Lenses

Frequently Purchased Together



#32-502 - 30mm Dia. x 150mm FL, MgF₂ Coated, Achromatic Doublet Lens
€145,00

Qty



€42,00

Qty



€50,50

Qty



#33-376 - 40.0mm Dia. x 200.0mm FL, Uncoated, Plano-Convex Lens
€47,00

Qty

Please select your shipping country to view the most accurate inventory information, and to determine the correct Edmund Optics sales office for your order.

Select Your Country/Region:

Resources

Media Type

- Application Note
- Trending in Optics
- Published Article
- FAQ
- Glossary
- Video

APPLICATION NOTE

Anti-Reflection (AR) Coatings

APPLICATION NOTE

Laser Beam Shaping Overview

TRENDING IN OPTICS

Non-Circular Optics for System Miniaturization

APPLICATION NOTE

What are Cylinder Lenses?

APPLICATION NOTE

Considerations When Using Cylinder Lenses

PUBLISHED ARTICLE

Cylinder Lenses for Beam Shaping

[View More](#)