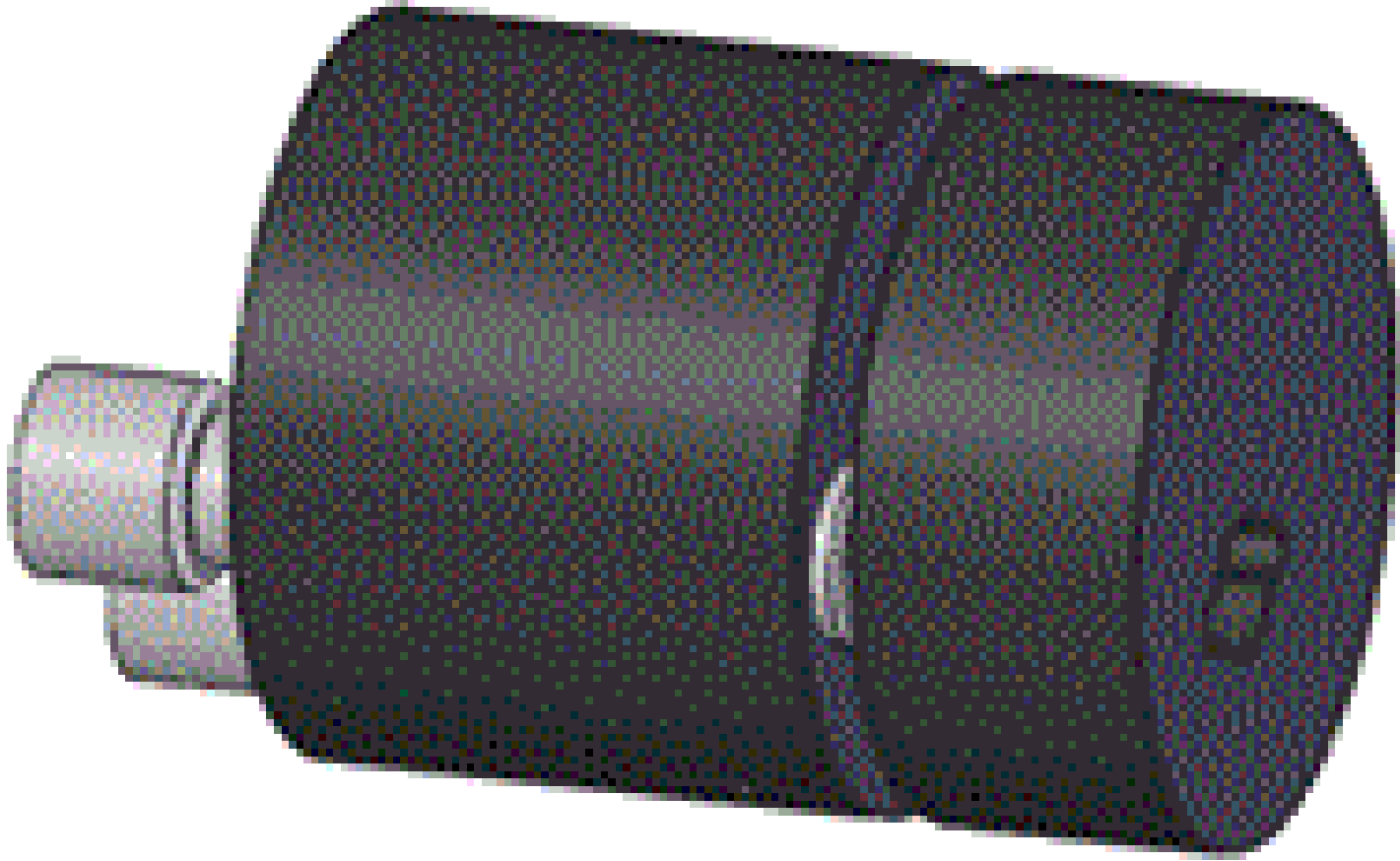


**TECHSPEC® 25mm Tip/Tilt Solid Table**



25mm Tip/Tilt Solid Table, #86-026

Stock **#86-026** [CONTACT US](#)

- 1 + €303<sup>00</sup>

**ADD TO CART**

Volume Pricing	
Qty 1+	€303,00 each
Need More?	<a href="#">Request Quote</a>

ⓘ Prices shown are exclusive of VAT/local taxes

Product Downloads

**General**

Tip-Tilt **Function:**

Circular **Type of Optics:**

25mm Diameter Table (No Tapped Hole) **Note:**

**Physical & Mechanical Properties**

**Compatible Plate Inner Diameter (mm):**

25.0

**Construction:**

Black Anodized Aluminum

**Dimensions (mm):**

25 Dia.

**Adjustment Screw Pitch (mm):**

0.5

**Travel (°):**

±8 Tip/Tilt

## Regulatory Compliance

**RoHS 2015:**

[Compliant](#)

**Certificate of Conformance:**

[View](#)

**Reach 235:**

[Compliant](#)

## Product Details

- Available for a Range of Optical Components
- Anodized Aluminum Construction with Stainless Steel Screws
- 0.5mm Pitch Fine Adjustment Screw
- [Fixed Optical Mounts](#) Also Available

Ideal for beam steering applications, TECHSPEC® Cage System Adjustable Optical Mounts are used to integrate a variety of optical components into a TECHSPEC Cage System. Designed to fit within the inner diameter of 25mm or 30mm standard [cage system plates](#), these optical mounts utilize set screws to secure optical components in place, providing the stability and adjustment needed for precision optical alignment. [#85-695](#) 25.4mm Kinematic Mount features a 12.7mm clear aperture and can be paired with [#85-699](#) 45° plate beamsplitter mount.