

[See all 12 Products in Family](#)

TECHSPEC® 2mm, Uncoated, N-SF11 Micro Right Angle Prism



N-SF11 Right Angle Prisms

Stock #45-524 **16 In Stock**

⊖ 1 ⊕ €143⁰⁰

ADD TO CART

Volume Pricing	
Qty 1-5	€143,00 each
Qty 6-25	€129,00 each
Qty 26-49	€115,00 each
Need More?	Request Quote

ⓘ Prices shown are exclusive of VAT/local taxes

Product Downloads

General

Right Angle Prism **Type:**

Physical & Mechanical Properties

±0.05 **Dimensional Tolerance (mm):**

Bevel:

Protective as needed

2.80 Length of Hypotenuse (mm):

2.00 Length of Legs (mm):

Optical Properties

Uncoated Coating:

N-SF11 Substrate:

20-10 Surface Quality:

±2 Angle Tolerance (arcmin):

Left-Handed Image Orientation:

90 Ray Deviation (°):

400 - 2500 Wavelength Range (nm):

1.25 Power (fringes) @ 632.8nm:

0.25 Irregularity (fringes) @ 632.8nm:

Regulatory Compliance

Compliant RoHS 2015:

Compliant Reach 219:

View Certificate of Conformance:

Need different specs or modifications?

Edmund Optics offers comprehensive custom manufacturing services for optical and imaging components tailored to your specific application requirements. Whether in the prototyping phase or preparing for full-scale production, we provide flexible solutions to meet your needs. Our experienced engineers are here to assist—from concept to completion.

Our capabilities include:

- Custom dimensions, materials, coatings, and more
- High-precision surface quality and flatness
- Tight tolerances and complex geometries
- Scalable production—from prototype to volume

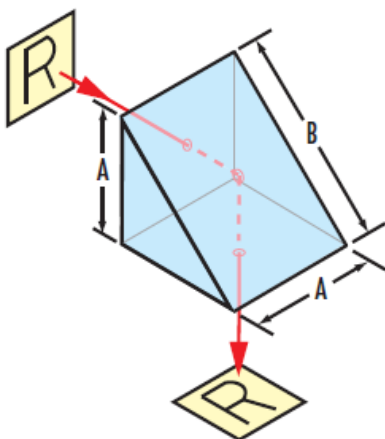
Learn more about our [custom manufacturing capabilities](#) or submit an inquiry [here](#).

Product Details

- Ray Deviation of 90°
- Left Handed Image
- High Refractive Index Material
- Additional [Right Angle Prism](#) Options Available

TECHSPEC® N-SF11 Right Angle Prisms are made from high index N-SF11. Right angle prisms are generally used to bend image paths or redirect light at 90°. This produces a left-handed image, and depending on the orientation of the prism, the image may be inverted or reverted. Right angle prisms can also be used in combination for image/beam displacement. TECHSPEC® N-SF11 Right Angle Prisms have a high refractive index that increases the optical path length, thus reducing physical working distance requirements. These lenses are available uncoated or with an aluminized hypotenuse and anti-reflection coated faces.

Technical Information





Right Angle Prism Ray Path



Right Angle Prism Ray Path



Right Angle Prism Tunnel Diagram



Right Angle Prism Tunnel Diagram