

[All Products](#) / [Optomechanics](#) / [Precision Pinholes](#)

[See all 96 Products in Family](#)

# 35µm Aperture



35µm Aperture Diameter, Mounted, Precision Pinhole, #56-281

Please select your shipping country to view the most accurate inventory information, and to determine the correct Edmund Optics sales office for your order.

Select Your Country/Region: European Union

Submit

1

€84<sup>00</sup>

ADD TO CART

Volume Pricing	
Qty 1-5	€84,00 each
Qty 6-10	€74,20 each
Qty 11+	€68,60 each
Need More?	<a href="#">Request Quote</a>

Prices shown are exclusive of VAT/local taxes

### Product Downloads

- STEP:step
- PDF Drawing:pdf
- IGES:igs
- eDrawing:eprt
- EO Spec Sheet
- [Download All](#)

## General

Type: Mounted

## Physical & Mechanical Properties

Outer Diameter (mm): 25 +0.4/-0.000

Construction: Stainless Steel

Fixed Aperture Diameter (µm): 35

Thickness (mm): 0.03 Nominal

Aperture Tolerance (µm): ±5

Aperture Centration (µm): ±125

## Threading & Mounting

Mount Thickness (mm): 1.25 ±0.05

## Regulatory Compliance

RoHS 2015: **Compliant**

Certificate of Conformance: [View](#)

Reach 247: **Compliant**

## Product Details

- Available in Aperture Mounts for a Secure Mechanical Support
- Pinhole Sized Ranging from 1 to 1,000 Microns
- High Power Apertures** Available

### Unmounted Precision Pinholes

Precision Pinholes are high quality apertures centered to  $\pm 0.002''$  (50 microns). They are constructed of stainless steel and are 3/8" (9.5mm) in diameter. Smaller diameter pinholes will reduce energy throughput, while larger diameter pinholes will pass more spatial noise. Precision pinholes have sizes ranging from 1 to 1,000 microns. Typical applications include leak detection, aerosol studies, holography, fiber optics guides, spatial filtering, research, and more.

Use the [Precision Pinhole Mount](#) to integrate unmounted pinholes into a variety of mechanical components easily.

## Mounted Precision Pinholes

Precision Pinholes are available in aperture mount and unmounted. A 25mm diameter black-anodized aluminum mount is available for a 25mm diameter pinhole.

**Note:** Aperture Centering to Mount  $\pm 125$  microns. Edmund Optics offers a wide selection of precision pinholes available in a range of diameters and are ideal for applications requiring precise aperture geometry and high edge quality. Available in a variety of sizes for use in industrial environments.

Please select your shipping country to view the most accurate inventory information, and to determine the correct Edmund Optics sales office for your order.

**Select Your Country/Region:**

A 25mm diameter pinhole is sealed within a

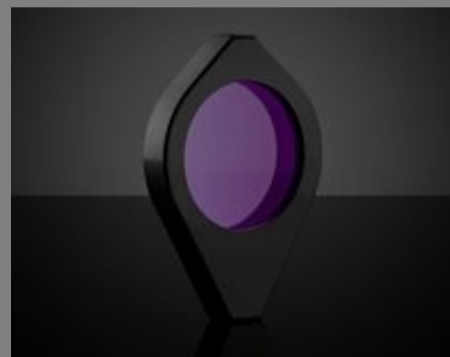
research, and more. These pinholes provide consistent circular apertures, providing consistent circular apertures, from experimental labs to

## Technical Information

## Related Products



Precision Pinhole Mount



Compact Mirror & Lens Mounts

## Frequently Purchased Together



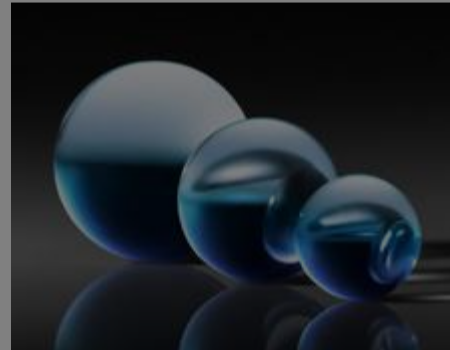
#36-391 - 50µm Aperture Diameter, Unmounted, Precision Pinhole  
€72,50

Qty



#32-481 - 25.0mm Dia. x 100.0mm FL Uncoated, Plano-Convex Lens  
€32,75

Qty



#32-746 - 6.0mm Diameter, N-BK7 Ball Lens  
€47,50

Qty



#36-389 - 10µm Aperture Diameter, Unmounted, Precision Pinhole  
€84,00

Qty



## Resources

### Media Type

- FAQ
- Glossary
- Application Note

? FAQ

What do spatial filters do and how do I use them?

GLOSSARY

Spatial Filter

APPLICATION NOTE

Understanding Spatial Filters

Trending in Optics

Video

? FAQ

? FAQ

GLOSSARY

Axial Runout

Please select your shipping country to view the most accurate inventory information, and to determine the correct Edmund Optics sales office for your order.

**Select Your Country/Region:**

View More