

[See all 4 Products in Family](#)

38.1mm Dia. x 63.5mm FL, Uncoated, ISP Optics Calcium Fluoride (CaF₂) DCX Lens | CF-BX-38-63

See More by [ISP Optics](#)



Calcium Fluoride Double-Convex (DCX) Lenses

Stock #24-768 CLEARANCE **7 In Stock**

- 1 + €449.⁰⁰

ADD TO CART

Volume Pricing	
Qty 1-9	€449,00 each
Qty 10+	€404,00 each
Need More?	Request Quote

! Prices shown are exclusive of VAT/local taxes

Product Downloads

General

Double-Convex Lens **Type:**

CF-BX-38-63 **Model Number:**

Physical & Mechanical Properties

38.10 +0.00/-0.13	Diameter (mm):
<3	Centering (arcmin):
Protective as needed	Bevel:
10.20 ±0.20	Center Thickness CT (mm):
2.50	Edge Thickness ET (mm):
34.29	Clear Aperture CA (mm):

Optical Properties

63.50 @5μm	Effective Focal Length EFL (mm):
Uncoated	Coating:
Calcium Fluoride (CaF ₂)	Substrate: <input type="checkbox"/>
60-40	Surface Quality:
λ	Irregularity (P-V) @ 632.8nm:
49.09	Radius R₁ (mm):
49.09	Radius R₂ (mm):
1.67	f#:
±2	Focal Length Tolerance (%):
0.30	Numerical Aperture NA:
300 - 8000	Wavelength Range (nm):

Regulatory Compliance

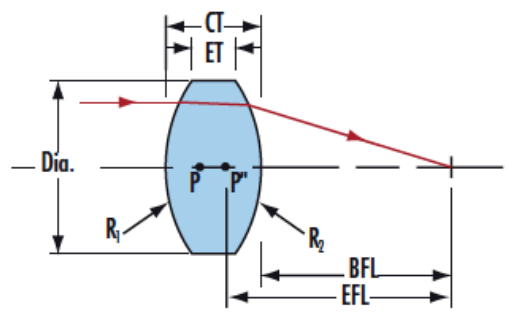
Compliant	RoHS 2015:
View	Certificate of Conformance:
Compliant	Reach 240:

Product Details

- Greater than 90% Transmission from 350nm-7μm
- Low Index of Refraction
- High Laser Damage Threshold

ISP Optics Calcium Fluoride Double-Convex(DCX) Lenses are ideal for finite imaging applications requiring high transmission in the infrared wavelength spectrum. Calcium Fluoride features greater than 90% transmission from 350nm to 7μm and a low refractive index, allowing it to be used without an antireflective coating. In addition, its low absorption and high damage threshold makes it a popular choice for use with excimer lasers. ISP Optics Calcium Fluoride Double-Convex(DCX) Lenses offer low solubility and superior hardness compared to other fluoride-based substrates, allowing for use in harsh environments.

Technical Information





Special Handling

These optics require special handling to avoid damage and ensure long-term performance. Proper handling, cleaning, and storage are essential to maintain optical quality. Explore our [Optics Cleaning Resources](#) for step-by-step guides and best practices. For personalized assistance, [Email us](#) or [Chat](#) with our technical support team.



Component Handling Tools