

[All Products](#) / [Lights and Illuminators](#) / [Advanced Illumination Side-Fire](#)

[See all 20 Products in Family](#)

4" x 4" 530nm E

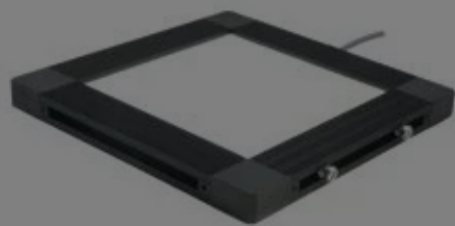
See More by [Advanced Illumination](#)

Please select your shipping country to view the most accurate inventory information, and to determine the correct Edmund Optics sales office for your order.

Select Your Country/Region: European Union

Submit

Stock #73-903 **1 In Stock**



1

€815⁰⁰

ADD TO CART

Volume Pricing	
Qty 1+	€815,00 each
Need More?	Request Quote

Product Downloads	
	PDF Drawing:pdf
	Spec Sheets:pdf
	Download All

Prices shown are exclusive of VAT/local taxes

General

Model Number:	BX2-100100530IC	LED Lifetime (hours):	50,000
Type of Illumination:	LED Illuminator	Manufacturer:	Advanced Illumination
Geometry:	Backlight	Illumination Mode:	Constant

Physical & Mechanical Properties

Dimensions (mm):	157.5 L x 157.5 W x 19.1 T	Active Area (inches):	4 x 4
-------------------------	----------------------------	------------------------------	-------

Optical Properties

Color:	Green	Wavelength (nm):	530
---------------	-------	-------------------------	-----

Hardware & Interface Connectivity

Power Supply:	Power Supply Required and Sold Separately: USA: #66-855 Europe: #66-855 Japan: #89-513 Korea: #33-773 China: #66-855
----------------------	---

Environmental & Durability Factors

Operating Temperature (°C):	0 - 35
------------------------------------	--------

Regulatory Compliance

RoHS 2015: **Exempt**

Certificate of Conformance: [View](#)

Reach 247: **Contains SVHC(s)**

Please select your shipping country to view the most accurate inventory information, and to determine the correct Edmund Optics sales office for your order.

Select Your Country/Region:

Product Details

- 30% Brighter than Comparable Surface Mount Light
- Uniform, Low Heat Illumination

Advanced Illumination Side-Fired LED Backlights are high performance alternatives to surface mount lights. Advanced Illumination Side-Fired LED Backlights provide uniform, low heat illumination that is 30% brighter than surface mount lights of equal size. To simplify system integration, these backlights include mounting brackets and mounting channels for M6 nuts.

Note: Required 24V power supply [#66-855](#). [Accessories for Advanced Illumination products](#) are available and sold separately. Units cannot be intensity controlled.

Accessories

Note: Compatible accessories for individual stock numbers may vary. If unsure about which accessories work with your products, please contact us [here](#).

	Title	Compare	Stock Number	Price	Buy
MORE+	24V Power Supply with Tinned Leads		#66-855	€95,00 Request Quote	16 In Stock <input type="text" value="1"/>

Resources

Media Type

- Technical Tool
- Application Note
- FAQ
- Glossary
- Video
- Published Article

TECHNICAL TOOL
Illumination Spot Size Calculator

APPLICATION NOTE
Common Illumination Types

APPLICATION NOTE
Using Structured Illumination

? FAQ
What is ripple in illuminators and how does it affect mv...

? FAQ
What is the advantage of high frequency illumination?

? FAQ
What are the advantages of LED illumination?

[View More](#)

Please select your shipping country to view the most accurate inventory information, and to determine the correct Edmund Optics sales office for your order.

Select Your Country/Region: