

[All Products](#) / [Optics](#) / [Optical Lenses](#) / [Molded Diffuse Aspheric Condenser Lenses](#)

[See all 12 Products in Family](#)

40mm Dia. x 28mm Thick Smooth Diffuse

Please select your shipping country to view the most accurate inventory information, and to determine the correct Edmund Optics sales office for your order.

Select Your Country/Region: European Union

Submit



Molded Diffuse Aspheric Condenser Lenses

Stock #22-683 [CONTACT US](#)

1

€50^{,00}

ADD TO CART

Volume Pricing	
Qty 1-10	€50,00 each
Qty 11-49	€45,00 each
Need More?	Request Quote

Prices shown are exclusive of VAT/local taxes

Product Downloads	
STEP:step	PDF Drawing:pdf
IGES:igs	eDrawing:eprt
EO Spec Sheet	Download All

General

Note: Maximum of 5 imperfections allowed with an area of 0.8mm, per ISO 10110-7 specification of 5/5 x 0.63. [Click here](#) for more information on the ISO 10110 surface quality specification.

Physical & Mechanical Properties

Diameter (mm):	40.00 +0.00/-0.30	Centering (arcmin):	≤25
Clear Aperture CA (mm):	32.40	Edge Thickness ET (mm):	5.07
Center Thickness CT (mm):	18.00 ±0.30	Bevel:	Protective as needed
Diameter of Asphere (mm):	36	Shape of Back Surface:	Plano
Grit:	Smooth		

Optical Properties

Effective Focal Length EFL (mm):	28.50	Numerical Aperture NA:	0.63
Back Focal Length BFL (mm):	16.90	Substrate:	Liba2000+

Focal Length Tolerance (%) :	±7	Coating:	Uncoated
Surface Quality:	As Molded	f/#:	0.70
Radius R₂ (mm):	Plano		
Conjugate Distance:	Infinite	Wavelength (nm):	

Please select your shipping country to view the most accurate inventory information, and to determine the correct Edmund Optics sales office for your order.

Select Your Country/Region:

Regulatory Compliance

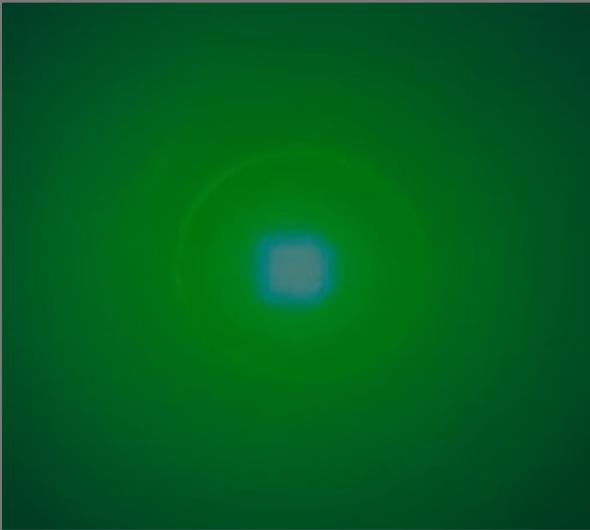
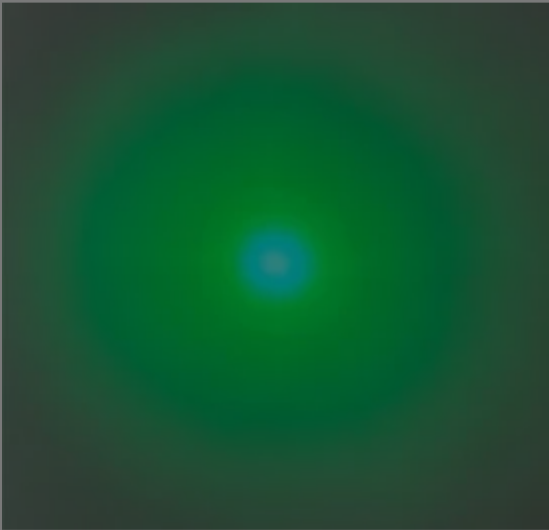
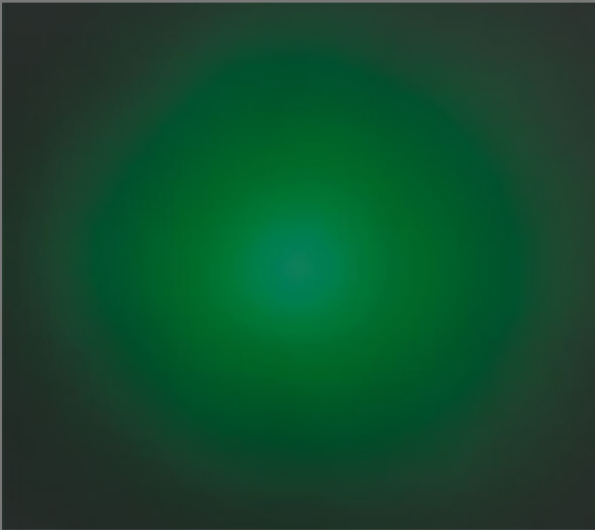

RoHS 2015:	Compliant	Certificate of Conformance:	View
Reach 242:	Compliant		

Product Details

- Combine a Condenser and Diffuser into One Element
- Fine, Medium, and Rough Diffuser Surface Textures
- Provide Diffuse, Homogenous Illumination
- **Condenser Lenses** and **Diffusers** Also Available

Molded Diffuse Aspheric Condenser Lenses combine a condenser lens and a diffuser into one optical element to simplify illumination systems. These lenses collimate light from LEDs and other light sources to provide homogenous illumination with greater efficiency than using a condenser lens with a ground glass diffuser. Lenses are available with three molded diffuser surface textures (fine, medium, and rough) with coarser textures providing a higher degree of diffusion but lower transmission. Molded Diffuse Aspheric Condenser Lenses feature durable glass substrates, enabling their use with low to high power LEDs, and are ideal for space constrained systems requiring diffuse, homogenous illumination.

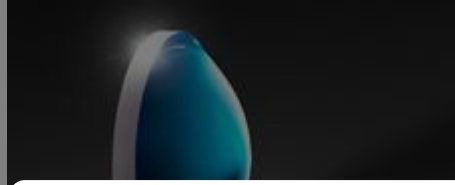
Technical Information

Regular Condenser Lens	Condenser Lens with Smooth Diffuser	Condenser Lens with Medium Diffuser	Condenser Lens with Rough Diffuser
			
Light collimated from an LED using a regular condenser lens and condenser lenses with a diffuser surface. As the texture of the diffuser surface becomes rougher, the			

Related Products



Molded Aspheric
Condenser Lenses

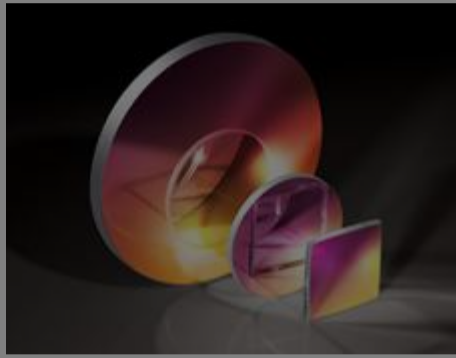


Ground Glass Diffusers

Please select your shipping country to view the most accurate inventory information, and to determine the correct Edmund Optics sales office for your order.

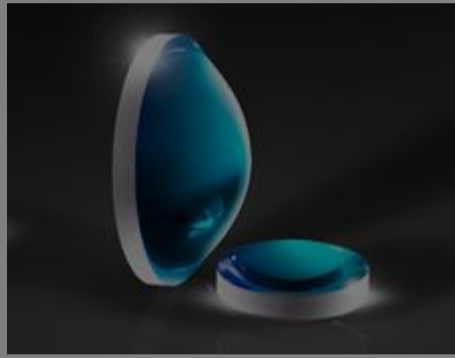
Select Your Country/Region:

Frequently Purchased Together



#32-442 - 38 x 150mm, 4-6λ Mirror
€34,25

Qty



#35-064 - 26mm Dia. x 19.5mm
FL, MgF₂ Molded Aspheric
Condenser Lens
€60,00

Qty



#45-245 - 50.0mm Dia. x 75.0mm
FL, Uncoated, Plano-Convex Lens
€52,50

Qty



#54-504 - 60° Diffusing Angle
25mm Dia Mounted
€202,00

Qty