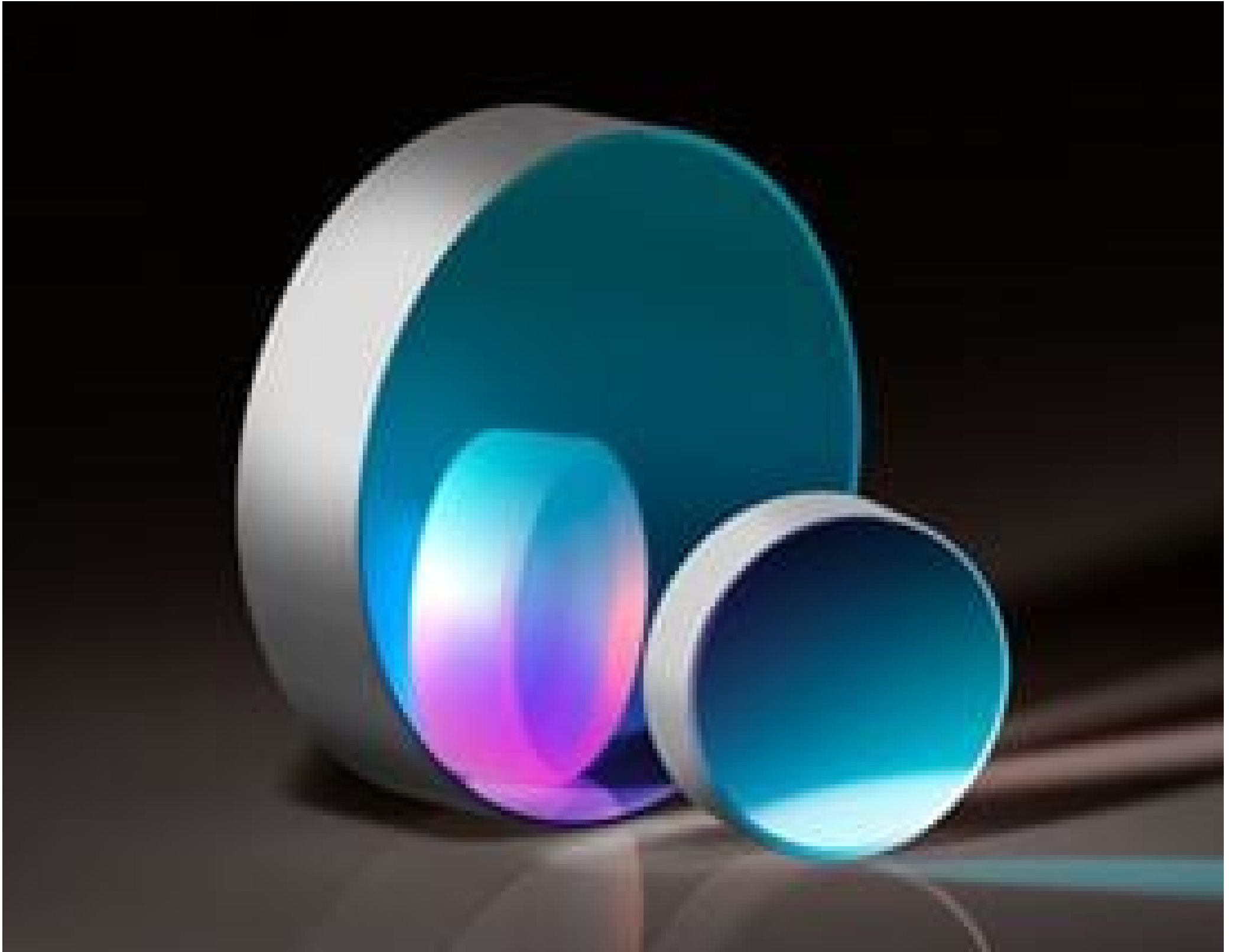


[See all 11 Products in Family](#)

TECHSPEC® 50.8mm Dia. Silver, Precision Broadband Laser Mirror



Stock **#48-017** 20+ In Stock

- 1 + €351.⁰⁰

ADD TO CART

Volume Pricing	
Qty 1-5	€351,00 each
Qty 6-25	€309,00 each
Need More?	Request Quote

i Prices shown are exclusive of VAT/local taxes

Product Downloads

General

Laser Mirror **Type:**
Optical Power: $\lambda/10$ **Note:**

Physical & Mechanical Properties

>80 **Clear Aperture (%):**

Ground	Back Surface:
50.80 +0.0/-0.2	Diameter (mm):
12.50 ±0.3	Thickness (mm):
Optical Properties	
20-10	Surface Quality:
R _{avg} >99% @ 0.45 - 12.0μm	Coating Specification:
450 - 12000	Wavelength Range (nm):
λ10	Surface Flatness (P-V):
λ20	Irregularity (P-V) @ 632.8nm:
Metal	Coating Type:
Protected Silver (450-12000nm)	Coating:
0-45	Angle of Incidence (°):
BOROFLOAT®	Substrate: <input type="checkbox"/>
0.5 J/cm ² @ 10ns	Damage Threshold, By Design: <input type="checkbox"/>

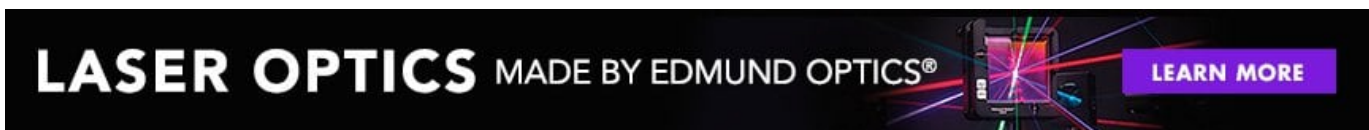
Environmental & Durability Factors	
ML-M13508-C	Durability:

Regulatory Compliance	
Compliant	RoHS 2015:
Compliant	REACH 201:
View	Certificate of Conformance:

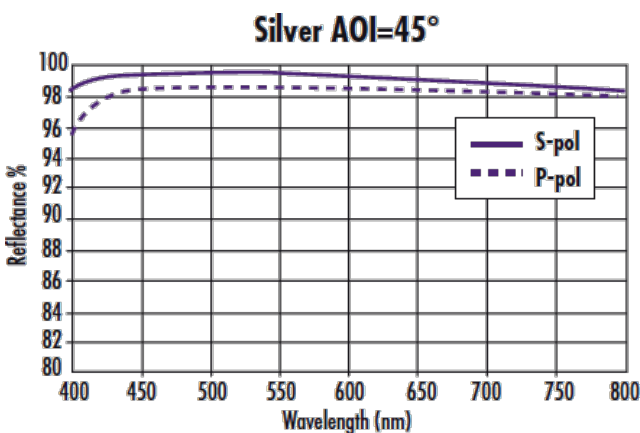
Product Details

- Ideal for Tunable Lasers and Reflecting Multiple Laser Sources
- High Reflectivity from 0 - 45° for All Polarization States
- Variety of Coating Options Available

TECHSPEC® Precision Broadband Laser Mirrors feature high reflectivity and are ideal for UV, visible, and NIR beam steering applications. The broadband dielectric enhanced silver coatings feature >98% reflectivity from 450nm to 12μm wavelengths at incident angles from 0 - 45°. These mirrors meet ML-M13508-C durability standards. [TECHSPEC® Precision Broadband Laser Mirrors](#) are ideal for demanding laser applications requiring high laser damage thresholds including laser scanning and beam steering. The mirrors have a BOROFLOAT® substrate, and are offered in 12.70, 25.40, and 50.80mm diameters.



Technical Information



Custom

Edmund Optics offers comprehensive custom manufacturing services for optical and imaging components tailored to your specific application requirements. Whether in the prototyping phase or preparing for full-scale production, we

provide flexible solutions to meet your needs. Our experienced engineers are here to assist—from concept to completion.

Our capabilities include:

- Custom dimensions, materials, coatings, and more
- High-precision surface quality and flatness
- Tight tolerances and complex geometries
- Scalable production—from prototype to volume

Learn more about our [custom manufacturing capabilities](#) or submit an inquiry [here](#).

Compatible Mounts

;