

[All Products](#) / [Optics](#) / [Prisms](#) / [High Tolerance N-BK7 Right Angle Prisms](#)

[See all 30 Products in Family](#)

TECHSPEC®

50mm, Uncoated

Please select your shipping country to view the most accurate inventory information, and to determine the correct Edmund Optics sales office for your order.

Select Your Country/Region: European Union

Submit



Stock #49-007 20+ In Stock

1

€251^{.00}

ADD TO CART

N-BK7 High Tolerance Right Angle Prism

Volume Pricing	
Qty 1-5	€251,00 each
Qty 6-25	€201,00 each
Qty 26-49	€188,00 each
Need More?	Request Quote

Prices shown are exclusive of VAT/local taxes

Product Downloads

- STEP:step
- PDF Drawing:pdf
- IGES:igs
- eDrawing:eprt
- EO Spec Sheet
- [Download All](#)

General

Type: Right Angle Prism

Physical & Mechanical Properties

Dimensional Tolerance (mm): +0/-0.1

Bevel: Protective as needed

Length of Hypotenuse (mm): 70.70

Length of Legs (mm): 50.00

Optical Properties

Angle Tolerance (arcsec): ±15

Coating: Uncoated

Substrate: **N-BK7**

Surface Quality: 40-20

Image Orientation: Left-Handed

Ray Deviation (°): 90

Wavelength Range (nm): 350 - 2200

Power (fringes) @ 632.8nm: 1.25

Irregularity (fringes) @ 632.8nm: 0.25

Regulatory Compliance

RoHS 2015: **Compliant**

Reach 219: **Compliant**

Product Details

- Ray Deviation of 90°
- Left Handed Image
- Low Arcsecond Angle Tolerance
- Additional **Right Angle Prism** Options Available

TECHSPEC® High Tolerance N-BK7 Right Angle Prisms are generally used to bend image paths or redirect light at 90°. This process produces a left-handed image, depending on the prism's orientation, the image may be inverted or reverted. Right angle prisms can also be combined for image/beam displacement. TECHSPEC® High Tolerance N-BK7 Right Angle Prisms feature low arcsecond angle tolerance and are made from precision N-BK7 for use in a variety of visible light applications. These prisms are available uncoated, with a protective aluminum overcoat, or VIS° & aluminized.

Please select your shipping country to view the most accurate inventory information, and to determine the correct Edmund Optics sales office for your order.

Select Your Country/Region:

Technical Information

Right Angle Prism Ray Path

Right Angle Prism Ray Path

Right Angle Prism Tunnel Diagram

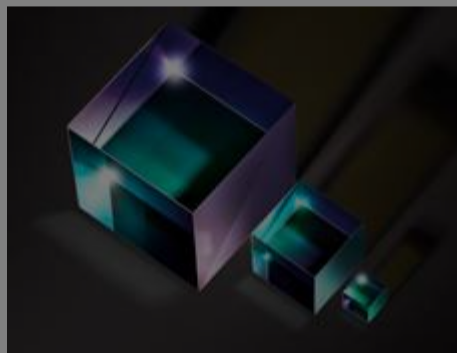
Right Angle Prism Tunnel Diagram

Frequently Purchased Together



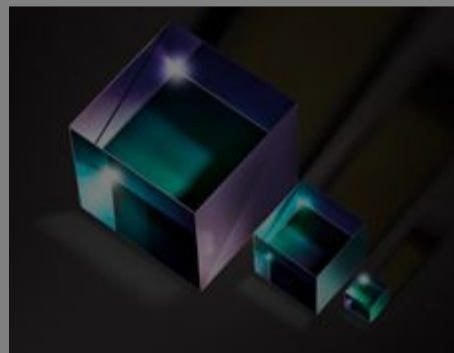
#32-332 - 15mm, Uncoated, N-BK7 Right Angle Prism
€69,50

Qty



#32-503 - 15mm 50R/50T Cube Beamsplitter
€237,00

Qty



#32-504 - 20mm 50R/50T Cube Beamsplitter
€251,00

Qty



#32-548 - 20mm, Aluminum, High Tolerance N-BK7 Right Angle Prism
€129,00

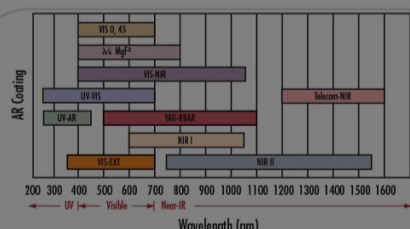
Qty



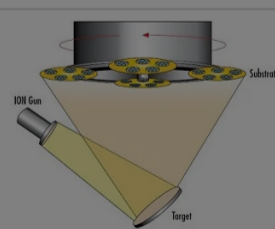
Resources

Media Type

- Application Note
- Video
- FAQ
- Glossary



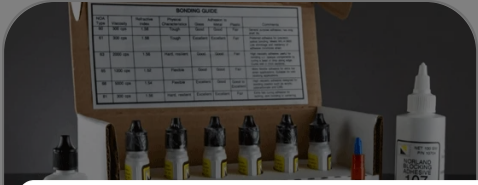
APPLICATION NOTE
Anti-Reflection (AR) Coatings



APPLICATION NOTE
An Introduction to Optical Coatings



VIDEO
Optical Prisms Review



Please select your shipping country to view the most accurate inventory information, and to determine the correct Edmund Optics sales office for your order.

Select Your Country/Region:

GLOSSARY

Equilateral
(Dispersing)
Prism

[View More](#)