

[All Products](#) / [Optics](#) / [Optical Lens](#) / [Illumination Grade Cylinder Lens](#)

[See all 227 Products in Family](#)

**TECHSPEC®**

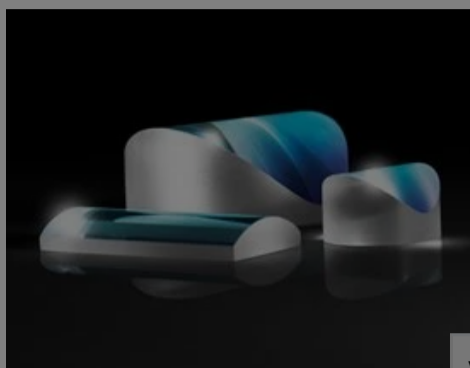
5mm H x 10mm

PCX Cylinder Lens

Please select your shipping country to view the most accurate inventory information, and to determine the correct Edmund Optics sales office for your order.

Select Your Country/Region: European Union

Submit



Stock #47-960 **11 In Stock**

1

€115<sup>,00</sup>

ADD TO CART

Volume Pricing	
Qty 1-5	€115,00 each
Qty 6-25	€104,00 each
Qty 26-49	€99,00 each
Need More?	<a href="#">Request Quote</a>

Prices shown are exclusive of VAT/local taxes

Product Downloads

- STEP:step
- PDF Drawing:pdf
- IGES:igs
- Zemax:zar
- Zemax:zmx
- eDrawing:eprt
- Code V:seq
- EO Spec Sheet
- [Download All](#)

General

Type: Cylinder Lens, Plano-Convex

Physical & Mechanical Properties

Center Thickness CT (mm): 1.00

Center Thickness Tolerance (mm): ±0.1

Dimensional Tolerance (mm): +0.0/-0.2

Dimensions (mm): 5.0 x 10.0

Edge Thickness ET (mm): 0.88

Tilt Tolerance (mm): ±0.1 over H

Wedge Tolerance (arcmin): 15.00

Optical Properties

Effective Focal Length EFL (mm): 50.00

Substrate: **N-BK7**

f/#: 10

Numerical Aperture NA: 0.05

Coating: VIS-NIR (400-1000nm)

Wavelength Range (nm): 400 - 1000

Back Focal Length BFL (mm): 49.34

Coating Specification: R<sub>abs</sub> ≤ 0.25% @ 880nm  
R<sub>avg</sub> ≤ 1.25% @ 400 - 870nm

R<sub>avg</sub> ≤ 1.25% @  
890 - 1000nm

**Focal Length Tolerance (%)**: ±3

**Radius R<sub>1</sub> (mm)**: 25.80

Please select your shipping country to view the most accurate inventory information, and to determine the correct Edmund Optics sales office for your order.

**Select Your Country/Region:**

## Regulatory Compliance

RoHS 2015: **Compliant**

Certificate of Conformance: **View**

Reach 235: **Compliant**

## Need different specs or modifications?

Edmund Optics offers comprehensive custom manufacturing services for optical and imaging components tailored to your specific application requirements. Whether in the prototyping phase or preparing for full-scale production, we provide flexible solutions to meet your needs. Our experienced engineers are here to assist—from concept to completion.

Our capabilities include:

- Custom dimensions, materials, coatings, and more
- High-precision surface quality and flatness
- Tight tolerances and complex geometries
- Scalable production—from prototype to volume

Learn more about our [custom manufacturing capabilities](#) or submit an inquiry [here](#).

## Product Details

- N-BK7 Substrate for Broadband Performance
- Cost-Effective for OEM Integration
- Multiple Coating Options Available

TECHSPEC® Illumination Grade PCX Cylinder Lenses are similar to Plano-Convex (PCX) lenses in profile, but include a portion of a cylinder instead of a sphere. These lenses focus light in one dimension and can transform a point of light into a line. TECHSPEC® Illumination Grade PCX Cylinder Lenses are available in circular and rectangular versions, along with multiple coating options. Cylinder lenses are ideal for line projection in machine vision applications or guidance systems.

**Note:** For negative focal length cylinder lenses, see our [TECHSPEC® Illumination Grade PCV Cylinder Lenses](#).

**LASER OPTICS** MADE BY EDMUND OPTICS®

**LEARN MORE**

## Technical Information

## Coating Curves

VIS-NIR (400-1000nm)



Please select your shipping country to view the most accurate inventory information, and to determine the correct Edmund Optics sales office for your order.

**Select Your Country/Region:**

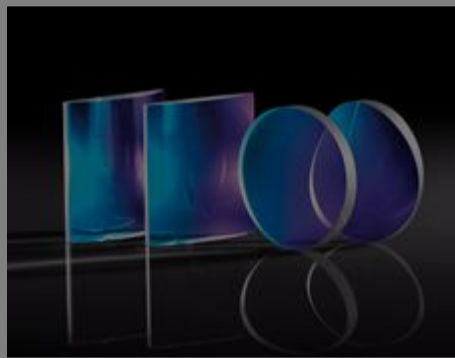
SHIFT + SELECT an area on CURVE to zoom

Please note that coating performance outside each product's specified design range is theoretical and may vary.

### Related Products



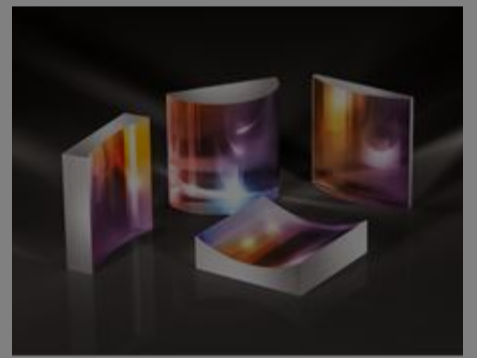
Illumination Grade PCV Cylinder Lenses



Imaging Grade PCX Cylinder Lenses



Laser Grade Laser Line Cylinder Lenses



Laser Grade Broadband Cylinder Lenses

### Frequently Purchased Together



#47-467 - 6.0mm Dia. x 30.0mm FL, VIS 0° Coated, Plano-Convex Lens  
€42,50

Qty



#47-468 - 6.0mm Dia. x 36.0mm FL, VIS 0° Coated, Plano-Convex Lens  
€42,50

Qty



#47-469 - 6.0mm Dia. x 48.0mm FL, VIS 0° Coated, Plano-Convex Lens  
€42,50

Qty



#48-648 - 3.0mm Dia. x 7.5mm FL, NIR I Coated, Plano-Convex Lens  
€68,00

Qty

## Resources

Media Type

APPLICATION NOTE

Anti-Reflection (AR) Coatings

APPLICATION NOTE

Laser Beam Shaping Overview

TRENDING IN OPTICS

- Application Note
- Trending in Optics
- Published Article
- FAQ
- Glossary
- Video

Non-Circular  
Optics for  
System  
Miniaturization

Please select your shipping country to view the most accurate inventory information, and to determine the correct Edmund Optics sales office for your order.

**Select Your Country/Region:**

■ APPLICATION NOTE

What are  
Cylinder  
Lenses?

■ APPLICATION NOTE

Considerations  
When Using  
Cylinder  
Lenses

🔗 PUBLISHED ARTICLE

Cylinder  
Lenses for  
Beam Shaping

[View More](#)