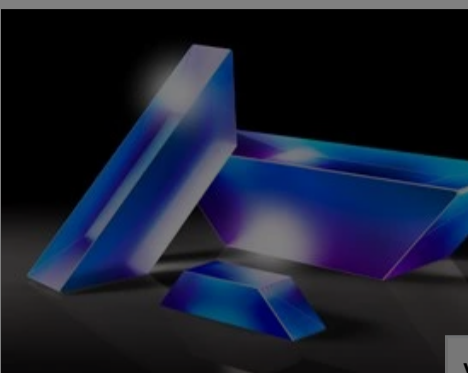


[All Products](#) / [Optics](#) / [Prisms](#) / [Dove Prisms](#)

[See all 13 Products in Family](#)

TECHSPEC® 5mm V



Please select your shipping country to view the most accurate inventory information, and to determine the correct Edmund Optics sales office for your order.

Select Your Country/Region: European Union

Submit

1

€164^{,00}

ADD TO CART

Volume Pricing	
Qty 1-5	€164,00 each
Qty 6-25	€131,00 each
Qty 26-49	€123,00 each
Need More?	Request Quote

Prices shown are exclusive of VAT/local taxes

Product Downloads

- STEP:step
- PDF Drawing:pdf
- IGES:igs
- eDrawing:eprt
- EO Spec Sheet
- [Download All](#)

General

Type: Dove Prism

Physical & Mechanical Properties

Height (mm): 5.0

Length (mm): 20.64

Dimensional Tolerance (mm): ±0.13 Legs, ±0.25 Length

Bevel: Protective as needed

Optical Properties

Coating: VIS 0° (425-675nm)

Substrate: [N-BK7](#)

Surface Quality: 60-40

Angle Tolerance (arcmin): 2.00

Image Orientation: Left-Handed

Coating Specification: $R_{avg} \leq 0.4\%$ @ 425 - 675nm

Ray Deviation (°): 0

Wavelength Range (nm): 425 - 675

Damage Threshold, Reference: [5 J/cm² @ 532nm, 10ns](#)

Power (fringes) @ 632.8nm: 0.50

Irregularity (fringes) @ 632.8nm: 0.25

Regulatory Compliance

RoHS 2015: [Compliant](#)

Certificate of Conformance: [View](#)

Need different specifications?

Edmund Optics offers comprehensive custom manufacturing capabilities to meet your specific requirements. Whether in the prototyping phase or full production, our experienced engineers are here to assist—from concept to completion.

Our capabilities include:

- Custom dimensions, materials, coatings, and more
- High-precision surface quality and flatness
- Tight tolerances and complex geometries
- Scalable production—from prototype to volume

Learn more about our [custom manufacturing capabilities](#) or submit an inquiry [here](#).

Please select your shipping country to view the most accurate inventory information, and to determine the correct Edmund Optics sales office for your order.

Select Your Country/Region:

Application
s. Our experienced

Product Details

- Image Rotation of 180°
- Left Handed Image
- Ideal for Rotation, Inversion or Displaced Retroreflection

TECHSPEC® Dove Prisms have an unusual and fascinating characteristic. If you look through the prism and rotate it around a longitudinal axis, the image rotates through twice the angle through which the dove prism itself rotates. In this use, with light incident on either of the smaller diagonal surfaces, light is reflected off the bottom surface, and the image inverted, allowing both inversion of the image, as well as rotation. Dove prisms can also be used as retroreflectors, when light is incident off the longest face. For optimal performance, use dove prisms with collimated light. The top surface of each dove prism is ground, and the longest length (specified by dimension B) features an unbeveled sharp edge.

TECHSPEC® Dove Prisms are offered uncoated, with anti-reflection coated diagonal faces or with aluminized diagonal faces. Uncoated dove prisms can be used for either image rotation or retroreflection and use total internal reflection for effective image transmission. AR coated dove prisms are specifically designed for use for image rotation and inversion, with improved throughput compared to uncoated prisms. Please note, this makes them unsuitable for use as retroreflectors. Aluminized dove prisms feature a protected aluminum coating with black Krylon paint on the diagonal faces and are ideal for displaced retroreflection. They provide a U-turn for incident laser beam light.

Technical Information

Stock No.	A	B	C	D
#32-998	5.00mm	20.64mm	5.00mm	7.07mm
#49-424				
#32-999	10.0mm	43.56mm	10.0mm	14.14mm
#49-425				
#32-553	15.00mm	62.50mm	15.00mm	21.21mm
#49-426				
#49-427	18.00mm	76.10mm	18.00mm	25.45mm
#32-554	20.00mm	79.80mm	20.00mm	28.28mm
#49-428				
#45-403	25.00mm	103.18mm	25.00mm	35.36mm

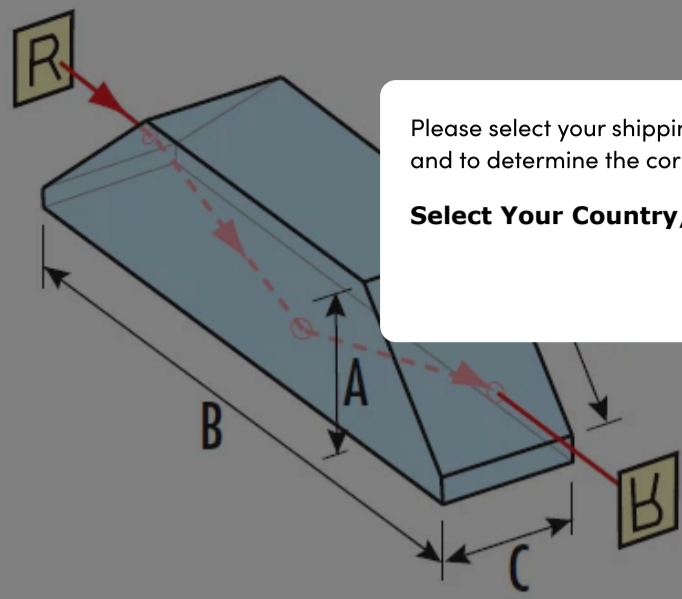
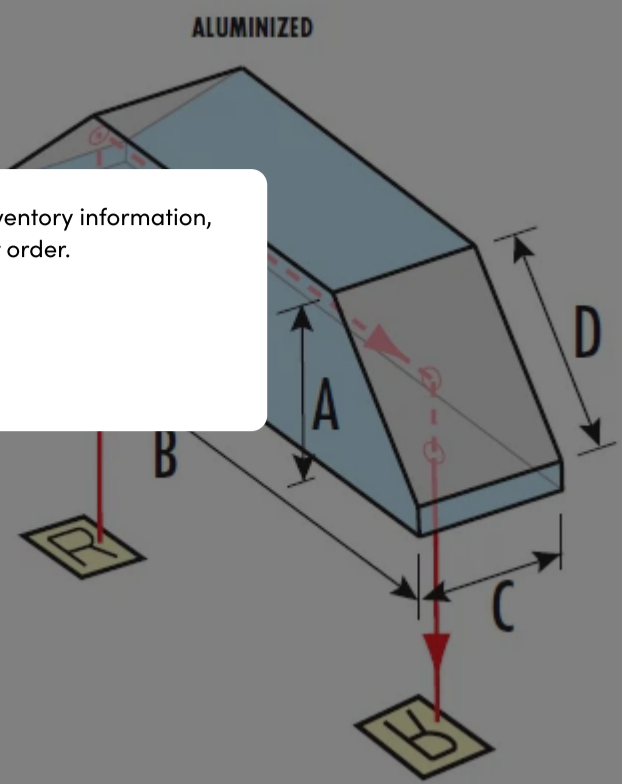


Image Rotation Ray Path

Please select your shipping country to view the most accurate inventory information, and to determine the correct Edmund Optics sales office for your order.

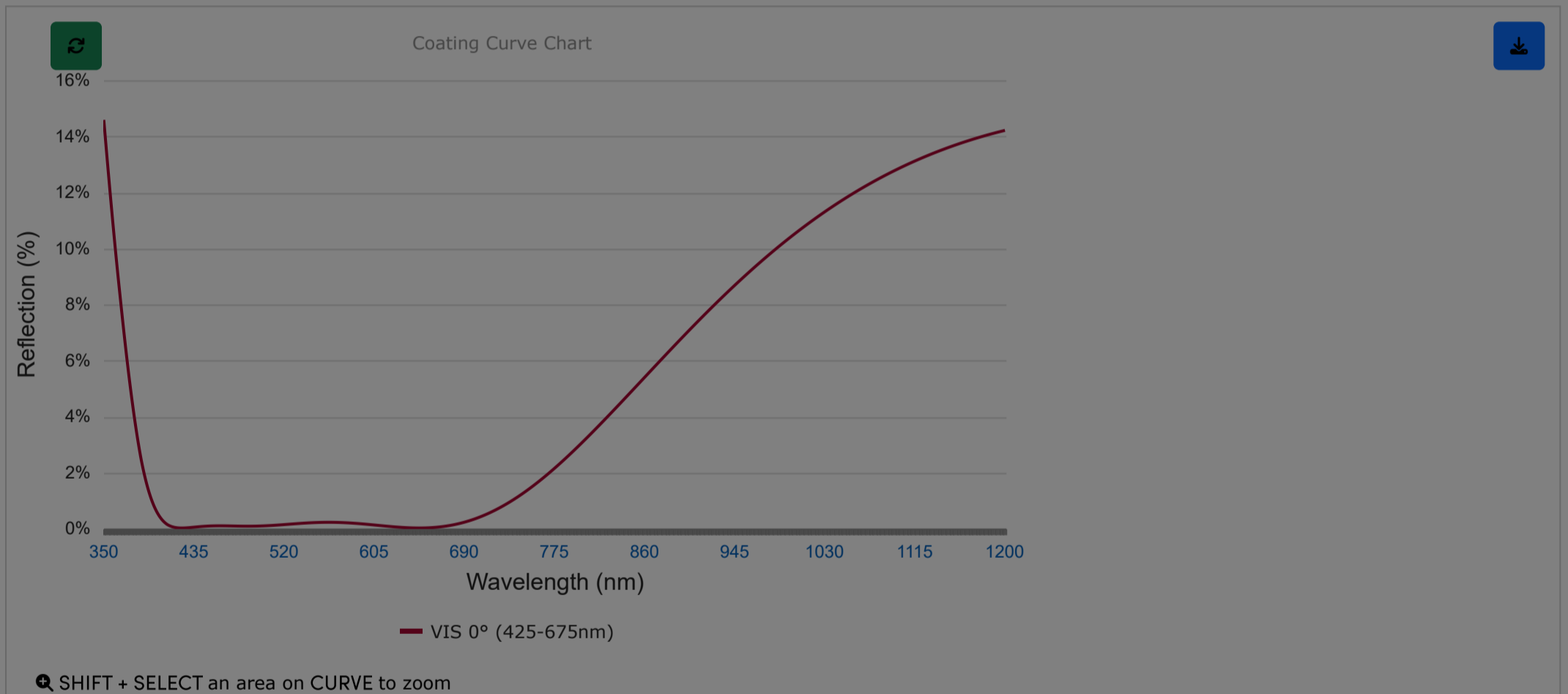
Select Your Country/Region:



Displaced Retroreflector Ray Path

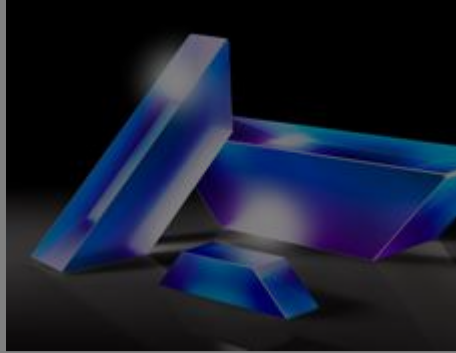
Coating Curves

VIS 0° (425-675nm)



Please note that coating performance outside each product's specified design range is theoretical and may vary.

Frequently Purchased Together



#32-998 - 5mm Uncoated Dove Prism
€148,00

Qty



#4
C

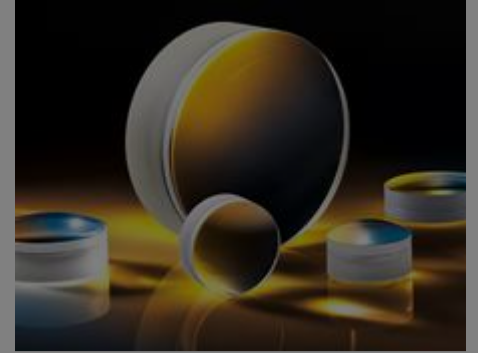
€88,50

Qty



€140,00

Qty



#47-669-INK - 12.5mm Dia. x 75mm FL, VIS 0°, Inked, Achromatic Lens
€102,00

Qty

Please select your shipping country to view the most accurate inventory information, and to determine the correct Edmund Optics sales office for your order.

Select Your Country/Region:

Resources

Media Type

- Application Note
- Video
- FAQ
- Glossary

APPLICATION NOTE

Anti-Reflection (AR) Coatings

APPLICATION NOTE

An Introduction to Optical Coatings

VIDEO

Optical Prisms Review

FAQ

I'd like to adhere two prisms together. ho...

GLOSSARY

Dove Prism

GLOSSARY

Equilateral (Dispersing) Prism

[View More](#)