

[All Products](#) / [Optomechanics](#) / [Precision Pinholes](#)

[See all 96 Products in Family](#)

# 8 μm Aperture

# n Pinhole

Please select your shipping country to view the most accurate inventory information, and to determine the correct Edmund Optics sales office for your order.

Select Your Country/Region: European Union

Submit

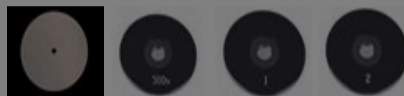


1

€100<sup>00</sup>

ADD TO CART

Unmounted Precision Pinhole



+21

Volume Pricing	
Qty 1-5	€100,00 each
Qty 6+	€89,00 each
Need More?	<a href="#">Request Quote</a>

Prices shown are exclusive of VAT/local taxes

## General

Type: Mounted

## Physical & Mechanical Properties

Outer Diameter (mm): 25.4 +0.000/-0.05

Construction: Stainless Steel

Fixed Aperture Diameter (μm): 8

Thickness (mm): 0.01 Nominal

Aperture Tolerance (μm): ±1

Aperture Centration (μm): ±125

## Threading & Mounting

Mount Thickness (mm): 2.54

## Regulatory Compliance

RoHS 2015: **Compliant**

Certificate of Conformance: [View](#)

Reach 247: **Compliant**

## Product Details

- Available in Aperture Mounts for a Secure Mechanical Support
- Pinhole Sized Ranging from 1 to 1,000 Microns
- **High Power Apertures** Available

### Unmounted Precision Pinholes

Precision Pinholes are high quality apertures centered to ±0.002" (50 microns). They are constructed of stainless steel and are 3/8" (9.5mm) in diameter. Smaller diameter pinholes will reduce energy throughput, while larger diameter pinholes will pass more spatial noise. Precision pinholes have sizes ranging from 1 to 1,000 microns. Typical applications include leak detection, aerosol studies, holography, fiber optics guides, spatial filtering, research, and more.

Use the [Precision Pinhole Mount](#) to integrate unmounted pinholes into a variety of mechanical components easily.

## Mounted Precision Pinholes

Precision Pinholes are available in aperture mounts for secure mechanical support. The mounts also fit into various optical assemblies. Each 9.5mm diameter pinhole is sealed within a 25mm diameter black-anodized aluminum mount. The mount is clearly labeled with a pinhole aperture diameter for easy identification.

**Note:** Aperture Centering to Mount  $\pm 125$  microns. Edmund Optics offers a wide selection of precision pinholes available in a range of diameters and are ideal for their aperture geometry and high edge quality. Available in industrial environments.

Please select your shipping country to view the most accurate inventory information, and to determine the correct Edmund Optics sales office for your order.

**Select Your Country/Region:**

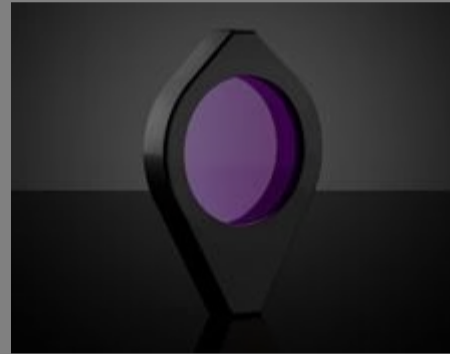
research, and more. These pinholes techniques, providing consistent circular apertures, from experimental labs to

## Technical Information

## Related Products



Precision Pinhole Mount



Compact Mirror & Lens Mounts

## Resources

### Media Type

- FAQ
- Glossary
- Application Note
- Trending in Optics
- Video

? FAQ

What do spatial filters do and how do I use them?

GLOSSARY

Spatial Filter

APPLICATION NOTE

Understanding Spatial Filters

? FAQ

Do you have any components that would...

? FAQ

Do your iris diaphragms have mounts for...

GLOSSARY

Axial Runout

[View More](#)

Please select your shipping country to view the most accurate inventory information, and to determine the correct Edmund Optics sales office for your order.

**Select Your Country/Region:**