

[All Products](#) / [Cameras](#) / [USB Cameras](#)

[See all 144 Products in Family](#)

# Allied Vision Alvium Camera, Partial Housing, S-Mount, USB 3.0

Please select your shipping country to view the most accurate inventory information, and to determine the correct Edmund Optics sales office for your order.

Select Your Country/Region: European Union

Submit

See More by [Allied Vision](#)



Stock #19-569

CONTACT US

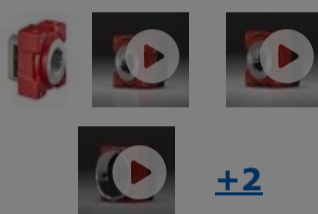
Similar Cameras

- 1 +

€670<sup>,00</sup>

ADD TO CART

Allied Vision Alvium Camera, Partial Housing, S-Mount (Front)



### Volume Pricing

Qty 1+	€670,00 each
--------	--------------

Need More?	<a href="#">Request Quote</a>
------------	-------------------------------

Prices shown are exclusive of VAT/local taxes

### Product Downloads

- Spec Sheets:pdf
- Software
- EO Spec Sheet

Note: This item requires accessories for use | [Learn More](#)

**Spectrum:** Monochrome

## General

**Type:** Monochrome Camera

**Model Number:** 1800 U-511m

**Manufacturer:** Allied Vision

**Camera Series:** Alvium

## Physical & Mechanical Properties

**Dimensions (mm):** 25 x 29 x 29 (includes connectors and lens mount)

**Weight (g):** 45

**Housing:** Partial

## Sensor

**Image Buffer:** 256KB

**Sensor Format:** 1/1.8"

**Resolution (Megapixels):** 5.10

**Frame Rate (fps):** 66.00

**Pixels (H x V):** 2,464 x 2,064

**Pixel Size, H x V (µm):** 2.74 x 2.74

**Sensing Area, H x V (mm):** 6.8 x 5.7

**Imaging Sensor:** Sony IMX547

**Type of Sensor:** Progressive Scan CMOS

**Shutter Type:** Global

**Pixel Depth:** 8/10/12 Bit

**Exposure Time:** 164µs - 10s @ 450 MBps  
163µs - 10s @ 200 MBps

**Machine Vision Standard:** USB3 Vision v1.0, GenICam

## Electrical

**Power Consumption (W):** 3.2

Please select your shipping country to view the most accurate inventory information, and to determine the correct Edmund Optics sales office for your order.

**Select Your Country/Region:**

## Hardware & Interface Connections

**Interface:** USB 3.0 Gen 1

**Connector:** USB 3.0 Gen 1, Micro-B

**Power Supply:** Power over USB or via GPIO

**GPIOs:** 4 Programmable TTL GPIOs

**Synchronization:** Hardware Trigger (GPIO) or Software Trigger

**Interface Port Orientation:** Back Panel

**GPIO Connector Type:** 7-pin JST

## Threading & Mounting

**Mount:** S-Mount (M12 x 0.5)

**Mounting Threads:** 1/4-20 and M6 with Tripod Mount Adapter [#14-156](#)

## Environmental & Durability Factors

**Operating Temperature (°C):** -20 to +65 (housing temperature)

**Storage Temperature (°C):** -20 to +85

## Regulatory Compliance

**RoHS 2015:** **Compliant**

**Certificate of Conformance:** [View](#)

**Reach 240:** **Compliant**

## Product Details

Sony IMX547

- Compact, Low Cost, High Performance Design for Machine Vision and Embedded Applications
- ALVIUM® System on Chip (SoC) Technology with Onboard Imaging Preprocessing
- Up to 24.60 MegaPixels, 1.2" Sensor Format
- [Allied Vision Alvium Right Angle USB 3.1 Cameras](#) Also Available

Allied Vision Alvium USB 3.0 Cameras feature a lightweight compact form factor with ALVIUM® System on Chip (SoC) technology, offering a comprehensive image processing library for advanced onboard image correction and preprocessing functions to relieve host computer and processor workload. In addition to smart camera operations, the unique SoC design also allows for low power consumption and ease of integration, making them ideal for next generation machine vision, robotics and embedded vision applications. The cameras feature a variety of popular Sony Pregius and On Semi CMOS sensors with high image quality, fast frame rate and USB3 Vision interface standard. The actively aligned lens mount minimizes inconsistency and variation. Allied Vision Alvium USB 3.0 Cameras feature a USB port on the back panel and are available in a variety of monochrome, color, and NIR configurations, including C-Mount, CS-Mount, and S-Mount. Full housing versions are best suited for prototyping, development and end user uses. Partial housing and board level configurations have exposed image sensor PCB without heat sinks to reduce space and facilitate system integration making them ideal for OEM embedded design.

Note: Board level versions do not have a lens mount.

## Accessories

**Note:** Compatible accessories for individual stock numbers may vary. If unsure about which accessories work with your products, please contact us [here](#).

	Title	Compare	Stock Number	Price	Buy
--	-------	---------	--------------	-------	-----

**MORE+**

C-Mount to M12 Lens Adapter w/Oring

**#59-241**

**€46,75**  
[Request Quote](#)

**3 In Stock**

1



	Title	Compare	Stock Number	Price	Buy
<a href="#">MORE+</a>	C-Mount to M12 Lens Adapter		#53-675	€32,75	20+ In Stock <input type="text" value="1"/>
<a href="#">MORE+</a>	C-Mount to M12 Adapter				20+ In Stock <input type="text" value="1"/>
<a href="#">MORE+</a>	5mm Spacer to convert Cameras to C-Mount			Request Quote	20+ In Stock <input type="text" value="1"/>
<a href="#">MORE+</a>	AVT Type-A to Micro-B, USB 3.0 Locking Cable, 3m		#14-903	€41,00 Request Quote	20+ In Stock <input type="text" value="1"/>
<a href="#">MORE+</a>	Type-A to Micro-B, USB 3.0 Locking Cable, 8m		#34-212	€92,00 Request Quote	17 In Stock <input type="text" value="1"/>
<a href="#">MORE+</a>	JST 7-pin Cable without Screw Lock, 0.4m Length		#14-154	€12,00 Request Quote	CONTACT US <input type="text" value="1"/>
<a href="#">MORE+</a>	JST 7-pin Cable with Screw Lock, 5m Length		#14-155	€29,00 Request Quote	20+ In Stock <input type="text" value="1"/>
<a href="#">MORE+</a>	M6 and 1/4-20 Mounting Plate for Alvium		#14-156	€18,00 Request Quote	20+ In Stock <input type="text" value="1"/>

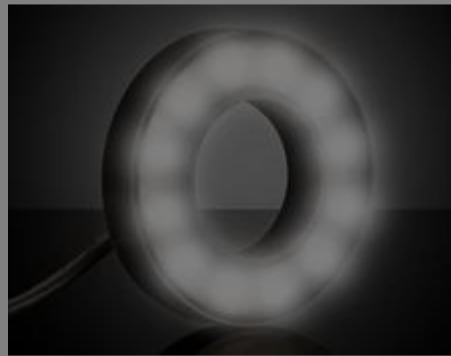
Please select your shipping country to view the most accurate inventory information, and to determine the correct Edmund Optics sales office for your order.

**Select Your Country/Region:**

## Related Products



Imaging Lenses



Machine Vision Lighting

## Imaging Lens Selector

Imaging

- Factory Automation
- Telecentric
- M12

- Custom Sensor
- Camera Model

Camera Model:

Number of Horizontal Pixels:

**1**

Number of Vertical Pixels:

**2**

Pixel Size (µm):

**3**

Working Distance (mm):

Please select your shipping country to view the most accurate inventory information, and to determine the correct Edmund Optics sales office for your order.

**Select Your Country/Region:**

4

Horizontal Field of View  
(mm):

5



**Disclaimer:** Values represent theoretical values from lens design software. Actual lens performance varies due to manufacturing tolerances.

## Resources

### Media Type

- Application Note
- Video
- Published Article
- FAQ
- Glossary
- Technical Tool

APPLICATION NOTE

Sensor  
Performance  
and  
Limitations

APPLICATION NOTE

Imaging.  
Electronics  
101: Basics of  
Digital...

APPLICATION NOTE

Imaging.  
Electronics  
101: Camera  
Resolution fo...

APPLICATION NOTE

Imaging.  
Electronics  
101: Understandi...

VIDEO

How Do  
Cameras  
Work?

PUBLISHED ARTICLE

Advancements  
in Short Wave  
Infrared  
Sensors

[View More](#)

Please select your shipping country to view the most accurate inventory information, and to determine the correct Edmund Optics sales office for your order.

**Select Your Country/Region:**