

[All Products](#) / [Imaging Lenses](#) / [InfiniTube™ Standard Systems](#)

[See all 18 Products in Family](#)

Collector I (Low

See More by [Infinity Photo-Optical](#)

Please select your shipping country to view the most accurate inventory information, and to determine the correct Edmund Optics sales office for your order.

Select Your Country/Region: European Union

Submit



Stock #59-721 [CONTACT US](#)

1

€335⁰⁰

ADD TO CART

Standard (with no In-Line Attachment),
InfiniTube, #56-125



Volume Pricing

Qty	€335,00
1+	each
Need More?	Request Quote

Prices shown are exclusive of VAT/local taxes

General

Type: Lens Accessory

Regulatory Compliance

RoHS 2015: **Compliant**

Reach 224: **Compliant**

Certificate of Conformance: [View](#)

Product Details

- Direct to Video C-Mount for 2/3" and Smaller Sensor Cameras ([InfiniTube™ FM Series](#) for 1/2")
- [Mitutoyo](#) and [Achromid™](#) Objectives Sold Separately
- Internal Focusing
- See Description Tab for Required Components

This in-line assembly unit is used to mount [Mitutoyo](#) or [Achromid™](#) long working-distance objectives to C-mount cameras, yielding magnifications not possible with ordinary video lenses, such as 50X magnification. The InfiniTube™ system can be configured in a variety of fashions. It can be utilized alone (InfiniTube™ Standard [#56-125](#)) for applications where illumination is provided from another source such as a backlight or directional illumination.

The first in-line attachment ([#56-126](#)) has been designed for high performance with objectives having a magnification of 10X or below and is not suggested for use with higher magnification objectives. The second in-line unit ([#56-191](#)) has been designed to work with increased efficiency when used with magnifications of 10X or higher, but can be utilized with all magnifications. An InfiniTube™ In-line Assembly ([#54-590](#)) is also offered, comprised of the InfiniTube™ Standard and the higher magnification in-line attachment. This Assembly can be used with all magnifications. A filter holder, which attaches to the InfiniTube™ itself, can be added to the systems to introduce 25mm diameter filters. These lenses are commonly used in microscopy and wafer inspection.

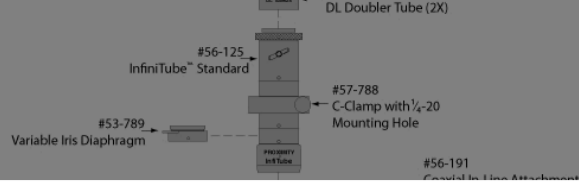
By utilizing an in-path beamsplitter and side-port illumination tube with collimating optics, the In-Line Assembly ([#54-590](#)) provides incident illumination parallel to the optical axis (coaxial). Coaxial illumination requires an optional [Fiber Optic Illuminator](#) and a 1/4" diameter [Fiber Optic Light Guide](#).

A version of the InfiniTube™ is specifically designed only for Zeiss ICS-corrected objectives ([#58-538](#), 160mm tube lens design). Shorter than the Standard model, this model has color-compatible correction for use exclusively with Zeiss ICS objectives. The RMS adapter ([#53-786](#)) is required to connect [#58-538](#) to the Zeiss EC Plan-Neofluar® objectives.

The RMS adapter ([#53-786](#)) is required to connect [#58-538](#) to the Zeiss ICS objectives. Since even the slightest vibration will affect such small fields-of-view seen with the InfiniTube™ we recommend [vibration isolation equipment](#) when using objectives greater than 10X in magnification. We also recommend the use of a focusing mechanism (such as the Rack and Pinion Movement mount [#54-794](#)) when using the lens alone.

Mounting clamp ([#57-788](#)) is included with [#54-590](#), [#56-125](#) and [#58-538](#). Note that an objective, objective adapter, light guide, and illuminator are not included.

Technical Information



Please select your shipping country to view the most accurate inventory information, and to determine the correct Edmund Optics sales office for your order.

Select Your Country/Region:



*Note: IF-1, IF-2 and IF-3 are not suitable for use with Coaxial In-Line Attachment (#56-126).

#54-562	
Item	Stock No.
InfiniTube In-Line Assembly Unit	#54-590
Hitachi KP-D20B Camera	#55-837
15.1" LCD Monitor (US Version Only)	#56-522
Y-C Cable (6 ft.)	#39-255
Mitutoyo/Achrovid™ Objective Adapter	#53-787
MI-150 Fiber Optic Illuminator	#55-718
Fiber Optic Light Guide (48" L)	#39-367
Fiber Optic Adapter	#38-944
Standard Boom Stand	#54-120
Rack & Pinion Mounting Plate	#54-123

Accessories

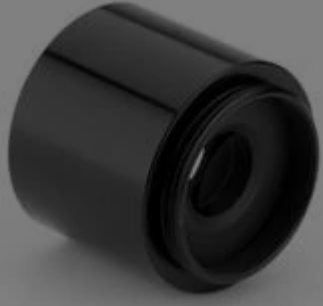
Note: Compatible accessories for individual stock numbers may vary. If unsure about which accessories work with your products, please contact us [here](#).

	Title	Compare	Stock Number	Price	Buy
MORE+	Small Mounting Clamp		#16-144	€119,00 Request Quote	5 In Stock <input type="text" value="1"/>
MORE+	25mm Dia. Filter Holder/Retainer		#16-089	€111,00 Request Quote	1 In Stock <input type="text" value="1"/>
MORE+	2X DL Tube for Infinity Lenses		#39-686	€275,00 Request Quote	5 In Stock <input type="text" value="1"/>
MORE+	Mitutoyo/Achrovid Objective Adapter (M26 to M27)		#53-787	€97,00 Request Quote	3 In Stock <input type="text" value="1"/>
MORE+	Olympus UIS/Zeiss ICS Objective Adapter (RMS to M27)		#53-786	€97,00 Request Quote	2 In Stock <input type="text" value="1"/>
MORE+	Nikon CF160 Objective Adapter (M25)		#54-589	€97,00 Request Quote	1 In Stock <input type="text" value="1"/>
MORE+	Collector I (Low Power)		#59-721	€335,00 Request Quote	CONTACT US <input type="text" value="1"/>
MORE+	Collector II (High Power)		#59-722	€335,00 Request Quote	CONTACT US <input type="text" value="1"/>

Frequently Purchased Together

Please select your shipping country to view the most accurate inventory information, and to determine the correct Edmund Optics sales office for your order.

Select Your Country/Region:



#39-686 - 2X DL Tube for
Infinity Lenses
€275,00

#46-142 - 2X Mitutoyo Plan
Apo Infinity Corrected Long
WD Objective
€1.215,00

#46-144 - 10X Mitutoyo Plan
Apo Infinity Corrected Long
WD Objective
€1.145,00

#53-787 - Mitutoyo/Achrovid
Objective Adapter (M26 to M27)
€97,00

Resources

Media Type

Trending in Optics

↑ TRENDING IN OPTICS

Cinema
Lenses, The
Age of
Streamina....