

## Deluxe Adjustable 1/4-20 Mounting Plate



Deluxe Adjustable 1/4-20 Mounting Plate, #54-123

Stock #54-123 **CLEARANCE** 2 In Stock

- 1 + €735<sup>00</sup>

**ADD TO CART**

### Volume Pricing

Qty 1+	€735,00 each
Need More?	<a href="#">Request Quote</a>

ⓘ Prices shown are exclusive of VAT/local taxes

### Product Downloads

### General

Mounting Adapter **Type:**  
Compatible Post Diameter (mm):  
19.05 (3/4")

### Physical & Mechanical Properties

3.8 L x 2.52 W x 1.5 T **Dimensions (inches):**  
**Length (inches):**

2.00 **Travel (inches):**

### Threading & Mounting

**Mounting Threads:**  
1/4-20

### Regulatory Compliance

**Certificate of Conformance:**  
[View](#)

## Product Details

- Standard and Deluxe Versions Available
- 1/4-20 Mounting
- Compatible with our Most Popular Line of Boom Stands

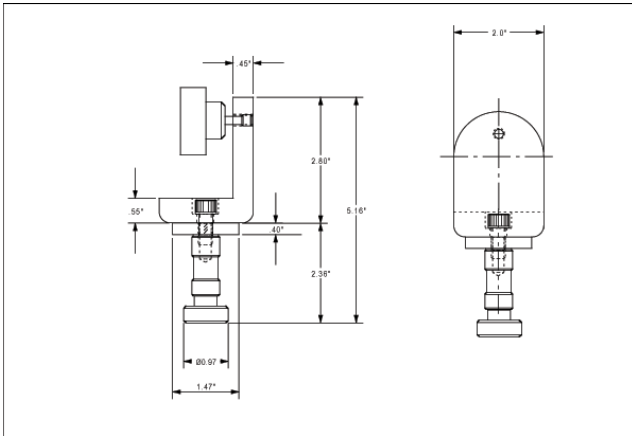
**#54-122** adapter can be used to mount a wide variety of cameras, lenses, microscopes, and lighting. Components are easily mounted via its 1/4-20 mounting screw. 2.8" L x 2.0" W x 0.45" T.

**#54-123** deluxe version of the base plate has the same 1/4-20 screw type, but includes a rack and pinion movement with tilt adjustment. The rack and pinion has a 2" travel. 3.8" L x 2.52" W x 1.5" T.

**#54-124** post adapter can be used to attach mounts designed to fit on 3/4 inch posts. Allows tilt adjustment. This is required to mount our 68mm (**#39-357**) and 50mm (**#03-609**) thru-hole rack and pinions and our **1/4-20 movements**. Adapter is 7" long. Post 4" long x 0.75" O.D.

All adapters are compatible with the following boom stands: [Articulating Arm Boom Stand](#), [Standard Boom Stand](#), and [Ball Bearing Boom Stand](#).

## Technical Information



#54-123