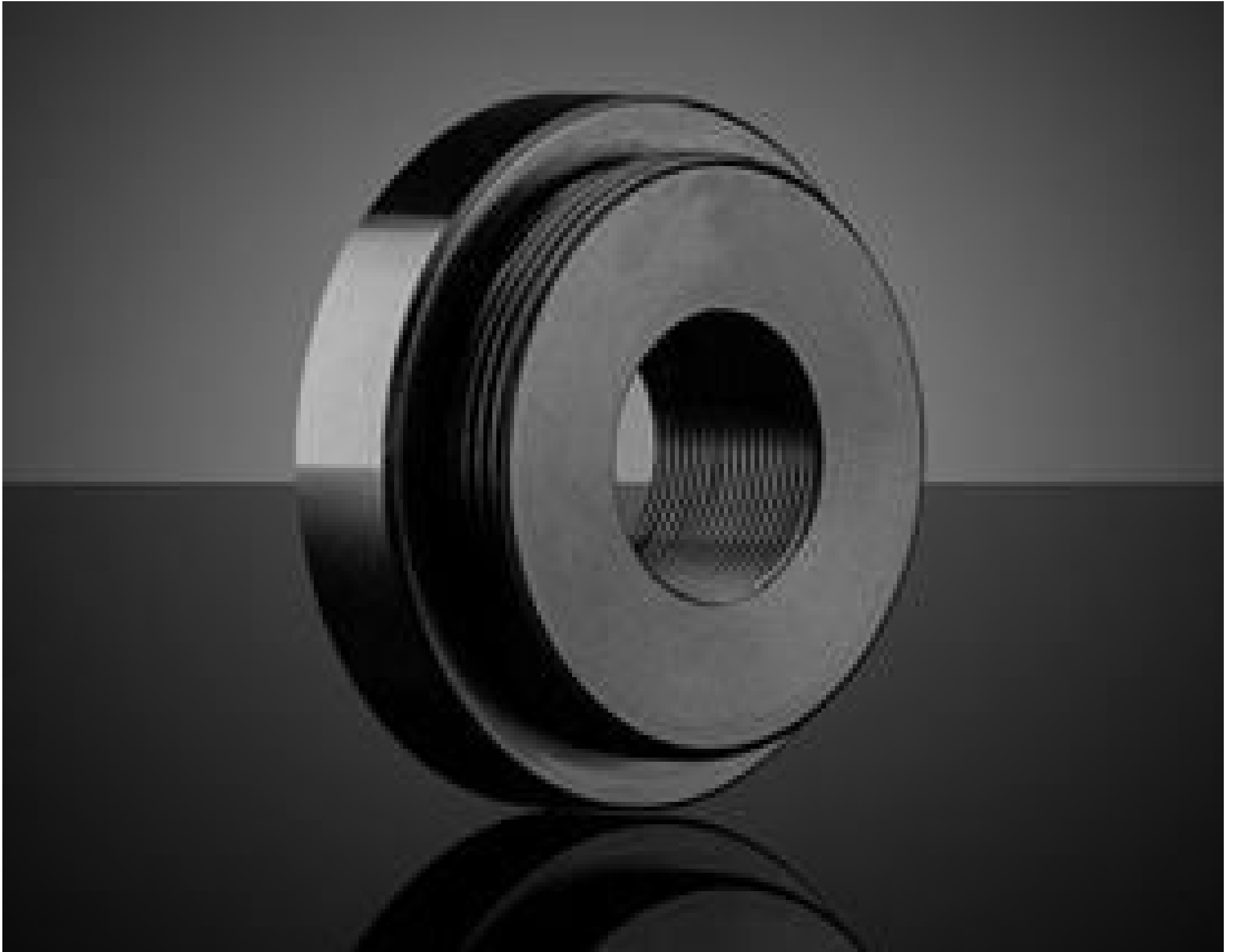


[See all 10 Products in Family](#)

**TECHSPEC® S-Mount Female to C-Mount Male Step-Down Adapter**



Female S to Male C Adapter, #63-945

Stock **#63-945** **20+ In Stock**

⊖ 1 ⊕ €59.<sup>50</sup>

**ADD TO CART**

Volume Pricing	
Qty 1-4	€59,50 each
Qty 5-9	€53,00 each
Qty 10-25	€49,00 each
Need More?	<a href="#">Request Quote</a>

ⓘ Prices shown are exclusive of VAT/local taxes

Product Downloads

**General**

Thread Adapter **Type:**

Thread Adapter **Function:**

**Physical & Mechanical Properties**

Extension Length (mm):

6.0

**Total Length (mm):**

10.0

**Clear Aperture CA (mm):**

12.0

**Construction:**

Black Anodized Aluminum (6061-T6)

**Outer Diameter (mm):**

30.0

## Threading & Mounting

**Thread Type:**

S-Mount to C-Mount

**Thread Termination:**

Female to Male

## Regulatory Compliance

**RoHS 2015:**

[Compliant](#)

**Certificate of Conformance:**

[View](#)

**REACH 241:**

[Compliant](#)

## Product Details

- Adapt All Available Tube System Thread Types to One Another
- Low Profile Design to Minimize Extension Length
- Black Anodized Aluminum Construction

TECHSPEC® C, S, and T-Mount Thread Adapters ensure that all [Tube System](#) thread types are compatible with one another. This includes C, S, and T-Mount threads, TECHSPEC Multi-Element Tube System threads (M29 x 0.75), ID1 (1.035" x 40 TPI, equivalent to SM1 thread specifications), and ID05 (0.535" x 40 TPI, equivalent to SMD5 thread specifications). All thread adapters have a low-profile design to minimize extension length. They also have a black anodized aluminum construction to ensure minimal reflections within a system. TECHSPEC C, S, and T-Mount Thread Adapters are ideal for system expansion and work with any optical component that uses the supported thread types.