

[All Products](#) / [Cameras](#) / [USB Cameras](#)

[See all 103 Products in Family](#)

IDS U3-38C0XC

uEye+ XCP Camera

See More by [IDS Imaging Development Systems](#)

Please select your shipping country to view the most accurate inventory information, and to determine the correct Edmund Optics sales office for your order.

Select Your Country/Region: European Union

Submit



1

€280^{,00}

ADD TO CART

IDS Imaging uEye+ USB3 Cameras



Volume Pricing	
Qty 1+	€280,00 each
Need More?	Request Quote

Prices shown are exclusive of VAT/local taxes

Product Downloads

- User Manual
- Software
- EO Spec Sheet

Spectrum: Monochrome

General

Type: Monochrome Camera	Model Number: U3-38C0XCP-M-GL
Manufacturer: IDS Imaging Development Systems	Camera Series: uEye+ XCP

Physical & Mechanical Properties

Dimensions (mm): 29 x 29 x 17 (excludes connectors and lens mount)	Weight (g): 59
Housing: Full	

Sensor

Image Buffer: Not Specified	Sensor Format: 1/2.8"
Resolution (Megapixels): 2.16	Frame Rate (fps): 88.00
Pixels (H x V): 1,936 x 1,096	Pixel Size, H x V (µm): 2.90 x 2.90
Sensing Area, H x V (mm): 5.614 x 3.178	Imaging Sensor: Sony IMX662
Type of Sensor: Progressive Scan CMOS	Shutter Type: Rolling
Pixel Depth: 12 bit	Exposure Time: 0.009ms - 2000ms
Dynamic Range (dB): 74.00	Machine Vision Standard: USB3 Vision

Electrical

Power Consumption (W): 0.5 - 1.2	
---	--

Hardware & Interface Connectivity

Interface: USB 3.0

Connector: USB 3.0 micro-B, screwable

Power Supply: Power over USB

Please select your shipping country to view the most accurate inventory information, and to determine the correct Edmund Optics sales office for your order.

Select Your Country/Region:

Threading & Mounting

Mount: C-Mount

Environmental & Durability Factors

Operating Temperature (°C): 0 to +55

Storage Temperature (°C): -20 to +60

Regulatory Compliance

Certificate of Conformance: [View](#)

Product Details

Sony IMX662

- Standard (SE), Compact (CP), and Ultra Compact (XCP) Housing Options Available
- C-Mount with Large Format CMOS Sensors up to 1.1"
- Up to 20.44MP Resolution with Framrates up to 396fps

IDS Imaging uEye CP/XCP/SE USB3 Cameras utilize **IDS Imaging's peak SDK platform** that supports GeniCam and USB3 Vision standards for easy software development and integration. The CP cameras are the industry standard size of 29 x 29 x 29mm and work for almost any application. The XCP cameras have an ultra-compact size of 29 x 29 x 17mm and are an excellent option for price-sensitive, single-camera applications. The SE cameras have a larger housing size of 34 x 44 x 47mm to allow for exceptional heat management and are ideal for noise and heat-sensitive applications. IDS Imaging uEye CP/XCP/SE USB3 Cameras are ideal for manufacturing, industrial, and automation applications.

Accessories

Note: Compatible accessories for individual stock numbers may vary. If unsure about which accessories work with your products, please contact us [here](#).

	Title	Compare	Stock Number	Price	Buy
MORE+	3m Standard I/O Cable, Female Termination		#74-506	€63,00 Request Quote	5 In Stock <input type="text" value="1"/>

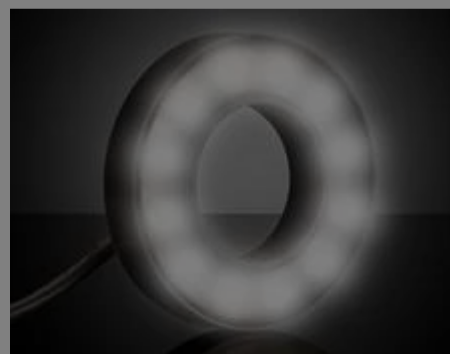
Related Products



IDS Imaging Cameras



Imaging Lenses

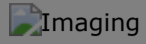


Machine Vision Lighting



Teledyne FLIR IIS
Oryx@10GigE Cameras

Imaging Lens Selector



Please select your shipping country to view the most accurate inventory information, and to determine the correct Edmund Optics sales office for your order.

Select Your Country/Region:

Factory Automation

Telecentric

M12

Custom Sensor

Camera Model

Camera Model:



Number of Horizontal Pixels:

1 1936

Number of Vertical Pixels:

2 1096

Pixel Size (µm):

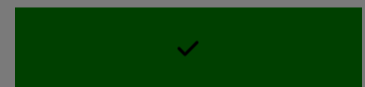
3 2.9

Working Distance (mm):

4

Horizontal Field of View (mm):

5



Disclaimer: Values represent theoretical values from lens design software. Actual lens performance varies due to manufacturing tolerances.

Frequently Purchased Together



#33-301 - 6mm UC Series Fixed Focal Length Lens
€260,00



#35-088 - 1/4-20 Mounting Adapter for IDS Imaging USB 3/GigE/PoE Camera - Rev 2
€45,00



#49-194 - 25mm Dia. Protected Silver, λ/4 Mirror
€96,50



#55-292 - Laser Detection Card IR
€108,00



Please select your shipping country to view the most accurate inventory information, and to determine the correct Edmund Optics sales office for your order.

Select Your Country/Region:

Media Type

- Application Note
- Video
- Published Article
- FAQ
- Glossary
- Technical Tool

APPLICATION NOTE

Sensor Performance and Limitations

APPLICATION NOTE

Imaging Electronics 101: Basics of Digital...

APPLICATION NOTE

Imaging Electronics 101: Camera Resolution fo...

APPLICATION NOTE

Imaging Electronics 101: Understandi...

VIDEO

How Do Cameras Work?

PUBLISHED ARTICLE

Advancements in Short Wave Infrared Sensors

[View More](#)