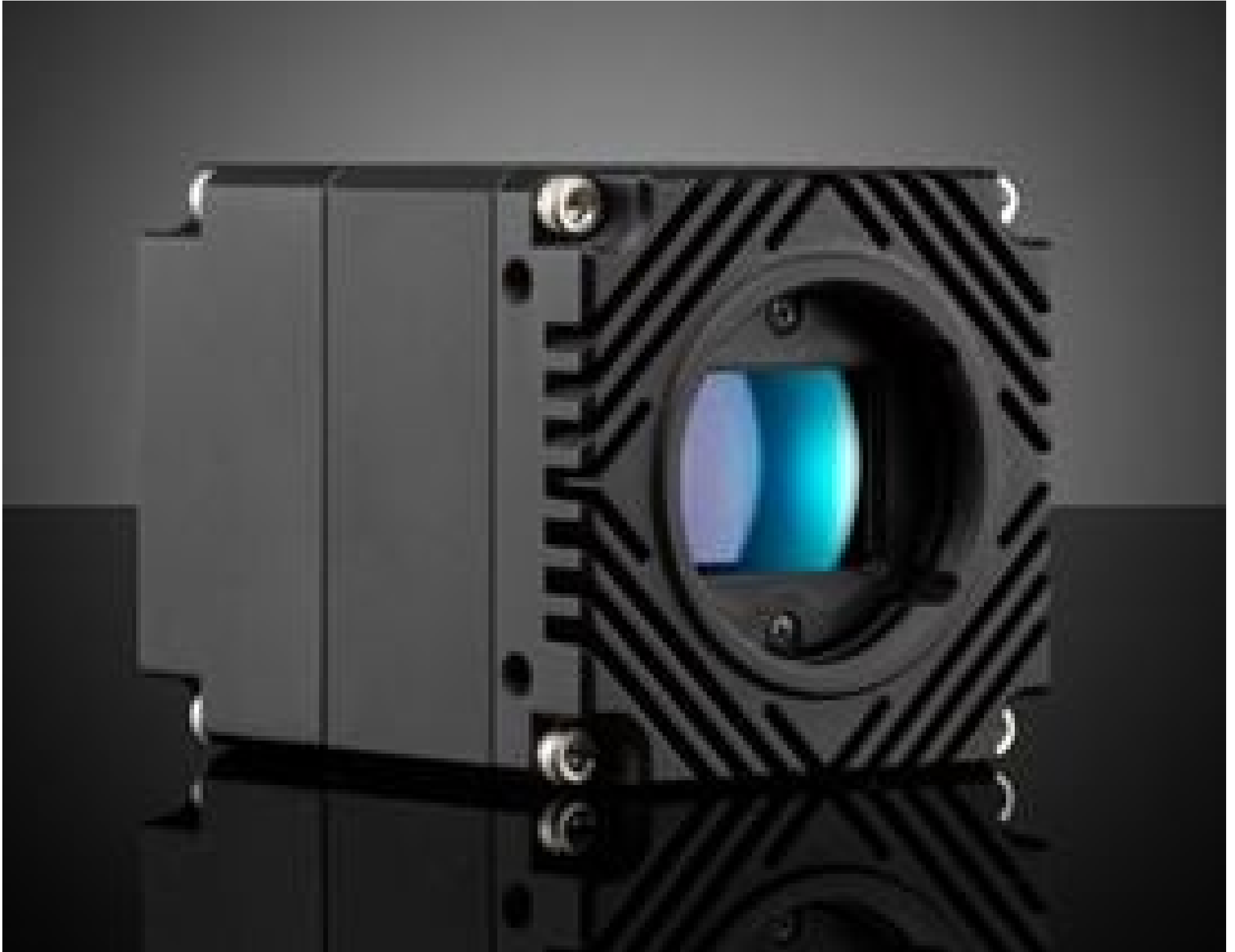


Lucid Vision Labs Atlas™ ATL314S-MNL, Sony IMX342, 31.4MP, Monochrome Camera

See More by [LUCID Vision Labs™](#)



LUCID Vision Labs Atlas™ Power over Ethernet (PoE) 5GBASE-T (5GigE) Cameras

Stock **#25-129** **1 In Stock**

⊖ 1 ⊕ €6.130⁰⁰

ADD TO CART

Volume Pricing	
Qty 1+	€6.130,00 each
Need More?	Request Quote

ⓘ Prices shown are exclusive of VAT/local taxes

Product Downloads

SPECIFICATIONS

General

Monochrome Camera **Type:**

ATL314S-MNL **Model Number:**

Lucid Vision Labs **Manufacturer:**

Atlas™ **Camera Series:**

Monochrome **Spectrum:**

Physical & Mechanical Properties

55 x 55 x 65 (excludes connectors) **Dimensions (mm):**

240 **Weight (g):**

Full **Housing:**

Sensor

380MB **Image Buffer:**

APS-C **Sensor Format:**

31.40 **Resolution (Megapixels):**

17.90 **Frame Rate (fps):**

6,464 x 4,852 **Pixels (H x V):**

3.45 x 3.45 **Pixel Size, H x V (µm):**

22.30 x 16.74 **Sensing Area, H x V (mm):**

Sony IMX342 **Imaging Sensor:**

Progressive Scan CMOS **Type of Sensor:**

Global **Shutter Type:**

8/10/12 Bit **Pixel Depth:**

47µs - 10s (Normal);
2µs - 32µs (Short Mode) **Exposure Time:**

0 - 48 **Dynamic Range (dB):**

GigE Vision v2.0 **Machine Vision Standard:**

Electrical

8 (External Power Supply)
8.5 (PoE) **Power Consumption (W):**

Hardware & Interface Connectivity

5GigE (PoE) **Interface:**

5GigE, M12 **Connector:**

Power over Ethernet (PoE) or via GPIO with 12-24VDC Power Supply **Power Supply:**

1 opto-isolated input, 1 opto-isolated output, 2 non-isolated bi-directional ports **GPIOs:**

Hardware Trigger (GPIO), Software Trigger, or PTP (IEEE 1588) **Synchronization:**

Back Panel **Interface Port Orientation:**

8-pin M8 **GPIO Connector Type:**

Threading & Mounting

No Lens Mount **Mount:**

¼-20 with Tripod Mount Adapter [#13-751](#) **Mounting Threads:**

Environmental & Durability Factors

-20 to +55 **Operating Temperature (°C):**

-30 to +60 **Storage Temperature (°C):**

Regulatory Compliance

[View](#) **Certificate of Conformance:**

PRODUCT DETAILS

- 5GBASE-T (5GigE) Ethernet Interface
- 2.8 to 31.4 Megapixel Sensors
- Compact 55 x 55 x 70mm Design
- TFL-Mount Compatible with [TECHSPEC® CA Series FFL Lenses](#)

LUCID Vision Labs Atlas™ Power over Ethernet (PoE) 5GBASE-T (5GigE) Cameras have a small footprint and feature large format, high resolution sensors with up to 31.4MP at 17.9fps. During manufacturing, their imaging sensors are actively aligned to minimize sensor tilt and rotation, resulting in sharp and crisp images even in the corners. The 5GigE Ethernet interface provides up to 5X faster speeds than GigE for applications requiring high bandwidth. These cameras also feature a TFL-Mount that is easily adaptable to F-Mount. LUCID Vision Labs Atlas Power over Ethernet (PoE) 5GBASE-T (5GigE) Cameras are ideal for industrial applications including [factory automation](#), autonomous robotics, and biometrics.
