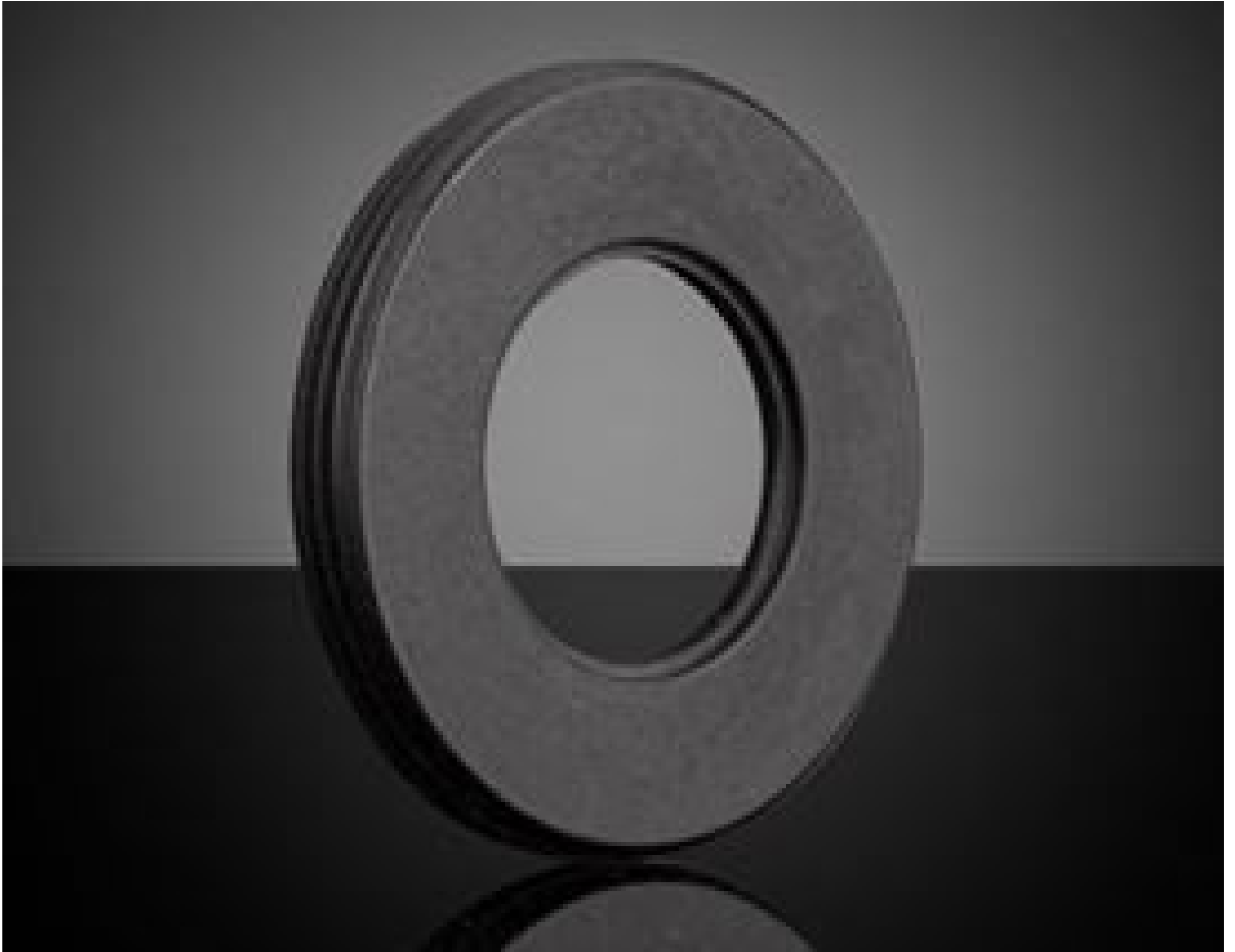


[See all 26 Products in Family](#)

TECHSPEC® M23.2 Retaining Ring Pair for 12.5mm Diameter Optics



M23.2 Retaining Ring Pair for 12.5mm Diameter Optics, #85-561

Stock **#85-561** **1 In Stock**

⊖ 1 ⊕ €36⁷⁵

ADD TO CART

Volume Pricing

Qty 1+	€36,75 each
Need More?	Request Quote

ⓘ Prices shown are exclusive of VAT/local taxes

Product Downloads

General

Fixed **Function:**

Retaining Ring **Note:**

Physical & Mechanical Properties

3.00 **Length (mm):**

Clear Aperture CA (mm):

Black Anodized Aluminum **Construction:**

Threading & Mounting

12.5 **Size of Compatible Optics (mm):**

M23.2 x 0.75 **Thread Type:**

Regulatory Compliance

[Compliant](#) **RoHS 2015:**

[View](#) **Certificate of Conformance:**

[Compliant](#) **REACH 241:**

Product Details

- Fit within Inner Diameter of [Cage System Plates](#)
- Use with Retaining Ring Pairs to Secure Optics
- Join Multiple with Adjustable Length Tubes and Thread Adapters

TECHSPEC® M23.2 and M27.5 Fixed Tubes and Retaining Rings feature black anodized aluminum construction. The fixed extension tubes are ideal for covering portions of the cage system. Each fixed extension tube is designed to fit within the inner diameter of a cage system plate, and feature either M23.2 x 0.75 or M27.5 x 0.75 female threading throughout the entire length of the tube. TECHSPEC® M23.2 and M27.5 Fixed Tubes and Retaining Rings, when paired correctly, can be used to secure optics within the extension tube, while [adjustable length tubes](#) and [thread adapters](#) can be used to connect fixed extension tubes for building customized optical assemblies. M23.2 and M27.5 Tube System Retaining Rings feature a thin, 3mm thickness. They are sold in pairs and are ideal for securing optics within extension tubes. Each retaining ring features an optic shelf which centers the optic within when sandwiched between retaining ring pairs.

Accessories

[#85-582](#) threads into a M23.2 x 0.75 standard tube to easily mount a plate beamsplitter. [#85-539](#) fits within the inner diameter of [cage system plates](#); it also threads into a M23.2 x 0.75 standard tube.