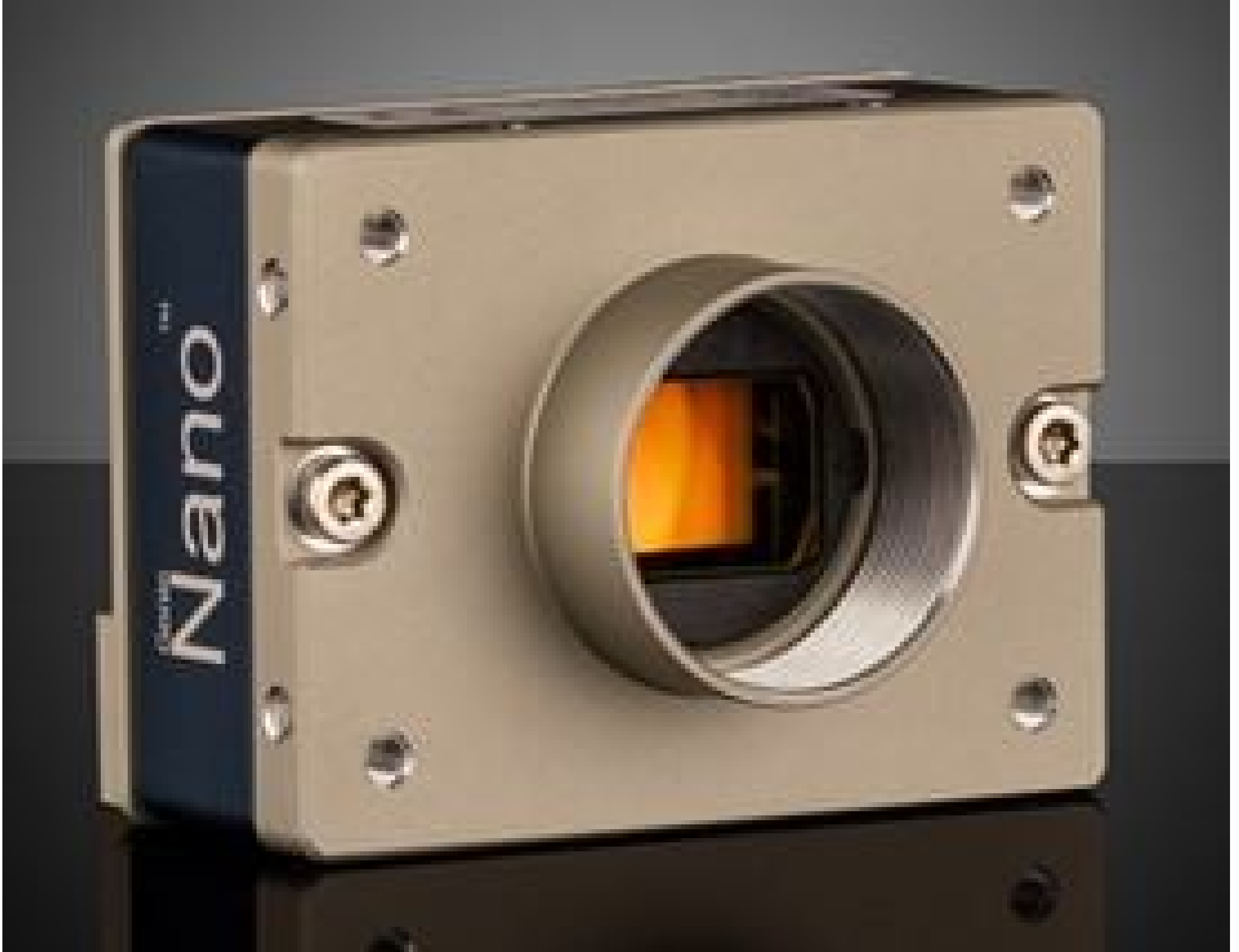


[See all 21 Products in Family](#)

M2450, 2/3" Monochrome, Teledyne DALSA Genie Nano 5GigE PoE Camera (Recertified 05-P)

See More by [Teledyne DALSA](#)



Teledyne DALSA Genie™ Nano 5GigE Cameras (Front)



Stock #16-026-RCD-05P **RECERTIFIED** **1 In Stock**

[Similar Cameras](#)

− 1 + €1.390⁰⁰

ADD TO CART

Volume Pricing	
Qty 1+	€1.390,00 each
Need More?	Request Quote

Prices shown are exclusive of VAT/local taxes

Product Downloads

Spectrum:
Monochrome

General

Type:
Monochrome Camera

G5-GM80-M2450	Model Number:
Teledyne DALSA	Manufacturer:
Genie Nano-5GigE	Camera Series:

Physical & Mechanical Properties

59 x 44 x 42.6 (includes connectors and lens mount)	Dimensions (mm):
124	Weight (g):
Full	Housing:

Sensor

450MB	Image Buffer:
2/3"	Sensor Format:
5.10	Resolution (Megapixels):
121.00	Frame Rate (fps):
2,464 x 2,056	Pixels (H x V):
3.45 x 3.45	Pixel Size, H x V (µm):
8.5 x 7.09	Sensing Area, H x V (mm):
Sony IMX250	Imaging Sensor:
Progressive Scan CMOS	Type of Sensor:
Global	Shutter Type:
8 bit	Pixel Depth:
Automatic, Programmable, or via External Trigger	Exposure Time:
76.46	Dynamic Range (dB):
GigE Vision v2.0	Machine Vision Standard:

Electrical

9.4 - 9.6	Power Consumption (W):
-----------	-------------------------------

Hardware & Interface Connectivity

5GigE (PoE)	Interface:
5GigE, RJ45 with Screw Locks	Connector:
Power over Ethernet (PoE) or via GPIO	Power Supply:
2 digital input, 3 digital output	GPIOs:
Hardware Trigger (GPIO), Software Trigger, Free-Run, or PTP (IEEE 1588)	Synchronization:
Back Panel	Interface Port Orientation:
10-pin Samtec	GPIO Connector Type:

Threading & Mounting

C-Mount	Mount:
1/4-20 with Tripod Mount Adapter #34-966	Mounting Threads:

Environmental & Durability Factors

Operating Temperature (°C):

-20 to +65

Storage Temperature (°C):

-40 to +80

Regulatory Compliance

Certificate of Conformance:

[View](#)

Product Details

- 5GBASE-T (5GigE) Ethernet Interface
- 3.2 to 12.4 Megapixel Sensors
- TurboDrive™ Technology for Data Transfer Speeds up to 985 MB/s
- Compact (32 x 44 x 59mm), Lightweight, and Robust Design



Teledyne
Authorized
Distributor

Teledyne DALSA Genie™ Nano 5GigE Cameras are available with a range of SONY Pregius sensors with resolutions from 3.2MP to 12.4MP. The 5GigE Ethernet interface provides data transfer speeds up to 5 times faster than the conventional GigE interface, which when combined with TurboDrive™ technology allows these cameras to achieve frame rates up to 187fps while retaining full image quality. The included Sapera CamExpert software provides a simple image acquisition interface with Sapera LT SDK libraries for OEM and system integration applications. Teledyne DALSA Genie™ Nano 5GigE Cameras are packaged in a compact, lightweight and robust all-metal housing, making them ideal for electronics inspection, industrial automation, and Intelligent Traffic Systems (ITS) applications. These cameras support the AIA GigE Vision Standard to facilitate easy integration into imaging systems.

Note: Frame rates achievable through TurboDrive™ or Burst Acquisition could vary with factors such as image quality and resolution.

Sapera LT is a free image acquisition and control software development toolkit (SDK) for Teledyne DALSA'S 1D cameras / 2D cameras / 3D Laser Profiler cameras and frame grabbers. Hardware independent in nature, Sapera LT offers a rich development ecosystem for machine vision OEMs and system integrators. Sapera LT supports image acquisition from cameras and frame grabbers based on machine vision standards including GigE Vision™, CameraLink®, CameraLink HS™, CoaXpress®, and USB3 Vision™.